

2007-08 MINNESOTA STATE HOCKEY

Table of Contents & Media Notes



Junior forward **Maggie Fisher** led the team in goals and points the last two seasons. She is second on MSU's all-time goals list.

MSU Women's Hockey

Quick Facts	IFC
Media Notes	1
Head Coach Jeff Vizenor.....	2
Assistant Coaches	3
2007-08 Outlook	4-5
Team Photo	5
Team Roster	6
Pronunciation Guide	6
Meet The Mavericks	7-23
2006-07 Schedule/Results.....	24
2006-07 Statistics.....	25
2006-07 Game Summaries.....	26-27
2007-08 Opponent Info.....	28-29
Team Awards and All-Time List	30
Team and Coach Records.....	31
Maverick Record Book	32
Key Dates in MSU Hockey History ..	33
Year-by-Year Results	34
All-Time Record vs. Opponents	35
MSU Hockey Facilities.....	36-37
Western Collegiate Hockey Association	38
WCHA Final Standings/Statistics	39
WCHA Composite Schedule	40
TV/Radio Roster	IBC
2007-08 MSU Schedule	OBC

Middle insert contains information on city of Mankato, Minnesota State University academics and athletics, MSU's national team and individual champions, MSU's North Central Conference team championships, MSU staff bios & directory and MSU facilities.

To The Media: This publication has been prepared by the MSU Athletic Communications Office for use by members of the media and friends of MSU Women's Hockey. The book is designed to supply you with the basic information needed as you follow the Mavericks through the current season. Permission is granted to quote any portion of this publication in day-to-day coverage. For more information contact:

Paul Allan

Assistant AD/Communications
Minnesota State University
175 Taylor Center
Mankato, MN 56001
Office Phone: 507-389-2625
Home Phone: 507-257-2146
E-mail: paul.allan@mnsu.edu

Credentials: Working press box credentials shall be issued only to accredited newspapers, magazines, radio and television reporters. Please make all requests for credentials in advance by phone or mail to MSU Athletic Communications. Credentials can be mailed or picked up the day of the game at All Seasons Arena.

Parking: A limited number of parking passes are available for working media and will be issued on a first-come, first-serve basis. Contact MSU Athletic Communications for availability.

Press Row: The working press row for MSU Women's Hockey is located on the west concourse level of the Midwest Wireless Civic Center and in the northwest corner of All Seasons Arena.

Interviews: Head coach Jeff Vizenor is available in his office during the week in the morning. After games, players and coaches are available upon request following a ten minute cooling off period. Arrangements should be made with an Athletic Communications staff member.

Player interviews during the week should be set up through the MSU Athletic Communications Office.

Weekly Releases: A press release and cumulative statistics will be electronically mailed every Monday during the season. Requests to be on the mailing list should be made through the MSU Athletic Communications Office. MSU's releases, statistics and other pertinent material will also be posted on the MSU Athletics Web site:

www.msumavericks.com

People with special needs who will be attending any Minnesota State University Athletics events should call 507-389-6111 24 hours in advance. This publication also available in alternative formats upon request.

Photography Area: Photographers should direct requests for credentials to the MSU Athletic Communications Office.

Keep Up With the Mavericks!

MSU Athletics currently offers several options for those who wish to keep up with what's going on with the Mavericks. Beside calling the main office at 507-389-6111, you can use the following methods to get all the scoops:

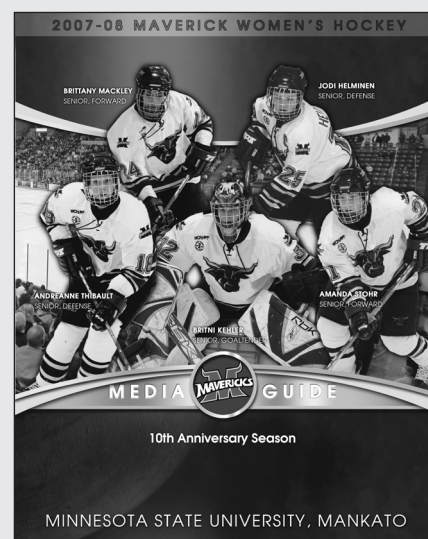
On the Web

Be sure and check out the MSU Department of Athletics Home Page on the Internet! Users can access broadcasts and receive up-to-date information on all the Maverick teams, schedules, important phone numbers, etc. Our internet address is:

www.msumavericks.com
Hot-Line

Through the cooperative efforts of the MSU Department of Athletics and Alltel Wireless, a telephone "hot-line" has been implemented for your latest MSU Athletics information. Callers receive the latest MSU men's and women's sports results and upcoming events. The Maverick Sports Hot-Line can be accessed by dialing 507-380-9785 or 800-920-9785 in state.

E-mail: paul.allan@mnsu.edu



On the Cover: Maverick seniors **Brittany Mackley, Amanda Stohr, Britni Kehler, Jodi Helminen** and **Andreanne Thibault**.
On the Back Cover: Seniors **Lindsay Macy** and **Kristina Bunker**.
Cover design by SportPiX Graphic Designer **Eric Manske**.



2007-08 MINNESOTA STATE HOCKEY

Head Coach Jeff Vizenor



Now entering his seventh season at the helm, head coach **Jeff Vizenor** has made his mark on Maverick women's hockey. When he joined the Maverick staff in 2001, he inherited a team that did not post a Western Collegiate Hockey Association victory the previous season. He led the team to a 4-26-2 mark his first season and a 10-21-3 mark his second.

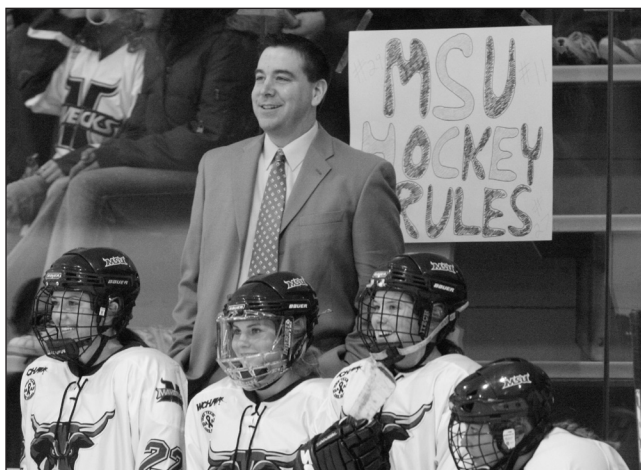
Vizenor's third campaign could be described as nothing short of a benchmark season. The Mavericks posted the first winning season in school history with a 16-14-4 overall record, including wins over top-ranked Minnesota and Minnesota Duluth, and made their first-ever appearance in the WCHA Final Five and NCAA Division I national rankings. Vizenor also mentored the program's first *Jofa Division I All-American* and *Patty Kazmaier* finalist in goaltender Shari Vogt. Following the season, he was honored by his peers with *WCHA Coach of the Year* distinction.

Last season, the Mavericks finished 16-17-2 overall and 12-14-2 in WCHA play to stand fifth. The highlight of the season was a home sweep of the University of Minnesota. The two wins capped a seven-game winning streak,

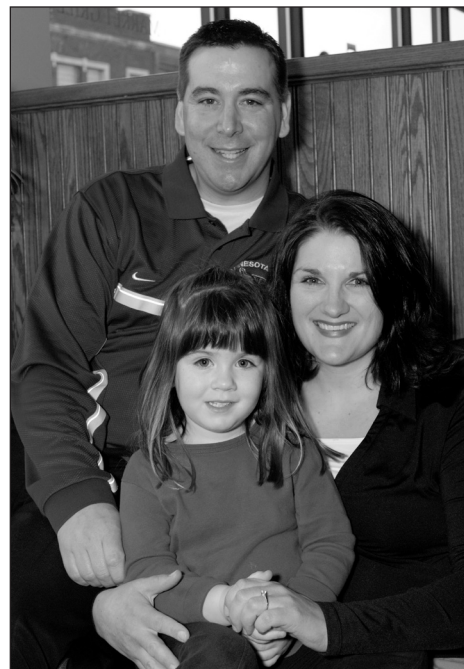
the longest in Maverick history. MSU also earned three points in a series with the University of Minnesota Duluth (5-3 win, 5-5 tie). The Mavericks had seven players earn weekly honors from the WCHA and freshman **Holly Snyder** was selected to the WCHA all-rookie team, the third Maverick to be selected to the team under Vizenor's tutelage. Heading into the 2007-08 season, he holds an overall record of 100-132-26 (.438) and 66-119-21 (.371) at MSU.

Vizenor came to Minnesota State following a one-year assignment as an assistant coach at the University of Wisconsin. The Badgers posted a 21-9-5 record and finished third in the WCHA that season. Prior to his stint in Madison, Vizenor served as the head coach at St. Mary's University on Winona, Minn., for two seasons. In that time, the Cardinals compiled a 34-13-5 mark and captured co-Minnesota Intercollegiate Athletic Conference regular-season titles both years. The 1998-99 *MIAC Coach of the Year*, Vizenor tutored nine All-MIAC players and took his 1999-00 team as high as second in the NCAA Division III national rankings.

The Rogers, Minn., native began his coaching career in 1990 as an assistant coach at St. Cloud Apollo High School in St. Cloud, Minn., serving in that capacity until 1993. From there, Vizenor completed a three-year stint as the assistant coach at Mora High School in Mora, Minn., earning *Section 2 Assistant Coach of the Year* honors in 1996. He would return to St.



Vizenor was named 2003-04 WCHA Coach of the Year.



Vizenor, his wife, Amy, and daughter, Abby.

Cloud to coach one season at St. Cloud Tech High School and another season as the head coach of the St. Cloud Icebreakers Girl's team before tackling his first collegiate assignment.

In addition to his hockey coaching experience, Vizenor helped coach girls fastpitch softball at both Mora and Apollo High Schools as well as teaching secondary social studies courses at both South Junior High in St. Cloud and at Mora.

Vizenor is very active in the national hockey community as well. He is past president of the American Women's Hockey Association and is a former member of the NCAA rules committee. Vizenor has also had coaching stints with USA Hockey, including coaching the Red Team at the 2004 USA Hockey Women's National Festival in Lake Placid, N.Y. and Burlington, Vt.

Vizenor earned his bachelor of science degree in social studies education from St. Cloud State in 1992. He and his wife, Amy, reside in Eagle Lake with their daughter, Abby.

2007-08 MINNESOTA STATE HOCKEY

Assistant Coaches & Season Outlook



Mandy Krause-Rideout Assistant Coach



A former player at Minnesota State, **Mandy Krause-Rideout** was hired as an assistant coach with the Mavericks in the summer of 2006. In addition to her on-ice duties, she serves as the team's recruiting coordinator and also directs academic

and community outreach efforts.

Before coming to MSU, Krause-Rideout served as head coach of the girls' hockey team and assisted the softball program at Fergus Falls High School. Before that, she was an assistant coach of the Midget AAA team at Athol Murray Notre Dame in Wilcox, Sask., for one season after serving as head coach of the girls' hockey program at Phillips Exeter Academy in Exeter, N.H., from 2002-04.

Krause-Rideout played in 94 games during her career at Minnesota State (1998-2002), graduating with a degree in physical education and earning Academic All-WCHA honors all four seasons.

She is currently working towards a master's degree in clinical exercise physiology. She and her husband, Scott, who serves as the team's equipment manager, reside in St. Clair.



Krause played 94 games for the Mavericks between 1998-02. She recorded 4-12-16 and earned Academic All-WCHA honors all four seasons.

Sis Paulsen Assistant Coach



Sis Paulsen comes to MSU after spending three years on the coaching staff with the women's hockey program at Bemidji State University where she coordinated its power play and penalty-killing units and worked with

the BSU defensemen.

A native of Eau Claire, Wisconsin, Paulsen was a four-year letterwinner at the University of Wisconsin as an undergraduate. A three-time captain for the Badgers, Paulsen completed her career as the all-time leading scorer among Western Collegiate Hockey Association defensemen with 42 goals and 88 assists for 130 points in 136 games. A first-team All-WCHA pick as a freshman in 1999-2000 and a second-team All-WCHA selection as a senior in 2002-03, Paulsen was named UW's *MVP* and *Defensive Player of the Year* in 2003. Paulsen graduated from Wisconsin in 2004 with a degree in human development and family studies after serving as a student assistant with the Badgers for one year.

Her duties for MSU will include recruiting, working with the defense and coordinating the penalty killing units and defensive zone systems of play.



Paulsen completed her career at Wisconsin as the all-time leading scorer among WCHA defensemen with 130 points in 136 games.

Des Christopher Volunteer Assistant Coach



Former Maverick goaltender **Des Christopher** returns for his seventh season as a mentor to the both men's and women's netminders at Minnesota State as well as handling equipment manager duties for both squads.

Christopher spent three years with the Mavericks (1995-98) and concluded his career with a 29-24-4 mark, three shutouts, a 3.49 goals against average and a .893 save percentage. The Calgary, Alta., native was MSU's team MVP and the school's Senior Male Athlete of the Year. His three assists in his senior season established a school record for goaltenders and was also a Maverick Achievement Award recipient as a senior scholar-athlete. Following his collegiate career, Christopher played professionally for two years in Germany and in Texas.

Christopher owns a master's degree in educational administration from Minnesota State. He and his wife, Liz, reside in Mankato.



Christopher spent three years (1995-98) with the Mavericks and was named the team's MVP his senior season.



2007-08 MINNESOTA STATE HOCKEY

2007-08 Outlook



Last season, sophomore **Christina Lee** was third on the team in points with 28.

Coming off a season in which the Minnesota State women's hockey team increased its win total by five games from the previous year, and including a sweep over powerhouse University of Minnesota and a three-point weekend versus Minnesota Duluth, expectations are high coming into the 2007-08 hockey season.

The Mavericks, who finished 2006-07 with a 16-17-2 record and ranked fifth in the Western Collegiate Hockey Association with a 12-14-2 record, recorded double-digit wins for the fifth time in the nine-year history of the program.

Jeff Vizenor, who is entering his seventh season as the bench boss of the Mavericks, liked what he saw last season from his squad in 2006-07.

"It was a very good season," said Vizenor. "We had a great

group of young women that accomplished things that no other Maverick team had. It was a tough end to the season with some injuries and illnesses at playoff time, but we battled and competed each night. Obviously, we had some big wins over Minnesota and UMD that people and players will remember, but I am also

very happy with how this team got along and worked together."

This year's team features a lineup consisting of seven seniors, one juniors, eight sophomores (two of which redshirted last year) and six newcomers, leaving the Mavericks with a nice balance of older and younger players to take on the rigorous schedule of the WCHA.

FORWARDS

Led by junior **Maggie Fisher**, who stood atop of last year's MSU scoring charts with 17-17--34, and senior **Lindsay Macy**, who scored 16-17--33, the Mavericks boast a nice one-two offensive

depth at forward with sophomore **Christina Lee** (15-13--28), senior **Kristina Bunker** (8-18--26), senior **Jodi Helminen** (7-12--19), senior **Amanda Stohr** (7-8--15), senior **Brittany Mackley** (2-1--3) and sophomores **Kala Buganski** (5-10--15), **Jenna Hewitt** (1-0--1) and **Ashley Young** (6-10--16) as returning frontliners.

With the wealth of experienced forwards returning, Vizenor's expectations run high.

"I would expect all the players that were at the top of our scoring charts to repeat their efforts and add to it," said the Rogers, Minn., native. "I think that **Kala Buganski**, with a year of experience and a year in the weight room, will make big gains this coming year. I also saw **Ashley Young** get better each week of the season and see her having an even better sophomore campaign."



Vizenor saw sophomore **Ashley Young** get better each week last season and expects more from her this season.

2007-08 MINNESOTA STATE HOCKEY

2007-08 Outlook and Team Photo



DEFENSEMAN

The MSU blue line will be the area that takes the biggest hit with the 378 games of experience departed with the graduation of seniors **Sammy Jo Miller**, **Megan Jedinak** and **Richelle St. Croix**. Returning defensemen include senior **Andréanne Thilbault** (1-5--6) along with sophomores **Ida Clark** (0-5-5), **Kathleen Rosso** (0-3--3) and **Holly Snyder** (0-5--5). Snyder was selected to the 2006-07 WCHA All-Rookie Team.

GOALTENDERS

Between the pipes, senior **Britni Kehler**, who played in over 95% of the action last sea-

son, is set to return for her final season as a Maverick. Posting a 2.78 goals against average last year and a .919 save percentage, Kehler will be considered one of the top-returning goaltenders in the WCHA.

Sophomore **Katerina Geertsen**, who played in three games last year is described by Vizenor as a "hard worker who has potential to see more ice time for us this year."

NEWCOMERS

Adding to the roster mix are six newcomers. **Amy Udvig** (defense, New Brighton, Minn.), **Paige Thunder** (goaltender,

Cloquet, Minn.), **Kristi Ellis** (defense, Rodgers, Minn.) and **Ashley Bliskowski** (defense, St. Francis, Minn.), **Lisa Edman** (forward, Ornskoldsvik, Sweden) and **Nina Tikkinen** (forward, Salo, Finland).

Vizenor is confident that the incoming freshman can make a positive impact on this coming season.

"We will have some young defensemen that will need to learn the ropes of playing the game at the NCAA Division I level, but we are confident in all our freshman to make positive contributions both on and off the ice."



Top Row (From Left to Right): Kristi Ellis, Amy Udvig, Ida Clark, Ashley Bliskowski, Kathleen Rosso, Christina Lee, Jenna Hewitt, Ashley Young.

Middle Row (From Left to Right): Assistant Coach Sis Paulsen, Assistant Coach Mandy Krause-Rideout, Nina Tikkinen, Kala Bugganski, Lisa Edman, Holly Snyder, Maggie Fisher, Athletic Trainer Lindsey Toman, Head Coach Jeff Vizenor.

Front Row (From Left to Right): Paige Thunder, Jodi Helminen, Brittany Mackley, Andreanne Thibault, Britni Kehler, Kristina Bunker, Amanda Stohr, Lindsay Macy, Katerina Geertsen.



2007-08 MINNESOTA STATE HOCKEY

Maverick Team Roster

2007-08 Minnesota State University Mavericks Numerical Roster

No.	Name	Yr.	Pos.	Height	S/C	Birthdate	Hometown/Last Team
4	Amy Udvig	Fr.	D	5-3	L	09/11/1988	New Brighton, Minn./Irondale
5	Ashley Bliskowski	Fr.	D	5-5	R	02/27/1989	St. Francis, Minn./St. Francis
7	Kala Buganski	So.	F	5-9	L	06/27/1988	Andover, Minn./Anoka
8	Nina Tikkinen	Fr.	F	5-6	L	02/06/1987	Salo, Finland/Karpat Oulu
10	Christina Lee	So.	F	5-3	R	02/25/1988	Maple Plain, Minn./Wayzata
13	Ida Clark	So.	D	5-3	L	03/28/1986	Vallentuna, Sweden/MB Hockey
14	Maggie Fisher	Jr.	F	5-5	R	12/26/1986	South Saint Paul, Minn./South Saint Paul
15	Ashley Young	So.-R	F	5-3	L	06/22/1987	South Saint Paul, Minn./South Saint Paul
17	Jenna Hewitt	So.-R	F	5-4	R	09/14/1986	Ramsey, Minn./Anoka
18	Andréanne Thibault	Sr.	D	5-11	L	02/18/1986	L'Original, Ont./Ottawa Raiders
19	Lisa Edman	Fr.	F	5-5	L	04/14/1987	Ornskoldsvik, Sweden/Modo
20	Lindsay Macy	Sr.	F	5-11	R	03/22/1985	Ellendale, Minn./NHREG/Wisconsin
21	Amanda Stohr	Sr.	F	5-5	R	12/27/1985	South Saint Paul, Minn./South Saint Paul
22	Kristina Bunker	Sr.	F	5-6	L	10/28/1985	Blaine, Minn./Blaine
23	Kathleen Rosso	So.	D	5-5	R	10/19/1987	Rogers, Minn./Buffalo
24	Brittany Mackley	Sr.	F	5-10	R	06/04/1986	Burnsville, Minn./Burnsville
25	Jodi Helminen	Sr.	F	5-4	L	09/18/1986	Brighton, Mich./Honeybaked U-19
28	Holly Snyder	So.	D	5-7	R	05/15/1987	Kenosha, Wis./Kenosha/U-19 Team Wisconsin
32	Britni Kehler	Sr.	G	5-6	L	07/23/1986	Mitchell, Man./Team Manitoba
35	Katerina Geertsen	So.	G	5-11	L	09/19/1988	Rock Rapids, Alberta/Warner School
37	Kristi Ellis	Fr.	D	5-5	R	02/27/1989	Rogers, Minn./Elk River
39	Paige Thunder	Fr.	G	5-9	L	04/04/1989	Cloquet, Minn./Cloquet

Head Coach: Jeff Vizenor (St. Cloud State '92)

Assistant Coaches: Mandy Krause-Rideout (Minnesota State '02), Sis Paulsen (Wisconsin '04)

Volunteer Goaltending Coach: Des Christopher (Minnesota State '98)

2007-08 Minnesota State University Mavericks Alphabetical Roster

No.	Name	Yr.	Pos.	Height	S/C	Birthdate	Hometown/Last Team
5	Ashley Bliskowski	Fr.	D	5-5	R	02/27/1989	St. Francis, Minn./St. Francis
7	Kala Buganski	So.	F	5-9	L	06/27/1988	Andover, Minn./Anoka
22	Kristina Bunker	Sr.	F	5-6	L	10/28/1985	Blaine, Minn./Blaine
13	Ida Clark	So.	D	5-3	L	03/28/1986	Vallentuna, Sweden/MB Hockey
19	Lisa Edman	Fr.	F	5-6	L	04/14/1987	Ornskoldsvik, Sweden/Modo
37	Kristi Ellis	Fr.	D	5-5	R	02/27/1989	Rogers, Minn./Elk River
14	Maggie Fisher	Jr.	F	5-5	R	12/26/1986	South Saint Paul, Minn./South Saint Paul
35	Katerina Geertsen	So.	G	5-11	L	09/19/1988	Rock Rapids, Alberta/Warner School
25	Jodi Helminen	Sr.	F	5-4	L	09/18/1986	Brighton, Mich./Honeybaked U-19
17	Jenna Hewitt	So.-R	F	5-4	R	09/14/1986	Ramsey, Minn./Anoka
32	Britni Kehler	Sr.	G	5-6	L	07/23/1986	Mitchell, Man./Team Manitoba
10	Christina Lee	So.	F	5-3	R	02/25/1988	Maple Plain, Minn./Wayzata
24	Brittany Mackley	Sr.	F	5-10	R	06/04/1986	Burnsville, Minn./Burnsville
20	Lindsay Macy	Sr.	F	5-11	R	03/22/1985	Ellendale, Minn./NHREG/Wisconsin
23	Kathleen Rosso	So.	D	5-5	R	10/19/1987	Rogers, Minn./Buffalo
21	Amanda Stohr	Sr.	F	5-5	R	12/27/1985	South Saint Paul, Minn./South Saint Paul
28	Holly Snyder	So.	D	5-7	R	05/15/1987	Kenosha, Wis./Kenosha/U-19 Team Wisconsin
18	Andréanne Thibault	Sr.	D	5-11	L	02/18/1986	L'Original, Ont./Ottawa Raiders
39	Paige Thunder	Fr.	G	5-9	L	04/04/1989	Cloquet, Minn./Cloquet
8	Nina Tikkinen	Fr.	F	5-6	L	02/06/1987	Salo, Finland/Karpat Oulu
4	Amy Udvig	Fr.	D	5-6	L	09/11/1988	New Brighton, Minn./Irondale
15	Ashley Young	So.-R	F	5-3	L	06/22/1987	South Saint Paul, Minn./South Saint Paul

Roster Breakdown: 22 Players

By Position: Goaltenders – 3 (Geertsen, Kehler, Thunder). Defense – 7 (Bliskowski, Clark, Ellis, Rosso, Snyder, Thibault, Udvig). Forwards – 12 (Buganski, Bunker, Edman, Fisher, Helminen, Hewitt, Lee, Mackley, Macy, Stohr, Tikkinen, Young).

By Year: Seniors – 7 (Bunker, Helminen, Kehler, Macy, Mackley, Stohr, Thibault). Juniors – 1 (Fisher).

Sophomores – 8 (Buganski, Clark, Geertsen, Hewitt, Lee, Rosso, Snyder, Young). **Freshman** – 6 - Bliskowski, Edman, Ellis, Thunder, Tikkinen, Udvig.

By State/Province: Minnesota – 14 (Bliskowski, Buganski, Bunker, Ellis, Fisher, Hewitt, Lee, Mackley, Macy, Stohr, Thunder, Udvig, Rosso, Young). Finland - 1 (Tikkinen). Manitoba – 1 (Kehler). Ontario – 1 (Thibault).

Alberta – 1 (Geertsen). Michigan – 1 (Helminen). Sweden – 2 (Clark, Edman). Wisconsin – 1 (Snyder).

Pronunciation Guide

Ashley Bliskowski bli-SKOW-ski
 Kala Buganski KAY-la Buh-GAN-skee
 Ida Clark EE-da
 Katerina Geertsen Ka-TREE-na GERT-sen
 Jodi Helminen HELL-min-en
 Britni Kehler KAY-ler
 Lindsay Macy MAY-see
 Kathleen Rosso ROSS-oh
 Amanda Stohr Store
 Andréanne Thibault On-DREE-on TEE-bo
 Nina Tikkinen TEE-kuh-nihn
 Amy Udvig UHD-vig

Jeff Vizenor VIZ-nuhr
 Mandy Krause-Rideout Krowse

2007-08 MINNESOTA STATE HOCKEY

Meet The Mavericks



#22 Kristina Bunker

5-6 • Senior • Forward • Blaine, Minn. • Blaine H.S. • Shoots left • DOB: 10/28/85



ASA MAVERICK: Last Season: One of nine Mavericks to play in all 35 games...Led the team in assists with 18 and ranked 19th in the WCHA...Ranked third on the team in shots (120)...Fourth on the team in points (26)...Tallied three power play goals...Assisted four goals in the 7-1 win over Vermont (12/31) which tied a team record for assists in a game...One of 12 Mavericks named to the *2006-07 WCHA All-Academic Team*. **2005-06:** One of eight players that saw action in all 36 games...Ranked third on the team in goals, scoring eight times...Had eight assists to tie for third-best on the team...Her 99 shots on net and 16 points both ranked second on the team...Scored two goals in a 5-2 win over Bemidji State (1/21), and turned in a two-point effort in a 2-0 win over St. Cloud State (11/19), tallying one goal and one assist. **2004-05:** Owned a share of the team scoring lead with 19 points in maiden season...Led the squad with 15 assists...Lone Maverick rookie to see action in all 35 games...Rattled off a seven-game point-scoring streak from Nov. 5-27, scoring 2-7--9 in the process...Earned first career assist in shutout of St. Cloud State to start the streak...First goal came in win over Bemidji State (11/13)...Had six multi-point games to lead the team...Mavericks went 5-1-0 in those games...Named *WCHA Rookie of the Week* for 1-3--4 series in sweep of Bemidji State (11/15)...Netted first career game-winner against St. Cloud State (1/7)...Point total was good for a share of fourth on the WCHA rookie charts.

THE BUNKER FILE: Six-year hockey letterwinner for the Blaine Bengals...All-time leading scorer at BHS with 325 career points...Led team to a 19-9 record during senior season...Two-time All-Metro selection and four-time all-state honoree...Named to five All-Northwest Suburban Conference teams...In freshman season, led team to a 25-1-3 record and runner-up finish at the Minnesota state tournament...Full name is Kristina Joan Bunker...Daughter of Harland and Kay Bunker...Born Oct. 28, 1985...Majoring in corrections.

BUNKER SEASON-BY-SEASON

Kristina Bunker, Sr., Forward, Blaine, Minn.

Year	GP	G	A	Pts	P	PM	PPG	SHG	GWG
2004-05	35	4	15	19	19	38	0	0	1
2005-06	36	8	8	16	17	34	3	0	1
2006-07	35	8	18	26	19	49	3	0	0
Career	106	20	41	61	55	121	6	0	2

Single-Game Highs

Goals: 2
vs. Bemidji State
(01/21/06)

Assists: 4
vs. Vermont
(12/31/06)

Points: 4
vs. Vermont
(12/31/06) (4A)

Bunker Game-By-Game 2006-07

Date	Opponent	Score	G-A-Pts
10/1	Robert Morris	6-0	0-0-0
10/6	UMD	1-3	0-0-0
10/7	UMD	1-6	1-0-1
10/13	Minn	1-4	0-0-0
10/14	Minn	2-5	0-1-1
10/21	UND	7-0	1-1-2
10/22	UND	3-0	0-2-2
11/3	UW	1-3	0-0-0
11/4	UW	1-6	0-0-0
11/10	Wayne State	6-1	0-0-0
11/11	Wayne State	3-7	1-0-1
11/17	UMD	5-5	0-1-1
11/18	UMD	5-3	0-1-1
11/24	OSU	1-2	0-0-0
11/25	OSU	3-4	1-0-1
12/1	SCSU	3-2	1-0-1
12/2	SCSU	2-3	0-0-0
12/8	BSU	2-5	0-0-0
12/9	BSU	5-1	0-3-3
12/30	Vermont	4-0	0-1-1
12/31	Vermont	7-1	0-4-4
1/6	UND	4-2	0-0-0
1/7	UND	4-2	0-0-0
1/19	MINN	3-2	0-0-0
1/20	MINN	4-3	0-1-1
1/26	UW	0-5	0-0-0
1/27	UW	0-8	0-0-0
2/2	BSU	4-1	0-0-0
2/3	BSU	3-3	0-0-0
2/9	SCSU	4-3	0-1-1
2/10	SCSU	2-0	0-0-0
2/16	OSU	3-4	1-1-2
2/17	OSU	4-6	1-1-2
2/23	OSU	0-1	0-0-0
2/24	OSU	4-5	1-0-1



Bunker Facts

- ✓ Accumulated 20-41--61 in 106 games during her MSU career.
- ✓ Ranks first on MSU's all-time career assists list. Second on the points list.
- ✓ Three power play goals last season.
- ✓ Two-time *WCHA All-Academic* selection.
- ✓ Lists spending time with family, traveling and reading as favorite things to do outside of hockey.



2007-08 MINNESOTA STATE HOCKEY

Meet The Mavericks

#25 Jodi Helminen

5-4 • Senior • Defense • Brighton, Mich. • Honeybaked U-19 • Shoots left • DOB: 09/18/1986



AS A MAVERICK: Last Season: Ranked seventh on MSU's scoring charts with 7-12--19...Established career-highs for goals, assists and points...Accumulated 3-2--5 in the last six games of the season...One of 12 Mavericks named to the 2006-07 WCHA All-Academic Team. **2005-06:** Led the Mavericks with 10 assists and added three goals while playing in all 36 games...Tied for fifth on the team in total points (13) and finished sixth on the team in shots on goal (65)...Netted one goal and added an assist to help preserve a 3-3 tie against Minnesota Duluth (2/24). **2004-05:** Ranked fourth on the team among newcomers and sixth overall with eight points...Went 3-5--8 in 30 games played...Saw action in 25 consecutive games to close the season...First career points came in back-to-back games against North Dakota (12/4-5)...Tallied a goal in the first game of the series and added an assist in the finale...Assisted on the game-winning goal against Vermont (1/3)...Netted first career game-winner and added an assist in first multi-point game against St. Cloud State (1/8)...Registered 30 shots on the season.

THE HELMINEN FILE: Compiled 33 goals and 35 assists for 68 points competing for the Honeybaked Under-19...Led the team to the state championship and a third-place national finish in 2002-03...Brother Lars was a stand-out defenseman for Michigan Tech...Brother Dwight signed with the New York Rangers after a standout career at Michigan...Full name is Jodi Elaine Helminen...Daughter of Karl and Eva Helminen...Born Sept. 18, 1986...Majoring in interior design.

HELMINEN SEASON-BY-SEASON

Jodi Helminen, Sr., Forward, Brighton, Mich.										
Year	GP	G	A	Pts	P	PM	PPG	SHG	GWG	
2004-05	30	3	5	8	6	12	0	0	1	
2005-06	36	3	10	13	19	38	1	0	0	
2006-07	33	7	12	19	9	18	2	0	1	
Career	99	13	27	40	34	68	3	0	2	

Single-Game Highs

Goals: 1, 13 times
last time vs. Ohio State
(02/16/07)

Assists: 2, four times
last time vs. North Dakota
(01/06/07)

Points: 3
vs. North Dakota
(01/06/07) (1G, 2A)

Helminen Game-By-Game 2006-07

Date	Opponent	Score	G-A-Pts
10/1	Robert Morris	6-0	0-0-0
10/6	UMD	1-3	0-1-1
10/7	UMD	1-6	0-0-0
10/13	Minn	1-4	0-0-0
10/14	Minn	2-5	0-0-0
10/21	UND	7-0	0-2-2
10/22	UND	3-0	0-0-0
11/3	UW	1-3	0-0-0
11/4	UW	1-6	0-1-1
11/10	Wayne State	6-1	1-1-2
11/11	Wayne State	3-7	0-0-0
11/17	UMD	5-5	0-1-1
11/18	UMD	5-3	1-0-1
11/24	OSU	1-2	0-0-0
11/25	OSU	3-4	0-0-0
12/1	SCSU	3-2	0-0-0
12/2	SCSU	2-3	0-0-0
12/8	BSU	2-5	0-0-0
12/9	BSU	5-1	0-1-1
12/30	Vermont	4-0	0-0-0
12/31	Vermont	7-1	0-1-1
1/6	UND	4-2	1-2-3
1/7	UND	4-2	0-0-0
1/19	MINN	3-2	0-0-0
1/20	MINN	4-3	1-0-1
1/26	UW	0-5	0-0-0
1/27	UW	0-8	0-0-0
2/2	BSU	4-1	DNP
2/3	BSU	3-3	DNP
2/9	SCSU	4-3	1-1-2
2/10	SCSU	2-0	1-0-1
2/16	OSU	3-4	1-0-1
2/17	OSU	4-6	0-0-0
2/23	OSU	0-1	0-0-0
2/24	OSU	4-5	0-1-1



Helminen Facts

✓ Assistant Captain for 2007-08 campaign.

✓ Recorded one goal and two assists in a 4-2 victory over North Dakota (1/6/07).

✓ Established career-high in goals (7), assists (12) and points (19) last season.

✓ Voted team MVP for the 2005-06 season.

✓ Enjoys traveling and being with friends when not playing hockey.

2007-08 MINNESOTA STATE HOCKEY

Meet The Mavericks



#32 Britni Kehler

5-6 • Senior • Goaltender • Mitchell, Man. • Canadian U-22 • Catches left • DOB: 07/23/1986



AS A MAVERICK: Last season: Started 33 of the 35 games...Went 16-15-2 with a save percentage of .919...Broke MSU's single season records in wins (16), shutouts (5), saves (1,064), shots faced (1,158), and minutes (2028:33)...Named *WCHA Defensive Player of the Week* three times (10/24, 11/21, 2/13)...Established a career-high in shots faced (51) and saves (46) in a 6-1 loss to Wisconsin on Nov. 11, 2006...One of the 12 Mavericks named to the 2006-07 *WCHA All-Academic Team*. **2005-06:** Played in 25 games and positioned herself among the top-five in Maverick all-time single-season categories for saves, save percentage, and goals against average...Had 754 saves on the season to rank fourth best all-time, a .923 save percentage to rank second all-time, and a 2.50 GAA to also rank second all-time...Her 10 wins is also second-highest all-time among goaltenders in a season...Posted four shutouts, including back-to-back shutouts against St. Cloud State (11/18-19), and made a season-high 45 saves against Minnesota Duluth (2/24) to ensure a 3-3 tie. **2004-05:** Played 16 games of maiden season, logging 963 minutes...Led the team with six wins and three shutouts...Ranks second on all-time team charts for shutouts in a season...Overall record was 6-9-1...Recorded 463 saves on the season, stopping 30 or more in a game six times...Stopped all 29 shots faced to shut out St. Cloud State, earning *WCHA Rookie of the Week* laurels for her efforts (11/5)...Turned aside 24 more to earn slim 1-0 win over Vermont (1/3)...Final shutout came against North Dakota on 24 shots (1/15)...Established a personal best with 44 saves in loss to top-ranked Minnesota (2/19)...Stopped 41 shots the following game to earn 3-2 win over Ohio State (2/26).

THE KEHLER FILE: Selected to Canadian Under-22 team...Saw action in one game of exhibition series against the U.S. Under-22 squad in Lake Placid, N.Y., and Burlington, Vt....Represented Team Manitoba at the 2003 Canada Winter Games...Full name is Britni Griffith Kehler...Daughter of Jason and Kim Kehler...Born July 23, 1986...Majoring in corrections with a minor in law enforcement.

KEHLER SEASON-BY-SEASON

Year	GS	GP	MP	W	L	T	SOG	Svs	Sv%	GA	GAA	SO	Assists
2004-05	16	16	963:37	6	9	1	509	463	.910	46	2.86	3	1
2005-06	25	25	1514:37	10	12	3	817	754	.923	63	2.50	4	0
2006-07	33	34	2028:33	16	15	2	1158	1064	.919	94	2.78	5	0
Career	74	75	4506:47	32	36	6	2484	2281	.918	203	2.70	12	1

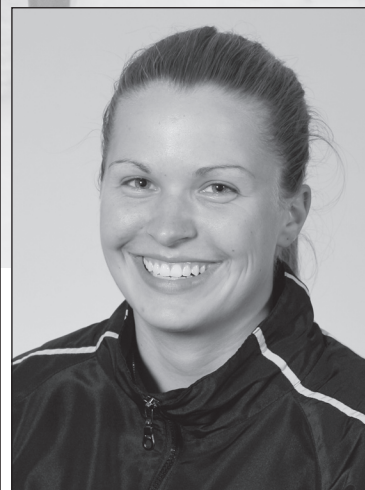
Single-Game Highs

Shots: 51
vs. Wisconsin
(11/4/06)

Saves: 46
vs. Wisconsin
(11/4/06)

Kehler Game-By-Game 2006-07

Date	Opponent	Score	Shots/Saves
10/1	Robert Morris	6-0	20/20
10/6	UMD	1-3	31/28
10/7	UMD	1-6	49/43
10/13	Minn	1-4	38/34
10/14	Minn	2-5	35/30
10/21	UND	7-0	29/29
10/22	UND	3-0	23/23
11/3	UW	1-3	32/29
11/4	UW	1-6	51/46
11/10	Wayne State	6-1	26/25
11/11	Wayne State	3-7	13/11
11/17	UMD	5-5	44/39
11/18	UMD	5-3	45/42
11/24	OSU	1-2	26/24
11/25	OSU	3-4	42/38
12/1	SCSU	3-2	45/43
12/2	SCSU	2-3	32/29
12/8	BSU	2-5	27/22
12/9	BSU	5-1	29/28
12/30	Vermont	4-0	13/13
12/31	Vermont	7-1	23/22
1/6	UND	4-2	30/28
1/7	UND	4-2	36/34
1/19	MINN	3-2	42/40
1/20	MINN	4-3	39/36
1/26	UW	0-5	40/35
1/27	UW	0-8	48/40
2/2	BSU	4-1	27/26
2/3	BSU	3-3	42/39
2/9	SCSU	4-3	26/23
2/10	SCSU	2-0	30/30
2/16	OSU	3-4	43/39
2/17	OSU	4-6	DNP
2/23	OSU	0-1	35/34
2/24	OSU	4-5	47/42



Kehler Facts

- ✓ Awarded Team Most Valuable Player and Buffalo Wild Wings Star of the Year.
- ✓ Holds MSU's all-time record for career wins (32), save percentage (.918) and goals against average (2.70).
- ✓ Logged 4,506:47 between the pipes.
- ✓ Recorded an assist on senior Jodi Helminen's goal, Dec. 4, 2004 vs. UND.
- ✓ Favorite athlete is Sidney Crosby.



2007-08 MINNESOTA STATE HOCKEY

Meet The Mavericks

#24 Brittany Mackley

5-10 • Senior • Forward • Burnsville, Minn. • Burnsville H.S. • Shoots right • DOB: 06/04/1986



AS A MAVERICK: Last Season: One of nine Mavericks to play in all 35 games...Accumulated 2-1--3 in 35 games...Her two goals contributed to a 7-0 win over North Dakota (10/21) and a 4-0 win over Vermont (12/30)...Earned assist in loss to BSU Dec. 8. **2005-06:** Saw ice time in 35 games and tallied 40 shots on goal...Finished with three goals and two assists, registering one goal apiece in wins over Ohio State (10/29) and Wayne State (11/12), and also scoring the Mavericks' lone goal against Wisconsin (11/9). **2004-05:** Saw action in 31 games of maiden season...Tallied first career point with an assist in 2-2 tie with Connecticut (11/20)...Registered seven shots on the season...Spent just four minutes in the penalty box, second fewest among all skaters.

THE MACKLEY FILE: Lettered and started four seasons for Burnsville High School...A two-time All-Lake Conference selection...Led team to section championship and third-place state finish as a sophomore...Led team in scoring as a senior...Also participated in soccer and golf for the Blaze...Full name is Brittany Ann Mackley...Daughter of Clarence and Icy Mackley...Born June 4, 1986...Studying international business.

MACKLEY SEASON-BY-SEASON

Brittany Mackley, Sr., Forward, Burnsville, Minn.

Year	GP	G	A	Pts	P	PM	PPG	SHG	GWG
2004-05	31	0	1	1	2	4	0	0	0
2005-06	35	3	3	6	4	8	1	0	0
2006-07	35	2	1	3	5	21	0	0	0
Career	101	5	5	10	11	33	1	0	0

Single-Game Highs

Goals: 1, five times
last time vs. Vermont
(12/30/06)

Assists: 1, five times
last time vs. Bemidji State
(12/08/06)

Points: 1, ten times
last time vs. Vermont
(12/30/06) (1G)

Mackley Game-By-Game 2006-07

Date	Opponent	Score	G-A-Pts
10/1	Robert Morris	6-0	0-0-0
10/6	UMD	1-3	0-0-0
10/7	UMD	1-6	0-0-0
10/13	Minn	1-4	0-0-0
10/14	Minn	2-5	0-0-0
10/21	UND	7-0	1-0-1
10/22	UND	3-0	0-0-0
11/3	UW	1-3	0-0-0
11/4	UW	1-6	0-0-0
11/10	Wayne State	6-1	0-0-0
11/11	Wayne State	3-7	0-0-0
11/17	UMD	5-5	0-0-0
11/18	UMD	5-3	0-0-0
11/24	OSU	1-2	0-0-0
11/25	OSU	3-4	0-0-0
12/1	SCSU	3-2	0-0-0
12/2	SCSU	2-3	0-0-0
12/8	BSU	2-5	0-1-1
12/9	BSU	5-1	0-0-0
12/30	Vermont	4-0	1-0-1
12/31	Vermont	7-1	0-0-0
1/6	UND	4-2	0-0-0
1/7	UND	4-2	0-0-0
1/19	MINN	3-2	0-0-0
1/20	MINN	4-3	0-0-0
1/26	UW	0-5	0-0-0
1/27	UW	0-8	0-0-0
2/2	BSU	4-1	0-0-0
2/3	BSU	3-3	0-0-0
2/9	SCSU	4-3	0-0-0
2/10	SCSU	2-0	0-0-0
2/16	OSU	3-4	0-0-0
2/17	OSU	4-6	0-0-0
2/23	OSU	0-1	0-0-0
2/24	OSU	4-5	0-0-0



Mackley Facts

✓ Assistant Captain for 2007-08 campaign.

✓ Recorded a .154 shot percentage last season which was fourth on the team.

✓ Voted Most Improved by her teammates for the 2005-06 season.

✓ Scored a power play goal in a 7-1 loss to Wisconsin on Nov. 9, 2005.

✓ Lists freshman forward Lisa Edman as favorite athlete.

2007-08 MINNESOTA STATE HOCKEY

Meet The Mavericks



#20 Lindsay Macy

5-11 • Senior • Forward • Owatonna, Minn. • Wisconsin • Shoots right • DOB: 03/22/1985



AS A MAVERICK: Last Season: Fired 148 shots to lead the team...Ranked second on the team and T-18th in WCHA in points (33)...Second on the team and T-11th in WCHA in goals (16)...Tied for second on the team in assists (17)...Four shorthanded points put her in a tie for first in the WCHA...Played in 34 of the 35 games...Named *WCHA Offensive Player of the Week* and *USCHO.com Player of the Week* after scoring twice and adding two assists in a 6-0 win over Robert Morris (10/1)...One of 12 Mavericks named to the 2006-07 *WCHA All-Academic Team*. **2005-06:** Redshirted at Minnesota State after transferring from the University of Wisconsin where she played two seasons. **Pre-MSU 2004-05:** Tallied 19 goals in 32 games played and registered 42 points, ranking second on Wisconsin in both categories...Also tied for second in power-play goals scored (6), ranked third on the team in assists (23) and fourth on the team in shot percentage (.167). **2003-04:** Ranked first on the team with 18 goals in 33 games played for the Badgers...Fired a team-high 121 shots and finished second on the team in points (31) and shot percentage (.149)...her 13 assists ranked fifth best on the squad...Tied for second on the team with three power-play goals.

THE MACY FILE: Four-year starter and letterwinner at the center position, totaling 355 points during prep career at Owatonna High School...Nominated to Ms. Hockey top-10 list and named to the all-tournament team at state as a senior...Also recognized as the all-Big Nine conference MVP, most dedicated and senior female athlete of the year her final season...Three-time all-state selection, additionally being named to the Pioneer Press all-state team while posting 100 points or more each of her final three seasons...Full name is Lindsay Nicole Macy...Daughter of Don and Menta Macy...Born March 22, 1985...majoring in sports management.

MACY SEASON-BY-SEASON

Lindsay Macy, Sr., Forward, Owatonna, Minn.									
Year	GP	G	A	Pts	P	PM	PPG	SHG	GWG
2006-07	34	16	17	33	34	87	3	2	1
Career	34	16	17	33	34	87	3	2	1

Single-Game Highs

Goals: 2, four times
last time vs. Minnesota Duluth (11/18/06)
Assists: 3
vs. Vermont (12/31/06)
Points: 4, twice
last time vs. Vermont (12/31/06) (IG, 3A)

Macy Game-By-Game 2006-07

Date	Opponent	Score	G-A-Pts
10/1	Robert Morris	6-0	2-0-4
10/6	UMD	1-3	0-0-0
10/7	UMD	1-6	0-0-0
10/13	Minn	1-4	0-0-0
10/14	Minn	2-5	0-0-0
10/21	UND	7-0	1-1-2
10/22	UND	3-0	0-1-1
11/3	UW	1-3	0-0-0
11/4	UW	1-6	0-0-0
11/10	Wayne State	6-1	1-2-3
11/11	Wayne State	3-7	2-0-2
11/17	UMD	5-5	2-0-2
11/18	UMD	5-3	2-0-2
11/24	OSU	1-2	0-0-0
11/25	OSU	3-4	0-1-1
12/1	SCSU	3-2	0-1-1
12/2	SCSU	2-3	0-0-0
12/8	BSU	2-5	0-1-1
12/9	BSU	5-1	0-1-1
12/30	Vermont	4-0	1-0-1
12/31	Vermont	7-1	1-3-4
1/6	UND	4-2	0-0-0
1/7	UND	4-2	1-1-2
1/19	MINN	3-2	DNP
1/20	MINN	4-3	0-1-1
1/26	UW	0-5	0-0-0
1/27	UW	0-8	0-0-0
2/2	BSU	4-1	0-1-1
2/3	BSU	3-3	0-0-0
2/9	SCSU	4-3	1-0-1
2/10	SCSU	2-0	0-0-0
2/16	OSU	3-4	1-1-2
2/17	OSU	4-6	0-0-0
2/23	OSU	0-1	0-0-0
2/24	OSU	4-5	1-0-1



Macy Facts

✓ Her 148 shots in 2006-07 is a MSU single-season record.

✓ +7 on the season ranked her second on the team.

✓ Recorded nine multi-point games.

✓ Tallied four points twice, Robert Morris (10/1/06) and Vermont (12/31/06)

✓ Favorite cartoons are the Smurfs and the Jetsons.



2007-08 MINNESOTA STATE HOCKEY

Meet The Mavericks

#21 Amanda Stohr

5-5 • Senior • Forward • South Saint Paul, Minn. • South Saint Paul H.S. • Shoots right • DOB: 12/27/1985



AS A MAVERICK: Last Season: Tallied 7-8--15 in 30 games before an injury ended her season five games early...Named *WCHA Offensive Player of the Week* after a four-point weekend (3G, 1A) in a split with Bemidji State Dec. 8-9...Led the team (tied for second in WCHA) with three shorthanded goals, totaling four for her career...Scored a shorthanded, game-winning goal in the 5-1 win over BSU Dec. 9...One of 12 Mavericks named to the 2006-07 *WCHA All-Academic Team*. **2005-06:** Saw action in 33 games for the Mavericks...Ranked second on the team with nine assists and finished tied for fourth with six goals...Her 15 points were third-most on the team...Scored one goal and posted two assists in a 5-2 win over Bemidji State (1/21) and turned in two-point efforts against North Dakota (10/15) and Providence (1/15)...put 86 shots on goal to rank fourth on the team. **2004-05:** Shared the team scoring lead with 19 points while leading the squad outright with 10 goals...Was also tops on the team with four power-play goals and one short-handed goal...Saw action in 34 of 35 possible games...Earned an assist in first collegiate game against Ohio State (10/15)...Netted first career goal on the power-play in the next series, a 3-3 tie with Minnesota Duluth (10/23)...Established a team high for the season as well as a personal best with a four-point effort against St. Cloud State (1/7)...Had a hand in all four MSU goals with a power-play and short-handed goal and two assists...Earned *WCHA Rookie of the Week* honors for her performance...Scored first career game-winning goal in final regular-season game against Ohio State (2/26)...Owned a six game point-scoring streak from Nov. 5-27, scoring eight points...Finished the season tied for fourth in the WCHA in rookie scoring.

THE STOHR FILE: Member of a Packer team that established a Minnesota high school record with 86 consecutive games without a loss...Squad won state championship junior and sophomore seasons...Led team to a 114-9-1 record over four-year prep career, including a 56-0 mark in Classic Suburban Conference play...Compiled a career ledger of 110-132--242...Four-time all-conference selection...Capped prep career with *Star-Tribune* All-Metro, *Pioneer Press* All-State, *Associated Press* All-State and *Minnesota Coaches Association* All-State Honorable Mention honors...A finalist for *Ms. Hockey*, the top honor for high school players in Minnesota...Full name is Amanda Elizabeth Stohr...Daughter of Phillip and Mary Ellen Stohr...Born Dec. 27, 1985...A sports management major.

STOHR SEASON-BY-SEASON

Amanda Stohr, Sr., Forward, South Saint Paul, Minn.

Year	GP	G	A	Pts	P	PM	PPG	SHG	GWG
2004-05	34	10	9	19	22	44	4	1	1
2005-06	33	6	9	15	13	26	1	0	2
2006-07	30	7	8	15	10	20	0	3	2
Career	97	23	26	49	45	90	5	4	5

Single-Game Highs

Goals: 2, twice
last time vs. Bemidji
(12/08/06)

Assists: 2, five times
last time vs. Minnesota Duluth
(11/17/06)

Points: 4
vs. St. Cloud
(01/07/05) (2G, 2A)

Stohr Game-By-Game 2006-07

Date	Opponent	Score	G-A-Pts
10/1	Robert Morris	6-0	0-2-2
10/6	UMD	1-3	0-0-0
10/7	UMD	1-6	0-0-0
10/13	Minn	1-4	0-0-0
10/14	Minn	2-5	1-0-1
10/21	UND	7-0	0-0-0
10/22	UND	3-0	0-0-0
11/3	UW	1-3	0-0-0
11/4	UW	1-6	0-0-0
11/10	Wayne State	6-1	0-0-0
11/11	Wayne State	3-7	0-0-0
11/17	UMD	5-5	0-2-2
11/18	UMD	5-3	0-1-1
11/24	OSU	1-2	0-0-0
11/25	OSU	3-4	0-0-0
12/1	SCSU	3-2	1-0-1
12/2	SCSU	2-3	1-0-1
12/8	BSU	2-5	2-0-2
12/9	BSU	5-1	1-1-2
12/30	Vermont	4-0	0-0-0
12/31	Vermont	7-1	1-0-1
1/6	UND	4-2	0-0-0
1/7	UND	4-2	0-0-0
1/19	MINN	3-2	0-1-1
1/20	MINN	4-3	0-0-0
1/26	UW	0-5	0-0-0
1/27	UW	0-8	0-0-0
2/2	BSU	4-1	0-0-0
2/3	BSU	3-3	0-0-0
2/9	SCSU	4-3	0-1-1
2/10	SCSU	2-0	DNP
2/16	OSU	3-4	DNP
2/17	OSU	4-6	DNP
2/23	OSU	0-1	DNP
2/24	OSU	4-5	DNP



Stohr Facts

- ✓ Captain for the 2007-08 campaign.
- ✓ Second on MSU's all-time game-winning goals list with five.
- ✓ Played at South Saint Paul High School with teammates **Maggie Fisher** and **Ashley Young**.
- ✓ Tallied four points in a 4-2 win over St. Cloud on Jan. 7, 2005.
- ✓ Lists the Minnesota Wild as favorite sports team.

2007-08 MINNESOTA STATE HOCKEY

Meet The Mavericks



#18 Andréanne Thibault

5-11 • Senior • Defense • L'Original, Ont. • Ottawa Raiders • Shoots left • DOB: 02/18/1986



ASA MAVERICK: Last Season: One of nine Mavericks to play in all 35 games... Only goal of the season contributed to a 4-2 win over North Dakota (1/7)... Tied for 19th in the WCHA in defenseman scoring, 1-5--6... One of 12 Mavericks named to the 2006-07 *WCHA All-Academic Team*. **2005-06:** Played in all 36 games... Posted four points with three goals and one assist... Put 28 shots on net and ranked fifth on the team with a .107 shooting percentage... Scored one goal to help lead the Mavericks to a 3-1 win over North Dakota (10/14), and netted one goal apiece against Ohio State (1/7) and Minnesota (2/4). **2004-05:** Saw action in 32 games as a newcomer... Tallied one assist on the season... Assisted on a power-play goal in loss to Wisconsin for first career point (12/11)... Put 31 shots on net, including four in a game on two occasions... Whistled five times for ten penalty minutes.

THE THIBAUT FILE: Attended Ecole secondaire regionale de Hawkesbury, Ont., while competing for the Ottawa Raiders of the National Women's Hockey League in final season... Played in the NCCP Midget AA program the previous season... Also participated in basketball and soccer during prep, earning *Athlete of the Year* distinction four consecutive years... Full name is Andréanne Thibault... Daughter of Rock and Denise Thibault... Born Feb. 18, 1986... Plans to major in physical education at MSU.

Single-Game Highs

Goals: 1, four times
last time vs. North Dakota
(01/07/07)

Assists: 1, seven times
last time vs. Ohio State
(02/16/07)

Points: 1, eleven times
last time vs. Ohio State
(02/16/07) (1A)

Thibault Game-By-Game 2006-07

Date	Opponent	Score	G-A-Pts
10/1	Robert Morris	6-0	0-0-0
10/6	UMD	1-3	0-0-0
10/7	UMD	1-6	0-0-0
10/13	Minn	1-4	0-0-0
10/14	Minn	2-5	0-1-1
10/21	UND	7-0	0-0-0
10/22	UND	3-0	0-0-0
11/3	UW	1-3	0-0-0
11/4	UW	1-6	0-0-0
11/10	Wayne State	6-1	0-0-0
11/11	Wayne State	3-7	0-0-0
11/17	UMD	5-5	0-0-0
11/18	UMD	5-3	0-0-0
11/24	OSU	1-2	0-0-0
11/25	OSU	3-4	0-1-1
12/1	SCSU	3-2	0-0-0
12/2	SCSU	2-3	0-0-0
12/8	BSU	2-5	0-1-1
12/9	BSU	5-1	0-0-0
12/30	Vermont	4-0	0-0-0
12/31	Vermont	7-1	0-0-0
1/6	UND	4-2	0-0-0
1/7	UND	4-2	1-0-1
1/19	MINN	3-2	0-0-0
1/20	MINN	4-3	0-0-0
1/26	UW	0-5	0-0-0
1/27	UW	0-8	0-0-0
2/2	BSU	4-1	0-0-0
2/3	BSU	3-3	0-1-1
2/9	SCSU	4-3	0-0-0
2/10	SCSU	2-0	0-0-0
2/16	OSU	3-4	0-1-1
2/17	OSU	4-6	0-0-0
2/23	OSU	0-1	0-0-0
2/24	OSU	4-5	0-0-0



Thibault Facts

✓ Will play against little sister, Dominique, Oct. 12-13 when MSU travels to Storrs, Conn., to battle UConn.

✓ Only goal of the season contributed to a 4-2 win over North Dakota (1/7).

✓ Led Maverick blue-liners in points.

✓ Scored a career-high three goals in the 2005-06 season.

✓ Favorite sports team is Les Canadiens de Montréal.

THIBAUT SEASON-BY-SEASON

Andréanne Thibault, Sr., Defense, L'Original, Ont.

Year	GP	G	A	Pts	P	PM	PPG	SHG	GWG
2004-05	32	0	1	1	5	10	0	0	0
2005-06	36	3	1	4	7	14	0	0	1
2006-07	35	1	5	6	15	30	0	0	0
Career	103	4	7	11	27	54	0	0	1



2007-08 MINNESOTA STATE HOCKEY

Meet The Mavericks

#14 Maggie Fisher

5-5 • Junior • Forward • South Saint Paul, Minn. • South Saint Paul H.S. • Shoots right • DOB: 12/26/1986



AS A MAVERICK: Last Season: One of nine Mavericks to play in all 35 games...Led the team in scoring for the second consecutive season...Tallied 17-17--34...In WCHA statistics, T-1st in shorthanded points (4), T-5th in shorthanded goals (3), 7th in game-winning goals (5), 10th in goals (17) and 17th in points (34)...Named *WCHA Offensive Player of the Week* after totaling five points (1G, 4A) in a two-game sweep over North Dakota Oct. 21-22...Ranked second on MSU's all-time single-season list for 34 points...Led the team in game-winning goals (5) and established a new single-season record. **2005-06:** Played in all 36 games as a newcomer, leading the Mavericks in goals (16) and points (23) en route to earning *WCHA All-Rookie Team* honors...Additionally led the team with 112 shots on goal and a .143 shooting percentage...Posted two-point totals in six games, and scored two goals in four contests...Also tallied seven assists, three power-play goals and two short-handed goals.

THE FISHER FILE: Three-sport letterwinner (hockey, soccer, track) during her prep career at South Saint Paul High School... Helped hockey team to four straight conference championships, going undefeated in conference play (56-0) while capturing three state titles...A decorated student-athlete, Fisher was selected as the Star Tribune's 2005 Female Athlete of the Year...Named to all-state, all-conference, and all-state tournament teams both her junior and senior seasons, and selected team MVP her final two seasons and served as team captain as a senior...Tallied 173 goals and 173 assists (345 points) for the Packers, and scored five goals in one game...Full name is Margaret Anne Fisher...Daughter of John and Anne Fisher...Born December 26, 1986...A corrections major.

FISHER SEASON-BY-SEASON

Maggie Fisher, Jr., Forward, South Saint Paul, Minn.

Year	GP	G	A	Pts	P	PM	PPG	SHG	GWG
2005-06	36	16	7	23	5	10	3	2	2
2006-07	35	17	17	34	6	12	2	2	5
Career	71	33	24	57	11	22	5	4	7

Single-Game Highs

Goals: 2, eight times
last time vs. Vermont (12/31/06)
Assists: 3, twice
last time vs. Ohio State (02/17/07)
Points: 4
vs. North Dakota (10/21/06) (1G, 3A)

Fisher Game-By-Game 2006-07

Date	Opponent	Score	G-A-Pts
10/1	Robert Morris	6-0	2-1-3
10/6	UMD	1-3	0-0-0
10/7	UMD	1-6	0-0-0
10/13	Minn	1-4	1-0-1
10/14	Minn	2-5	0-0-0
10/21	UND	7-0	1-3-4
10/22	UND	3-0	0-1-1
11/3	UW	1-3	0-0-0
11/4	UW	1-6	1-0-1
11/10	Wayne State	6-1	2-0-2
11/11	Wayne State	3-7	0-0-0
11/17	UMD	5-5	0-0-0
11/18	UMD	5-3	2-0-2
11/24	OSU	1-2	0-0-0
11/25	OSU	3-4	0-1-1
12/1	SCSU	3-2	0-1-1
12/2	SCSU	2-3	0-1-1
12/8	BSU	2-5	0-0-0
12/9	BSU	5-1	0-1-1
12/30	Vermont	4-0	1-0-1
12/31	Vermont	7-1	2-0-2
1/6	UND	4-2	0-0-0
1/7	UND	4-2	1-1-2
1/19	MINN	3-2	1-0-1
1/20	MINN	4-3	1-1-2
1/26	UW	0-5	0-0-0
1/27	UW	0-8	0-0-0
2/2	BSU	4-1	0-2-2
2/3	BSU	3-3	1-1-2
2/9	SCSU	4-3	0-0-0
2/10	SCSU	2-0	1-0-1
2/16	OSU	3-4	0-0-0
2/17	OSU	4-6	0-3-3
2/23	OSU	0-1	0-0-0
2/24	OSU	4-5	0-0-0



Fisher Facts

- ✓ Established MSU all-time career record with seven game-winning goals.
- ✓ Needs just four goals to take the top spot in the career goals category.
- ✓ Recorded four multi-goal games and 10 multi-point games.
- ✓ Just the second Maverick ever to be voted to the *WCHA All-Rookie Team*.
- ✓ Favorite cartoon character is the Tasmanian Devil.

2007-08 MINNESOTA STATE HOCKEY

Meet The Mavericks



#7 Kala Buganski

5-9 • Sophomore • Forward • Andover, Minn. • Anoka H.S. • Shoots left • DOB: 06/27/1988



AS A MAVERICK: Last Season: Saw action in 32 games for the Mavericks... Posted five goals and 10 assists... Ranked T-12th overall for freshman points in WCHA... Tallied her first career assist against University of Minnesota (10/14)... Scored first career goal against University of North Dakota (10/21) on her way to a career best three points in a game... Netted a career-high two goals in a 4-1 win over Bemidji State (2/2)... Recorded one shorthanded goal... Earned a +4, fourth best on the team.

THE BUGANSKI FILE: Two-time all-state and five-time all-conference selection at Anoka High School... Named a top-10 Ms. Hockey candidate as a senior captain... Totaled 193 points during prep career, helping her team reach the state tournament four times... Full name is Kala Lyn Buganski... Daughter of Brian and Cindy Buganski... Born June 27, 1988... Currently undecided on a major.

Single-Game Highs

Goals: 2
vs. Bemidji State
(02/02/07)

Assists: 2, twice
last time vs. St. Cloud
(02/09/07)

Points: 3
vs. North Dakota
(10/21/06) (1G, 2A)

Buganski Game-By-Game 2006-07

Date	Opponent	Score	G-A-Pts
10/1	Robert Morris	6-0	DNP
10/6	UMD	1-3	0-0-0
10/7	UMD	1-6	0-0-0
10/13	Minn	1-4	0-0-0
10/14	Minn	2-5	0-1-1
10/21	UND	7-0	1-2-3
10/22	UND	3-0	0-0-0
11/3	UW	1-3	0-0-0
11/4	UW	1-6	0-0-0
11/10	Wayne State	6-1	0-0-0
11/11	Wayne State	3-7	DNP
11/17	UMD	5-5	0-0-0
11/18	UMD	5-3	0-0-0
11/24	OSU	1-2	DNP
11/25	OSU	3-4	0-1-1
12/1	SCSU	3-2	0-0-0
12/2	SCSU	2-3	0-1-1
12/8	BSU	2-5	0-0-0
12/9	BSU	5-1	0-0-0
12/30	Vermont	4-0	0-1-1
12/31	Vermont	7-1	0-0-0
1/6	UND	4-2	0-0-0
1/7	UND	4-2	0-0-0
1/19	MINN	3-2	1-0-1
1/20	MINN	4-3	0-0-0
1/26	UW	0-5	0-0-0
1/27	UW	0-8	0-0-0
2/2	BSU	4-1	2-0-2
2/3	BSU	3-3	0-1-1
2/9	SCSU	4-3	0-2-2
2/10	SCSU	2-0	0-0-0
2/16	OSU	3-4	0-0-0
2/17	OSU	4-6	0-0-0
2/23	OSU	0-1	0-0-0
2/24	OSU	4-5	1-1-2

BUGANSKI SEASON-BY-SEASON

Kala Buganski, So., Forward, Andover, Minn.

Year	GP	G	A	Pts	P	PM	PPG	SHG	GWG
2006-07	32	5	10	15	7	14	1	1	1
Career	32	5	10	15	7	14	1	1	1



Buganski Facts

✓ Ranked T-12th in freshman scoring in the WCHA.

✓ Recorded four multi-point games, including three points (1G, 2A) in a 7-0 win over UND Oct. 21, 2006.

✓ Scored twice in a 4-1 win over BSU Feb. 2, 2007.

✓ Her 15 points was good for ninth on the team and third best among freshman.

✓ Favorite athlete is Sydney Crosby.



2007-08 MINNESOTA STATE HOCKEY

Meet The Mavericks

#13 Ida Clark

5-3 • Sophomore • Forward/Defense • Vallentuna, Sweden • MB Hockey • Shoots left • DOB: 03/28/1986



AS A MAVERICK: Last Season: One of two freshman to see action in all 35 games...Recorded first career assist and a season-high +3 rating in 6-0 win over Robert Morris University (Pa.) (10/1)...T-23rd in WCHA defenseman scoring at 0-5-5...Committed nine penalties for 18 minutes in the box, the third least of Maverick defensemen.

THE CLARK FILE: Two-year member and letterwinner of the Maldrhojden/Bredang hockey club, playing defense...Helped her team compile back-to-back 30-0 seasons en route to winning two Swedish Championships...Played one season at Warner High School, starting and lettering while playing defense...Honored as the best athlete in school in 2005-06...Full name is Ida Eleonor Clark...Daughter of Rose-Marie Clark and Lars Gineman...Born March 28, 1986...studying to be a dietician.

Single-Game Highs

Goals: None

Assists: 1, five times
last time vs. Ohio State
(02/16/07)

Points: 1, five times
last time vs. Ohio State
(02/16/07) (1A)

Clark Game-By-Game 2006-07

Date	Opponent	Score	G-A-Pts
10/1	Robert Morris	6-0	0-1-1
10/6	UMD	1-3	0-0-0
10/7	UMD	1-6	0-0-0
10/13	Minn	1-4	0-0-0
10/14	Minn	2-5	0-0-0
10/21	UND	7-0	0-0-0
10/22	UND	3-0	0-0-0
11/3	UW	1-3	0-0-0
11/4	UW	1-6	0-0-0
11/10	Wayne State	6-1	0-0-0
11/11	Wayne State	3-7	0-0-0
11/17	UMD	5-5	0-1-1
11/18	UMD	5-3	0-0-0
11/24	OSU	1-2	0-0-0
11/25	OSU	3-4	0-0-0
12/1	SCSU	3-2	0-0-0
12/2	SCSU	2-3	0-0-0
12/8	BSU	2-5	0-0-0
12/9	BSU	5-1	0-0-0
12/30	Vermont	4-0	0-0-0
12/31	Vermont	7-1	0-1-1
1/6	UND	4-2	0-0-0
1/7	UND	4-2	0-0-0
1/19	MINN	3-2	0-0-0
1/20	MINN	4-3	0-0-0
1/26	UW	0-5	0-0-0
1/27	UW	0-8	0-0-0
2/2	BSU	4-1	0-0-0
2/3	BSU	3-3	0-1-1
2/9	SCSU	4-3	0-0-0
2/10	SCSU	2-0	0-0-0
2/16	OSU	3-4	0-1-1
2/17	OSU	4-6	0-0-0
2/23	OSU	0-1	0-0-0
2/24	OSU	4-5	0-0-0



Clark Facts

✓ T-23rd in WCHA defenseman scoring with five points.

✓ The Mavericks were 2-1-2 when she recorded an assist.

✓ Helped hockey club to two 30-0 seasons and two Swedish Championships.

✓ One of two Swedish players on the Maverick roster.

✓ Favorite Athlete is Mattias Weinhandl, who is in the Minn. Wild system.

CLARK SEASON-BY-SEASON

Ida Clark, So., Defense, Vallentuna, Sweden

Year	GP	G	A	Pts	P	PM	PPG	SHG	GWG
2006-07	35	0	5	5	9	18	0	0	0
Career	35	0	5	5	9	18	0	0	0

2007-08 MINNESOTA STATE HOCKEY

Meet The Mavericks



#35 Katerina Geertsen

5-11 • Sophomore • Goaltender • Rock Rapids, Alberta • Warner School • Catches left • DOB: 09/19/1988



ASA MAVERICK: Last Season: Started two games for the Mavericks and appeared in another...Finished season 0-2-0...First complete game at Ohio State (2/17) where she registered a season-high 32 saves...First career start at Wayne State (11/11), made 14 saves...Made first career appearance Nov. 4 vs. Wisconsin.

THE GEERTSEN FILE: Played five years of hockey, spending her sophomore year with the Sherwood Park ICE, and her remaining two years of prep with the Warner Warriors...Started all three seasons in goal and helped the Warriors win league championships her junior and senior seasons...Full name is Katerina Lynn Geersten...Daughter of Larry and Kathy Geersten...Born September 19, 1988...majoring in dietetics.

Single-Game Highs

Shots: 38
vs. Ohio State
(02/17/07)

Saves: 32
vs. Ohio State
(02/17/07)

GA: 6
vs. Ohio State
(02/17/07)

Geertsen Game-By-Game 2006-07

Date	Opponent	Score	G-A-Pts
10/1	Robert Morris	6-0	DNP
10/6	UMD	1-3	DNP
10/7	UMD	1-6	DNP
10/13	Minn	1-4	DNP
10/14	Minn	2-5	DNP
10/21	UND	7-0	DNP
10/22	UND	3-0	DNP
11/3	UW	1-3	DNP
11/4	UW	1-6	8/7
11/10	Wayne State	6-1	DNP
11/11	Wayne State	3-7	19/14
11/17	UMD	5-5	DNP
11/18	UMD	5-3	DNP
11/24	OSU	1-2	DNP
11/25	OSU	3-4	DNP
12/1	SCSU	3-2	DNP
12/2	SCSU	2-3	DNP
12/8	BSU	2-5	DNP
12/9	BSU	5-1	DNP
12/30	Vermont	4-0	DNP
12/31	Vermont	7-1	DNP
1/6	UND	4-2	DNP
1/7	UND	4-2	DNP
1/19	MINN	3-2	DNP
1/20	MINN	4-3	DNP
1/26	UW	0-5	DNP
1/27	UW	0-8	DNP
2/2	BSU	4-1	DNP
2/3	BSU	3-3	DNP
2/9	SCSU	4-3	DNP
2/10	SCSU	2-0	DNP
2/16	OSU	3-4	DNP
2/17	OSU	4-6	38/32
2/23	OSU	0-1	DNP
2/24	OSU	4-5	DNP



Geertsen Facts

- ✓ Made seven saves in first career appearance vs. Wisconsin (11/4/06)
- ✓ Faced 38 shots, made 32 saves in first career complete game vs. OSU (2/17/07)
- ✓ Logged 95:59 and made 53 saves in inaugural season with the Mavericks.
- ✓ Uncle Jim Ennis played collegiate hockey at BU and five professional games for the Edmonton Oilers, scoring once.
- ✓ Favorite sports team is the Calgary Flames.

GEERTSEN SEASON-BY-SEASON

Katerina Geertsen, So., Goaltender, Rock Rapids, Alberta

Year	GS	GP	MP	W	L	T	SOG	Svs	Sv%	GA	GAA	SO
2006-07	2	3	95:59	0	2	0	65	53	.815	12	7.50	0
Career	2	3	95:59	0	2	0	65	53	.815	12	7.50	0



2007-08 MINNESOTA STATE HOCKEY

Meet The Mavericks

#17 Jenna Hewitt

5-4 • Sophomore-R • Forward • Ramsey, Minn. • Anoka H.S. • Shoots right • DOB: 09/14/1986



ASA MAVERICK: Last season: Saw action in 22 games...Scored her first career goal in a 4-3 loss to Ohio State (11/29)...One of 12 Mavericks named to the 2006-07 WCHA All-Academic Team. **2005-06:** Received medical redshirt.

THE HEWITT FILE: Five-time letterwinner for Anoka High School...Led the Tornadoes to 20 or more wins all five seasons and five state tournament appearances...Four-time All-Northwest Suburban Conference selection...Twice won *Fastest Skater* at conference skills competition...Finished prep career with over 180 points and ranks second on AHS charts in assists...Also a three-time all-conference selection and three-time *Team MVP* as a soccer player...Full name is Jenna Marie Hewitt...Daughter of Bob and Denise Hewitt...Born September 14, 1986...intends to major in mass communication.

Single-Game Highs

Goals: 1
vs. Ohio State (01/25/06)

Assists: None

Points: 1
vs. Ohio State (01/25/06)
(1A)

Hewitt Game-By-Game 2006-07

Date	Opponent	Score	G-A-Pts
10/1	Robert Morris	6-0	DNP
10/6	UMD	1-3	DNP
10/7	UMD	1-6	DNP
10/13	Minn	1-4	DNP
10/14	Minn	2-5	DNP
10/21	UND	7-0	DNP
10/22	UND	3-0	DNP
11/3	UW	1-3	DNP
11/4	UW	1-6	DNP
11/10	Wayne State	6-1	DNP
11/11	Wayne State	3-7	0-0-0
11/17	UMD	5-5	0-0-0
11/18	UMD	5-3	DNP
11/24	OSU	1-2	0-0-0
11/25	OSU	3-4	1-0-1
12/1	SCSU	3-2	0-0-0
12/2	SCSU	2-3	0-0-0
12/8	BSU	2-5	0-0-0
12/9	BSU	5-1	0-0-0
12/30	Vermont	4-0	0-0-0
12/31	Vermont	7-1	0-0-0
1/6	UND	4-2	0-0-0
1/7	UND	4-2	0-0-0
1/19	MINN	3-2	0-0-0
1/20	MINN	4-3	0-0-0
1/26	UW	0-5	0-0-0
1/27	UW	0-8	0-0-0
2/2	BSU	4-1	DNP
2/3	BSU	3-3	DNP
2/9	SCSU	4-3	DNP
2/10	SCSU	2-0	0-0-0
2/16	OSU	3-4	0-0-0
2/17	OSU	4-6	0-0-0
2/23	OSU	0-1	0-0-0
2/24	OSU	4-5	0-0-0



Hewitt Facts

✓ Played in 22 games getting five shots.

✓ Scored first career goal in a 4-3 loss to Ohio State (11/29).

✓ Finished prep career with over 180 points and ranks second on Anoka High School charts in assists.

✓ Sister, Jamie, played hockey at the University of Wisconsin-Eau Claire.

✓ Rascal Flatts is favorite band.

HEWITT SEASON-BY-SEASON

Jenna Hewitt, So.-R, Forward, Ramsey, Minn.

Year	GP	G	A	Pts	P	PM	PPG	SHG	GWG
2005-06	2	0	0	0	1	2	0	0	0
2006-07	21	1	0	1	3	6	0	0	0
Career	23	1	0	1	4	8	0	0	0

2007-08 MINNESOTA STATE HOCKEY

Meet The Mavericks



#10 Christina Lee

5-3 • Sophomore • Forward • Maple Plain, Minn. • Wayzata H.S. • Shoots right • DOB: 02/25/1988



AS A MAVERICK: Last Season: One of two freshman to see action in all 35 games...Scored 15 goals and added 13 assists for 28 points to rank third on the team in scoring...Named *WCHA Rookie of the Week* after tallying three goals and an assist in a sweep over UND Jan. 6-7...Led Mavericks with eight power play goals, ranking her second on the all-time list for power play goals in a season...Finished seventh in freshman scoring in the WCHA...13th in goals scored in WCHA...23rd in points in WCHA...Tied for fifth in power play goals (8)...Recorded seven multi-point games...Game-winning overtime goal vs SCSU (2/9)...12th in game winning goals in WCHA (3).

THE LEE FILE: Five-year letterwinner at Wayzata High School...Earned all-state and all-conference distinction her sophomore, junior and senior seasons, helping team place third at state as a junior...Four-time team MVP, totaling 192 goals and 129 assists for 321 points...Also selected all-conference as a freshman and selected all-conference honorable mention and rookie of the year as an 8th grader...Team won conference championships each of her final two seasons, capturing the 6AA section title her junior season and finishing runners-up her senior season...Full name is Christina Kay Lee...Daughter of Bill and Suzi Lee...Born February 25, 1988...Majoring in elementary education.

LEE SEASON-BY-SEASON

Christina Lee, So., Forward, Maple Plain, Minn.

Year	GP	G	A	Pts	P	PM	PPG	SHG	GWG
2006-07	35	15	13	28	7	14	8	1	3
Career	35	15	13	28	7	14	8	1	3

Single-Game Highs

Goals: 2, twice
last time vs. Bemidji State
(12/09/06)

Assists: 2, twice
last time vs. Ohio State
(02/17/07)

Points: 3, twice
last time vs. North Dakota
(01/06/07) (1G, 2A)

Lee Game-By-Game 2006-07

Date	Opponent	Score	G-A-Pts
10/1	Robert Morris	6-0	0-0-0
10/6	UMD	1-3	1-0-1
10/7	UMD	1-6	0-1-1
10/13	Minn	1-4	0-0-0
10/14	Minn	2-5	0-0-0
10/21	UND	7-0	2-1-3
10/22	UND	3-0	1-1-2
11/3	UW	1-3	0-0-0
11/4	UW	1-6	0-0-0
11/10	Wayne State	6-1	1-0-1
11/11	Wayne State	3-7	0-1-1
11/17	UMD	5-5	0-1-1
11/18	UMD	5-3	0-1-1
11/24	OSU	1-2	0-0-0
11/25	OSU	3-4	0-0-0
12/1	SCSU	3-2	0-0-0
12/2	SCSU	2-3	1-0-1
12/8	BSU	2-5	0-0-0
12/9	BSU	5-1	2-0-2
12/30	Vermont	4-0	1-0-1
12/31	Vermont	7-1	0-0-0
1/6	UND	4-2	2-0-2
1/7	UND	4-2	1-0-1
1/19	MINN	3-2	0-1-1
1/20	MINN	4-3	1-1-2
1/26	UW	0-5	0-0-0
1/27	UW	0-8	0-0-0
2/2	BSU	4-1	1-1-2
2/3	BSU	3-3	1-0-1
2/9	SCSU	4-3	1-0-1
2/10	SCSU	2-0	0-0-0
2/16	OSU	3-4	0-0-0
2/17	OSU	4-6	0-2-2
2/23	OSU	0-1	0-0-0
2/24	OSU	4-5	0-0-0



Lee Facts

✓ Voted Rookie of the Year in team awards last season.

✓ Second on all-time list for power play goals in a season with eight.

✓ Finished seventh in freshman scoring in the WCHA.

✓ Totalled three game winning goals.

✓ Lists Sugarland, Rascal Flatts and Earth Wind and Fire as favorite bands.



2007-08 MINNESOTA STATE HOCKEY

Meet The Mavericks

#23 Kathleen Rosso

5-5 • Sophomore • Defense • Rogers, Minn. • Buffalo H.S. • Shoots right • DOB: 10/19/1987



AS A MAVERICK: Last Season: Played in 32 games where she recorded three assists...Recorded an assist in a 4-3 overtime win over St. Cloud State Feb. 9...Voted team's Most Improved Player.

THE ROSSO FILE: Four-year starter and letterwinner at Buffalo High School... An all-conference selection at defense her junior and senior seasons, and chosen all-conference honorable mention as a sophomore...Named team captain and awarded MVP as a senior...Helped team finish 4th at the state tournament her junior season, picking up all-tournament honors...Full name is Kathleen Marie Rosso...Daughter of Bill and Tracey Rosso...Born October 19, 1987...Majoring in English education and creative writing.

Single-Game Highs

Goals: None

Assists: 1, three times
last time vs. St. Cloud
(02/09/07)

Points: 1, three times
last time vs. St. Cloud
(02/09/07) (1A)

Rosso Game-By-Game 2006-07

Date	Opponent	Score	G-A-Pts
10/1	Robert Morris	6-0	0-0-0
10/6	UMD	1-3	DNP
10/7	UMD	1-6	0-0-0
10/13	Minn	1-4	0-0-0
10/14	Minn	2-5	0-0-0
10/21	UND	7-0	0-0-0
10/22	UND	3-0	0-0-0
11/3	UW	1-3	0-0-0
11/4	UW	1-6	0-0-0
11/10	Wayne State	6-1	0-1-1
11/11	Wayne State	3-7	0-0-0
11/17	UMD	5-5	0-0-0
11/18	UMD	5-3	0-0-0
11/24	OSU	1-2	0-0-0
11/25	OSU	3-4	0-0-0
12/1	SCSU	3-2	0-0-0
12/2	SCSU	2-3	0-0-0
12/8	BSU	2-5	0-0-0
12/9	BSU	5-1	0-0-0
12/30	Vermont	4-0	0-1-1
12/31	Vermont	7-1	DNP
1/6	UND	4-2	0-0-0
1/7	UND	4-2	DNP
1/19	MINN	3-2	0-0-0
1/20	MINN	4-3	0-0-0
1/26	UW	0-5	0-0-0
1/27	UW	0-8	0-0-0
2/2	BSU	4-1	0-0-0
2/3	BSU	3-3	0-0-0
2/9	SCSU	4-3	0-1-1
2/10	SCSU	2-0	0-0-0
2/16	OSU	3-4	0-0-0
2/17	OSU	4-6	0-0-0
2/23	OSU	0-1	0-0-0
2/24	OSU	4-5	0-0-0

ROSSO SEASON-BY-SEASON

Kathleen Rosso, So., Defense, Rogers, Minn.

Year	GP	G	A	Pts	P	PM	PPG	SHG	GWG
2006-07	32	0	3	3	11	22	0	0	0
Career	32	0	3	3	11	22	0	0	0



Rosso Facts

✓ Will play a home game against Regina on her birthday (10/19).

✓ Voted Most Improved by the team last season.

✓ The Mavericks were victorious in every game in which Rosso earned a point.

✓ All-tournament team selection junior season of high school.

✓ Lists camping as favorite thing to do outside of hockey.

2007-08 MINNESOTA STATE HOCKEY

Meet The Mavericks



#28 Holly Snyder

5-7 • Sophomore • Defense • Kenosha, Wis. • Kenosha H.S. • Shoots right • DOB: 05/15/1987



ASA MAVERICK: Last Season: Selected to 2006-07 WCHA All-Rookie Team... Tallied five assists in 31 games...Tallied two points (two assists) in the home series with UND Jan. 6-7...Tied for eighth on the team in plus/minus with a +1.

THE SNYDER FILE: One-year starter on Team Wisconsin...Played two years for the Kenosha Komets varsity boys' hockey team...Served as team captain her senior season and received team MVP honors as a junior while netting a game-winning goal against De Pere varsity in Green Bay, Wis., in 2005...Participated at nationals in Pennsylvania with the Madison Capitols her sophomore season, and also in Rochester, N.Y., her freshman season...Full name is Holly Ann Snyder...Daughter of Todd and Julie Snyder...Born May 15, 1987...Majoring in elementary education.

Single-Game Highs

Goals: None

Assists: 1, five times
last time vs. Ohio State
(02/17/07)

Points: 1, five times
last time vs. Ohio State
(02/17/07) (1A)

Snyder Game-By-Game 2006-07

Date	Opponent	Score	G-A-Pts
10/1	Robert Morris	6-0	0-0-0
10/6	UMD	1-3	0-0-0
10/7	UMD	1-6	0-0-0
10/13	Minn	1-4	0-0-0
10/14	Minn	2-5	0-0-0
10/21	UND	7-0	0-0-0
10/22	UND	3-0	0-0-0
11/3	UW	1-3	0-0-0
11/4	UW	1-6	0-0-0
11/10	Wayne State	6-1	0-0-0
11/11	Wayne State	3-7	0-0-0
11/17	UMD	5-5	0-0-0
11/18	UMD	5-3	0-0-0
11/24	OSU	1-2	0-0-0
11/25	OSU	3-4	0-0-0
12/1	SCSU	3-2	0-1-1
12/2	SCSU	2-3	0-0-0
12/8	BSU	2-5	0-0-0
12/9	BSU	5-1	0-0-0
12/30	Vermont	4-0	0-0-0
12/31	Vermont	7-1	0-0-0
1/6	UND	4-2	0-1-1
1/7	UND	4-2	0-1-1
1/19	MINN	3-2	DNP
1/20	MINN	4-3	DNP
1/26	UW	0-5	DNP
1/27	UW	0-8	DNP
2/2	BSU	4-1	0-0-0
2/3	BSU	3-3	0-0-0
2/9	SCSU	4-3	0-0-0
2/10	SCSU	2-0	0-1-1
2/16	OSU	3-4	0-0-0
2/17	OSU	4-6	0-1-1
2/23	OSU	0-1	0-0-0
2/24	OSU	4-5	0-0-0



Snyder Facts

✓ 2006-07 WCHA All-Rookie Team selection.

✓ Four of her five assists came on the power play.

✓ +1 on the season, ranking her eighth on the team.

✓ T-23rd in the WCHA for defenseman scoring.

✓ Lists Rascal Flatts as her favorite band.

SNYDER SEASON-BY-SEASON

Holly Snyder, So., Defense, Kenosha, Wis.

Year	GP	G	A	Pts	P	PM	PPG	SHG	GWG
2006-07	31	0	5	5	11	22	0	0	0
Career	31	0	5	5	11	22	0	0	0



2007-08 MINNESOTA STATE HOCKEY

Meet The Mavericks

#15 Ashley Young

5-3 • Sophomore-R • Forward • South Saint Paul, Minn. • South Saint Paul H.S. • Shoots left • DOB: 06/22/1987



ASA MAVERICK: Last Season: One of nine Mavericks to play in all 35 games last year...Finished seventh on the team in assists and scoring at 6-10--16...Four game stretch with at least one point, seven points total (2G, 5A)...Four power play goals ranked her fourth on the team...One of the 12 Mavericks named to the 2006-07 WCHA All-Academic Team. **2005-06:** Received medical redshirt.

THE YOUNG FILE: Led South St. Paul to three state championships and a 118-8-0 mark in four seasons of play...Lettered five times...Earned all-state and all-conference recognition four times...Twice earned all-metro honors...Named to all-tournament team at Minnesota state tourney three times...Finished high school career with school records in points (356) and assists (213)...Established school marks with 108 points and 77 assists as a senior...Also set single-game mark with six assists...Concluded high school career with *Pioneer Press Player of the Year* honors...Also named a finalist for *Ms. Hockey* as top female player in Minnesota...Played softball and soccer for the Packers as well...Father John played college hockey at Michigan Tech and suited up for Minnesota Moose...Full name is Ashley Marie Young...Daughter of John and Shannon Young...Born June 22, 1987...Intends to major in human biology.

YOUNG SEASON-BY-SEASON

Ashley Young, So.-R, Forward, South Saint Paul, Minn.

Year	GP	G	A	Pts	P	PM	PPG	SHG	GWG
2005-06	1	0	0	0	0	0	0	0	0
2006-07	15	6	10	16	9	29	4	0	0
Career	16	6	10	16	9	29	4	0	0

Single-Game Highs

Goals: 2
vs. Ohio State
(02/17/07)

Assists: 2
vs. Bemidji State
(12/09/06)

Points: 2, four times
vs. Ohio State
(02/17/07) (2A)

Young Game-By-Game 2006-07

Date	Opponent	Score	G-A-Pts
10/1	Robert Morris	6-0	0-0-0
10/6	UMD	1-3	0-0-0
10/7	UMD	1-6	0-0-0
10/13	Minn	1-4	0-0-0
10/14	Minn	2-5	0-0-0
10/21	UND	7-0	0-1-1
10/22	UND	3-0	0-0-0
11/3	UW	1-3	1-0-1
11/4	UW	1-6	0-1-1
11/10	Wayne State	6-1	0-1-1
11/11	Wayne State	3-7	0-0-0
11/17	UMD	5-5	0-0-0
11/18	UMD	5-3	0-0-0
11/24	OSU	1-2	0-0-0
11/25	OSU	3-4	1-0-1
12/1	SCSU	3-2	0-0-0
12/2	SCSU	2-3	0-0-0
12/8	BSU	2-5	0-0-0
12/9	BSU	5-1	0-2-2
12/30	Vermont	4-0	0-1-1
12/31	Vermont	7-1	1-1-2
1/6	UND	4-2	1-1-2
1/7	UND	4-2	0-0-0
1/19	MINN	3-2	0-1-1
1/20	MINN	4-3	0-0-0
1/26	UW	0-5	0-0-0
1/27	UW	0-8	0-0-0
2/2	BSU	4-1	0-1-1
2/3	BSU	3-3	0-0-0
2/9	SCSU	4-3	0-0-0
2/10	SCSU	2-0	0-0-0
2/16	OSU	3-4	0-0-0
2/17	OSU	4-6	2-0-2
2/23	OSU	0-1	0-0-0
2/24	OSU	4-5	0-0-0



Young Facts

- ✓ Four of her six goals came on the power play.
- ✓ Tallied four multi-point games.
- ✓ Scored twice in a 6-4 loss to Ohio State (2/17).
- ✓ Father, John, played hockey at Michigan Tech and with the Minnesota Moose.
- ✓ Favorite bands are Rascal Flatts and Brad Paisley.

2007-08 MINNESOTA STATE HOCKEY

Meet The Mavericks



#5 Ashley Bliskowski

5-5 • Freshman
Defense • St. Francis, Minn.
St. Francis H.S.
Shoots right • DOB: 02/27/1989

THE BLISKOWSKI FILE: Three-year team captain for St. Francis High School while playing defense....Was a letterwinner and all-conference selection four times...Received team hustle award three times....Received Hobey Baker Character Award as a senior...Three times earned best defense honors from teammates...Full name is Ashley Lynn Bliskowski...Daughter of John and Brenda Bliskowski...Born February 27, 1989...Favorite cartoon is Spongebob Squarepants...Currently undecided on a major.



#19 Lisa Edman

5-6 • Freshman
Forward • Ornskoldsvik, Sweden
Modo
Shoots left • DOB: 04/14/1987

THE EDMAN FILE: Played three years for the Swedish club team Modo...Helped the team take third place in the Four Nation Tournament in her senior year and runner-up in her junior season...Selected best player in 2005...Full name is Lisa Maria Edman...Daughter of Leif and Karin Edman...Born in Sjalevad, Örnsköldsvik May 14, 1987...Favorite bands are Rascal Flatts and Mcfly...Intends to major in marketing.



#37 Kristi Ellis

5-5 • Freshman
Defense • Rogers, Minn.
Elk River H.S.
Shoots right • DOB: 02/27/1989

THE ELLIS FILE: Five-year letterwinner and started her last three years at Elk River High School...Earned all-state honorable mention her freshman, junior and senior seasons and all-conference all four years...Selected rookie of the year as an eighth grader...Helped her team win the state championship in her junior season...Full name is Kristi Lynne Ellis...Daughter of Tim and Lynne Ellis...Born April 28, 1989...Favorite athlete is Paul Martain...Intends to major in human performance.



#39 Paige Thunder

5-9 • Freshman
Goaltender • Cloquet, Minn.
Cloquet H.S.
Catches left • DOB: 04/04/1989

THE THUNDER FILE: Three-year letterwinner and earned Minnesota goalie runner-up her senior year...Helped Cloquet High School win conference championships in her final two seasons, capturing the 7AA section title her junior season and finishing runner-up her senior season...Selected All-conference her junior and senior season...Two-time All-State First Team selection...Two-time Lake Superior Conference First Team selection...Full name is Paige Alexa Thunder...Daughter of Kurt and Sheri Englund...Born April 4, 1989...Currently undecided on a major...Favorite hockey player is Marian Gaborik.



#8 Nina Tikkinen

5-6 • Freshman
Forward • Salo, Finland
Karpas Oulu
Shoots left • DOB: 02/06/1987

THE TIKKINEN FILE: Spent three years competing with the Finnish national team and selected Rookie of the Year in 2003-04...Played in 2007 World Championships (Winnipeg, Man.) and 2006 Four Nations Tournament (Kitchener, Ont.) as a member of Finland's National Team...Tallied three goals and four assists for seven points for her club team, Karpas Oulu, in 2006-07...Full name is Nina Minttu Maria Tikkinen...Daughter of Marklav and Anna-Liisa Tikkinen...Favorite cartoon is Viivi and Wagner...Proposed history major.



#4 Amy Udvig

5-6 • Freshman
Defense • New Brighton, Minn.
Irondale H.S.
Shoots left • DOB: 09/11/1988

THE UDVIG FILE: Four-year starter and letter winner for Irondale High School....Also started and lettered three years in soccer...Named to the all-conference team four times...Earned honorable mention all-state and second team all-metro senior year...Team captain junior and senior years...Finished high school with 94 career points...Full name is Amy Joan Udvig...Daughter of Joe and Kathy Udvig...Born September 11, 1988...Likes to hang out with friends when not playing hockey...Proposed nursing major.



2007-08 MINNESOTA STATE HOCKEY

2006-07 MSU Schedule/Results

2006-07 MSU Women's Hockey

Date	Opponent	W/L/T	Score	Attend
Oct. 01, 2006	Robert Morris	W	6-0	268
*Oct. 06, 2006	MINNESOTA DULUTH	L	1-3	255
*Oct. 07, 2006	MINNESOTA DULUTH	L	1-6	172
*Oct. 13, 2006	at Minnesota	L	1-4	869
*Oct. 14, 2006	at Minnesota	L	2-5	1110
*Oct. 21, 2006	at North Dakota	W	7-0	372
*Oct. 22, 2006	at North Dakota	W	3-0	485
*Nov. 03, 2006	WISCONSIN	L	1-3	315
*Nov. 04, 2006	WISCONSIN	L	1-6	215
Nov. 10, 2006	at Wayne State	W	6-1	247
Nov. 11, 2006	at Wayne State	L	3-7	150
*Nov. 17, 2006	at Minnesota Duluth	T OT	5-5	604
*Nov. 18, 2006	at Minnesota Duluth	W	5-3	751
*Nov. 24, 2006	OHIO STATE	L	1-2	300
*Nov. 25, 2006	OHIO STATE	L	3-4	317
*Dec. 01, 2006	at St. Cloud	W	3-2	354
*Dec. 02, 2006	at St. Cloud	L	2-3	276
*Dec. 08, 2006	BEMIDJI STATE	L	2-5	289
*Dec. 09, 2006	BEMIDJI STATE	W	5-1	315
Dec. 30, 2006	VERMONT	W	4-0	53
Dec. 31, 2006	VERMONT	W	7-1	133
*Jan. 06, 2007	NORTH DAKOTA	W	4-2	163
*Jan. 07, 2007	NORTH DAKOTA	W	4-2	151
*Jan. 19, 2007	MINNESOTA	W	3-2	451
*Jan. 20, 2007	MINNESOTA	W	4-3	689
*Jan. 26, 2007	at Wisconsin	L	0-5	857
*Jan. 27, 2007	at Wisconsin	L	0-8	2556
*Feb. 02, 2007	at Bemidji State	W	4-1	361
*Feb. 03, 2007	at Bemidji State	T OT	3-3	289
*Feb. 09, 2007	ST. CLOUD STATE	W OT	4-3	266
*Feb. 10, 2007	ST. CLOUD STATE	W	2-0	289
*Feb. 16, 2007	at Ohio State	L OT	3-4	289
*Feb. 17, 2007	at Ohio State	L	4-6	401
Feb. 23, 2007	at Ohio State	L	0-1	256
Feb. 24, 2007	at Ohio State	L OT	4-5	314

* Conference Game



2007-08 MINNESOTA STATE HOCKEY

2006-07 MSU Statistics



16-17-2 Overall Record

12-14-2 WCHA

Player	GP	G	A	PTS	PEN/MIN	PP	SH	GW	GT	SOG	PCT	GP	G	A	PTS	PEN/MIN	PP	SH	GW	GT
Maggie Fisher	35	17	17	34	6/12	2	2	5	0	106	.160	28	10	16	26	5/10	2	2	3	0
Lindsay Macy	34	16	17	33	34/87	3	2	1	0	148	.108	27	8	10	18	32/83	3	2	0	0
Christina Lee	35	15	13	28	7/14	8	1	3	0	135	.111	28	13	12	25	7/14	7	1	3	0
Kristina Bunker	35	8	18	26	19/49	3	0	0	0	120	.067	28	6	13	29	16/32	3	0	0	0
Shera Vis	35	11	12	23	14/28	5	0	3	0	98	.112	28	9	7	16	10/20	4	0	3	0
Jodi Helminen	33	7	12	19	9/18	2	0	1	0	72	.097	26	6	9	15	8/16	2	0	0	0
Ashley Young	35	6	10	16	9/29	4	0	0	0	61	.098	28	5	7	12	7/25	3	0	0	0
Amanda Stohr	30	7	8	15	10/20	0	3	2	0	59	.119	25	6	6	12	8/16	0	3	2	0
Kala Buganski	32	5	10	15	7/14	1	1	1	0	36	.139	27	4	8	12	6/12	1	1	1	0
Noelle Needham	35	10	4	14	9/18	7	0	0	0	28	.357	28	7	2	9	8/16	6	0	0	0
Andreanne Thibault	35	1	5	6	15/30	0	0	0	0	33	.030	28	1	5	6	13/26	0	0	0	0
Ida Clark	35	0	5	5	9/18	0	0	0	0	19	.000	28	0	3	3	7/14	0	0	0	0
Holly Snyder	31	0	5	5	11/22	0	0	0	0	38	.000	24	0	5	5	9/18	0	0	0	0
Sammy Miller	33	1	3	4	21/42	0	0	0	0	23	.043	26	0	2	2	18/36	0	0	0	0
Brittany Mackley	35	2	1	3	5/21	0	0	0	0	13	.154	28	1	1	2	4/19	0	0	0	0
Megan Jedinak	30	1	2	3	6/12	0	0	0	0	11	.091	25	1	1	2	5/10	0	0	0	0
Kathleen Rosso	32	0	3	3	11/22	0	0	0	0	10	.000	26	0	1	1	11/22	0	0	0	0
Jenna Hewitt	21	1	0	1	3/6	0	0	0	0	5	.200	16	1	0	1	1/2	0	0	0	0
Richelle St. Croix	27	0	1	1	5/10	0	0	0	0	6	.000	22	0	0	0	2/4	0	0	0	0
Andrea Herold	2	0	0	0	---	0	0	0	0	0	.000	2	0	0	0	---	0	0	0	0
Britni Kehler	34	0	0	0	2/4	0	0	0	0	0	.000	27	0	0	0	2/4	0	0	0	0
Jessica Knight	4	0	0	0	1/2	0	0	0	0	4	.000	3	0	0	0	---	0	0	0	0
TEAM 25							2/4											2/4		
MSU	35	108	146	254	215-482	35	9	16	0	1025	.105	28	78	108	186	181/403	31	9	12	0
Opponents	35	106	161	267	228-483	35	3	17	2	1223	.087	28	91	140	231	198/423	31	3	14	2

Empty Net Goals: MSU 0, Opponents 2

Overtime Goals: MSU 1, Opponents 1

Special Teams/Scoring/Shots on Goal

Overall

Conference

	Power Plays		Penalty Kills		Score by Periods			SOG By Periods			Power Plays		Penalty Kills		Score by Periods			SOG by Period		
MSU	35/192		215/180		38/39/30/1=108			322/353/345/5=1025			31/166		181/150		34/26/17/1=78			251/244/261/4=760		
Opponents	35/175		228/193		32/39/33/2=106			418/406/378/21=1223			31/147		198/167		25/33/32/1=91			347/352/320/8=1027		
Goaltenders	GP-GS	MIN	GA	Saves	Shts	Save%	GAA	Record	Win%	SO	GP	MIN	GA	Saves	Shts	Save%	GAA	Record	Win%	
Britni Kehler	34-33	2028:33	94	1064	1158	.919	2.78	16-15-2	.470	5	27	1626:49	84	897	981	.914	3.10	12-13-2	.444	
Katerina Geertsen	3-2	95:59	12	53	65	.815	7.50	0-2-0	.000	0	2	69:10	7	39	46	.848	6.07	0-1-0	.000	
EMPTY NET	25-0	2:14	0		0						8	4:18	0		0					
MSU	35-0	2126:46	106	1117	1223	.913	2.99	16-17-2	.457	5	28	1697:43	91	936	1027	.911	3.22	12-14-2	.428	
Opponents	35-0	2126:46	108	917	1025	.895	3.05	17-16-2	.486	3	28	1697:43	78	682	760	.897	2.76	14-12-2	.500	



2007-08 MINNESOTA STATE HOCKEY

2006-07 Game Summaries

Game 1 • Robert Morris • 10.1.06 All Seasons Arena • 268

RM	0	0	0	= 0
MSU	1	1	4	= 6
1st	MSU - Fisher (Macy)	08:17		
2nd	MSU - Macy (Fisher)	14:58		
3rd	MSU - Needham (Vis)	05:29		
	MSU - Vis (Clark, Stohr)	07:56		
	MSU - Fisher (Macy, Vis)	17:00		
	MSU - Macy (Needham, Stohr)	19:48		

MSU - SOG: 60; PP - 1-7; P-Min: 8/16
RM - SOG: 20; PP - 0-7; P-Min: 8/16
Goaltenders - MSU Kehler (8-8-4 = 20), 60:00
RM - Rossi (14-24-16= 54), 60:00

Game 2 • Minnesota Duluth • 10.06.06 All Seasons Arena • 255

UMD	0	3	0	= 3
MSU	0	0	1	= 1
2nd	UMD - Blais (Marin, Koizumi)	02:16		
	UMD - Marin (Blais, Koizumi)	10:21		
	UMD - Marin (Sales, Trepanier)	18:37		
3rd	MSU - Lee (Helminen)	18:31		
	MSU - SOG: 25; PP - 1-3; P-Min: 5/21			
	UMD - SOG: 31; PP - 2-4; P-Min: 3/6			
	Goaltenders - MSU Kehler (11-10-7 = 28), 60:00			
	UMD - Martin (7-10-7 = 24), 60:00			

Game 3 • Minnesota Duluth • 10.07.06 All Seasons Arena • 172

UMD	2	3	1	= 6
MSU	0	1	0	= 1
1st	UMD - Marin (Holmlöv, Koizumi)	04:16		
	UMD - Tuominen (Lanzl, Sales)	08:20		
2nd	UMD - Tuominen (Trepanier)	08:39		
	UMD - O'Toole (Trepanier, Tuominen)	09:40		
	MSU - Bunker (Lee)	13:02		
	UMD - Holmlöv (Koizumi, Rasmussen)	16:41		
3rd	UMD - Trepanier (O'Toole, Tuominen)	10:10		
	MSU - SOG: 28; PP - 0-9; P-Min: 9/18			
	UMD - SOG: 49; PP - 3-5; P-Min: 13/26			
	Goaltenders - MSU Kehler (20-13-10 = 43), 60:00			
	UMD - Schaublin (6-13-8 = 27), 60:00			

Game 4 • Minnesota • 10.13.06 Ritter Arena • 869

MSU	0	0	0	= 1
UM	1	1	2	= 4
1st	UM - (Blankenship (McKenzie)	07:40		
	MSU - Fisher (Unassisted)	11:01		
2nd	UM - Nichols (Graft, Wacker)	12:06		
3rd	UM - Graft (Nichols)	05:42		
	UM - Francis (Ross)	09:40		
	MSU - SOG: 22; PP - 1-6; P-Min: 2/4			
	UM - SOG: 38; PP - 0-2; P-Min: 6/12			
	Goaltenders - MSU Kehler (12-12-10 = 34), 60:00			
	UM - Chartier (8-5-8 = 21), 60:00			

Game 5 • Minnesota • 10.14.06 Ritter Arena • 1110

MSU	0	0	0	= 2
UM	1	1	2	= 5
1st	UM - McKenzie (Unassisted)	14:30		
2nd	MSU - Stohr (Bunker)	05:03		
	UM - Graft (Nichols, Miller)	08:08		
	MSU - Vis (Thibault, Buganski)	08:54		
	UM - Ross (Marvin)	19:00		
3rd	UM - Marvin (Gagnon, McKenzie)	07:27		
	UM - Nichols (Unassisted)	08:13		
	MSU - SOG: 26; PP - 0-5; P-Min: 5/10			
	UM - SOG: 35; PP - 0-5; P-Min: 5/10			
	Goaltenders - MSU Kehler (8-13-9 = 30), 60:00			
	UM - Chartier (4-8-12 = 24), 60:00			

Game 6 • North Dakota • 10.21.06 Ralph Engelstad Arena • 372

MSU	4	2	1	= 7
UND	0	0	0	= 0
1st	MSU - Buganski (Macy, Fisher)	00:28		
	MSU - Macy (Buganski)	02:51		
	MSU - Bunker (Fisher, Lee)	04:59		
	MSU - Lee (Bunker, Young)	14:20		
2nd	MSU - Mackley (Buganski, Helminen)	13:38		
	MSU - Fisher (Helminen)	18:16		
3rd	MSU - Lee (Fisher)	13:38		
	MSU - SOG: 33; PP - 0-8; P-Min: 12/24			
	UND - SOG: 29; PP - 0-10; P-Min: 10/20			
	Goaltenders - MSU - Kehler (10-10-9 = 24), 60:00			
	UND - Kirkham (6-0-0 = 6), 4:59; Karnik (4-9-7 = 20), 55:01			

Game 7 • North Dakota • 10.22.06 Ralph Engelstad Arena • 485

MSU	1	1	1	= 3
UND	0	0	0	= 0
1st	MSU - Lee (Macy, Bunker)	05:52		
2nd	MSU - Jednak (Lee)	13:09		
3rd	MSU - Needham (Fisher, Bunker)	14:26		
	MSU - SOG: 29; PP - 2-6; P-Min: 8/24			
	UND - SOG: 23; PP - 0-7; P-Min: 6/12			
	Goaltenders - MSU - Kehler (7-9-7 = 23), 60:00			
	UND - Kirkham (6-12-6 = 24), 51:08; Empty Net 00:02			
	Kirkham (0-0-2 = 2), 08:50			

Game 8 • Wisconsin • 11.3.06 All Seasons Arena • 315

UW	1	1	1	= 3
MSU	1	0	0	= 1
1st	UW - Keesley (Unassisted)	15:13		
	MSU Young (unassisted)	19:43		
2nd	UW - Sanders (Bauer, Bobbi-Jo Slusar)	3:38		
3rd	UW - Mikkelsen (unassisted)	8:43		
	MSU - SOG: 23; PP - 1-3; P-Min: 4-8			
	UW - SOG: 32; PP - 1-4; P-Min: 3-6			
	Goaltenders - UW - Vetter (8-9-5 = 22), 60:00			
	MSU - Kehler (17-3-9 = 29), 59:39 Empty Net 0:21			

Game 9 • Wisconsin • 11.4.06 All Seasons Arena • 215

UW	1	2	3	= 6
MSU	1	0	0	= 1
1st	UW - Zaugg (Bauer)	4:11		
	MSU - Fisher (Young, Helminen)	7:29		
2nd	UW - Mikkelsen (Bobbi Jo Slusar, Bauer)	14:11		
	UW - Monteleone (Hagen)	15:32		
3rd	UW - Bauer (Mikkelsen)	9:05		
	UW-Sanders(Bauer, Bobbie-Jo Slusar)	10:50		
	UW - Keesley (Mikkelsen, Morris)	11:55		
	UW - SOG: 59; PP - 4-7; P-Min: 5-10			
	MSU - SOG: 29; PP - 0-5; P-Min: 6-23			
	Goaltenders - UW - Vetter (11-9-8=28), 60:00			
	MSU - Kehler (13-25-8=46), 50:50			
	Geertsen (0-0-7=7), 9:10			

Game 10 • Wayne State • 11.10.06 SMU Ice Arena • 247

MSU	0	2	4	= 6
WSU	0	0	1	= 1
2nd	MSU - Fisher (Young)	12:02		
	MSU - Helminen (Macy)	18:34		
3rd	MSU - Lee (unassisted)	2:34		
	MSU - Macy (Sammy Jo Miller, Vis)	13:15		
	MSU - Boal (DiPietro)	15:50		
	WSU - Fisher (Helminen, Rosso)	18:11		
	MSU - SOG: 32; PP - 1-4; P-Min: 4-8			
	WSU - SOG: 26; PP - 0-3; P-Min: 5-10			
	Goaltenders - MSU - Kehler (13-6-6=25), 60:00			
	WSU - Thompson (6-6-14=26), 60:00			

Game 11 • Wayne State • 11.11.06 All Seasons Arena • 198

MSU	0	3	0	= 3
WSU	3	4	0	= 7
1st	WSU - Berzins (King, Vanderhoeven)	16:09		
	WSU - Jefferson (unassisted)	17:00		
	WSU - Boal (DiPietro, Vanderhoeven)	18:31		
2nd	WSU - DiPietro (Poyton)	4:21		
	MSU - Bunker (Lee)	6:42		
	WSU - Poyton (Burnett, Boal)	6:49		
	WSU - Burnett (King)	9:09		
	MSU - Macy (unassisted)	10:05		
	MSU - Macy (unassisted)	13:46		
	WSU - Hungle (Poyton)	16:32		
	MSU - SOG: 28; PP - 0-2; P-Min: 6-12			
	WSU - SOG: 32; PP - 2-6; P-Min: 2-4			
	Goaltenders - MSU - Geertsen (12-2-0=14), 26:4			
	MSU - Kehler (0-3-8=11), 33:11			
	WSU - Turcotte (6-7-12=25), 60:00			

Game 12 • Minnesota Duluth • 11.17.06 DECC • 604

MSU	1	2	2	= 5
UMD	1	2	2	= 5
1st	UMD - Koizumi (Marin, Waggoner)	13:52		
	MSU - Macy (Bunker, Lee)	18:36		
2nd	UMD - O'Toole (Holmlöv)	1:32		
	MSU - Needham (Stohr, Vis)	3:04		
	MSU - Macy (unassisted)	5:10		
	UMD - Koizumi (Blais, Tuominen)	8:15		
3rd	UMD - Koizumi (Marin, Holmlöv)	1:52		
	MSU - Needham (Clark, Stohr)	6:05		
	MSU - Vis (Helminen, Needham)	7:18		

UMD - Koizumi (Holmlöv)..... 19:52
MSU - SOG: 39; PP - 4-6; P-Min: 9-18
UMD - SOG: 44; PP - 1-7; P-Min: 8-16
Goaltenders - MSU - Kehler (13-13-10=39), 65:00
UMD - Schaublin (13-11-9-1=3), 65:00

Game 13 • Minnesota Duluth • 11.18.06 DECC • 751

MSU	3	1	1	= 5
UMD	1	1	1	= 3
1st	MSU - Macy (unassisted)	3:11		
	MSU - Fisher (Stohr)	5:26		
	UMD - Koizumi (Marin, Holmlöv)	8:38		
	MSU - Macy (Lee, Bunker)	16:51		
2nd	MSU - Fisher (unassisted)	12:03		
	UMD - Demule (Holmlöv, Murray)	16:32		
3rd	UMD - Tuominen (Holmlöv)	16:22		
	MSU - Helminen (Vis)	18:45		
	MSU - SOG: 25; PP - 1-3; P-Min: 6-12			
	UMD - SOG: 45; PP - 0-6; P-Min: 3-6			
	Goaltenders - MSU - Kehler (18-12-12=42), 60:00			
	UMD - Schaublin (-8-4-8=20), 60:00			

Game 14 • Ohio State • 11.24.06 All Seasons Arena • 300

OSU	1	0	0	= 2
MSU	0	1	0	= 1
1st	OSU - Heywood (Aldous, Bonhomme)	7:51		
2nd	MSU - Needham (unassisted)	4:32		
	OSU - Bonhomme (Keys, Peckels)	5:31		
	OSU - SOG: 26; PP - 0-5; P-Min: 8-16			
	MSU - SOG: 23; PP - 1-7; P-Min: 6-12			
	Goaltenders - OSU - Vanderveer (5-6-11=22), 60:00			
	MSU - Kehler (14-4-6=24), 60:00			

Game 15 • Ohio State • 11.25.06 All Seasons Arena • 317

OSU	1	0	3	= 4
MSU	2	1	0	= 3
1st	OSU - Keys (Peckels, Bonhomme)	4:45		
	MSU - Bunker (Macy, Buganski)	7:07		
	MSU - Young (Jednak, Fisher)	10:24		
2nd	MSU - Hewitt (Vis, Thibault)	3:32		
3rd	OSU - Keys (Bowman, Chesson)	9:12		
	OSU - Bonhomme (Keys, Bowman)	9:57		
	OSU - Skarda (Bowman, Chesson)	12:54		
	OSU - SOG: 42; PP - 3-5; P-Min: 5-21			
	MSU - SOG: 22; PP - 0-4; P-Min: 6-12			
	Goaltenders - OSU - Vanderveer (4-5-10=19), 60:00			
	MSU - Kehler (12-13-13=38), 58:54; Empty Net 1:06			

Game 16 • St. Cloud State • 12.01.06 National Hockey Center • 354

MSU	1	1	1	= 3
SCSU	1	1	0	= 2
1st	SCSU - Fast (McCarthy, Pezon)	01:53		
	MSU - Vis (Snyder)	06:47		
2nd	SCSU - Roberts (Clarkson)	01:14		
	MSU - Bunker (Macy)	08:09		
3rd	MSU - Stohr (Fisher)	06:47		
	MSU - SOG: 22; PP - 2-7; P-Min: 4-8			
	SCSU - SOG: 45; PP - 0-3; P-Min: 8-16			
	Goaltenders - MSU - Kehler (16-13-14=43), 60:00			
	SCSU - Lizee (4-7-8=19), 58:21; Empty Net 1:39			

Game 17 • St. Cloud State • 12.02.06 National Hockey Center • 276

MSU	1	1	0	= 2
SCSU	0	3	0	= 3
1st	MSU - Stohr (Fisher, Miller)	06:27		
2nd	SCSU - Clarkson (Fast, Pazon)	05:44		
	SCSU - Hogan (Fast, Schroeder)	07:49		
	SCSU - Roberts (Clarkson, Maguet)	12:50		
	MSU - Lee (Buganski)	19:43		
	MSU - SOG: 32; PP - 0-4; P-Min: 7-14			
	SCSU - SOG: 32; PP - 2-7; P-Min: 4-8			
	Goaltenders - MSU - Kehler (5-7-0=12), 34:02; Empty Net 00:07			
	Kehler (0-3-14=17), 25:47; Empty Net 00:04			
	SCSU - Newell (13-1-0=14), 26:48; Empty Net 00:35			
	Newell (0-12-4=16), 15:40; Empty Net 00:06			
	Newell (0-0-0=0), 16:51			

Game 18 • Bemidji State • 12.8.06 All Seasons Arena • 289

BSU	2	2	1	= 5
MSU	1	1	0	= 2
1st	MSU - Stohr (Thibault, Mackley)	04:40		
	BSU - Sadler (Unassisted)	06:42		
	BSU - Hart (Eckbrecht, Bambrough)	16:07		
2nd	BSU - Leopold (Balcom)	10:32		
	BSU - Robinson (Pullar)	12:43		





2006-07 Opponents



Oct. 5-6, Bemidji, Minn. • Feb. 8-9, Mankato, Minn.

Location: Bemidji, Minn.
Enrollment: 5,020
Founded: 1919
Nickname: Beavers
Colors: Green and White
Arena: John S. Glas Fieldhouse (2,358)
Press Box Phone: (218) 755-3700
President: Dr. Jon Quistgaard
Athletic Director: Dr. Rick Goeb
Head Coach: Steve Sertich (Colorado College '74)
Office Phone: (218) 755-4108
Record at BSU: 11-20-5 (1 year)
Overall Record: 11-20-5 (1 year)
Assistant Coaches: Heather Farrell, Shane Venken
Hockey SID: Cedrique Flemming
SID Phone: (218) 755-2763
SID Fax: (218) 755-3898
SID E-mail: cflemming@bemidjistate.edu
2006-07 Record: 11-20-5
Conference Record: 9-15-4 (6th)
Lettermen Returning/ Lost: 16/7
Top Players: Kelly Hart (Sr., F, 7-14-21),
..... Kate Robinson (Sr., F, 8-9-17),
..... Emily Brookshaw (Jr., G, 10-20-5, 904, 3.03)
Maverick Record vs. BSU: 15-13-6



University of Connecticut

Oct. 12-13, Storrs, Conn.

Location: Storrs, Conn.
Enrollment: 28,083
Founded: 1881
Nickname: Huskies, UConn
Colors: National Flag Blue (Navy) & White
Arena: Mark Edward Freitas Ice Forum (2,000)
Press Box Phone:
President: Dr. Michael Hogan
Athletic Director: Jeffrey Hathaway
Head Coach: Heather Linstad (Providence, '89)
Office Phone: (860) 486-0612
Record at UConn: 79-118-25 (7 years)
Overall Record: 240-189-52 (15 years)
Assistant Coaches: Jamie Totten, Becky Irvine
Hockey SID: Kristen Altieri
SID Phone: (860) 486-4707
SID Fax: (860) 486-5085
SID E-mail: kristen.altieri@uconn.edu
2006-07 Record: 17-15-3
Conference Record (Hockey East): 12-7-2 (4th)
Lettersmen Returning/ Lost: 196/
Top Players: Jaclyn Hawkins (Sr., F, 18-18-36),
 Dominique Thibault (So., F, 14-11-25),
 Brittany Wilson (Jr., G, 17-14-3, 924, 2.34)
Maverick Record vs. Connecticut: 2-0-2



University of Wisconsin

Oct. 26-27, Madison, Wis. • Jan. 4-5, Mankato, Minn.

Location:	Madison, Wis.
Enrollment:	41,466
Founded:	1848
Nickname:	Badgers
Colors:	Cardinal and White
Arena:	Kohl Center (15,237)
Press Box Phone:	(608) 265-4336
Chancellor:	John Wiley
Athletic Director:	Barry Alvarez
Head Coach:	Mark Johnson (Wisconsin '94)
Office Phone:	(608) 262-0101
Record at UW:	147-28-14 (five years)
Overall Record:	147-28-14 (five years)
Assistant Coaches:	Tracey Cornell and Dan Koch
Hockey SID:	Adam Augustine
SID Phone:	(608) 262-2255
SID Fax:	(608) 262-8184
SID E-mail:	ARA@athletics.wisc.edu
2006-07 Record:	36-4-1
Conference Record:	23-1-4 (1st)
Lettermen Returning/Lost:	15/7
Top Players:	Meghan Duggan (So., F, 26-26-52) Jinnelle Zaugg (Sr., F, 29-21-50) Jessie Vetter (Jr., G, 20-1-3, 953, 0.83)
Maverick Record vs. UW:	0-31-1



St. Cloud State University

Nov. 1/Feb. 2, Mankato, Minn • Nov.3/Feb. 1, St. Cloud, Minn.
Location: St. Cloud, Minn.
Enrollment: 16,000
Founded: 1869
Nickname: Huskies
Colors: Cardinal and Black
Arena: National Hockey Center (5,371)
Press Box Phone: (320) 255-2099
President: Dr. Earl H. Potter III
Athletic Director: Dr. Morris Kurtz
Head Coach: Jeff Giesen (St. Cloud State, '93)
Office Phone: (320) 308-4806
Record at SCSU: 12-18-7
Overall Record: 12-18-7
Assistant Coaches: Jennifer Kranz, Jason Johnson
Hockey SID: Celest Stang
SID E-mail: crstang@stcloudstate.edu
SID Phone: (320) 308-2141
SID Fax: (320) 308-2099
2006-07 Record: 12-18-7
Conference Record: 7-16-5 (7th)
Lettermen Returning/Lost: 20/6
Top Players: Holly Roberts (Fr, F, 18-17-35),
Laura Fast (Jr, F, 16-14-30),
Lauri St. Jacques (Sr., G, 6-9-1, 884, 3.37)
Maverick Record vs. SCSU: 15-16-3



The Ohio State University

Nov. 9-10 Mankato, Minn. • Feb. 15-16, Columbus, Ohio

Location: Columbus, Ohio
Enrollment: 57, 748
Founded: 1870
Nickname: Buckeyes
Colors: Scarlet and Gray
Arena: OSU Ice Rink (1,415)
Press Box Phone: (614) 688-0658
President: Gordon Gee
Athletic Director: Eugene Smith
Head Coach: Jackie Barto (Providence, 84)
Office Phone: (614) 292-7073
Record at OSU: 122-143-28 (8 years)
Overall Record: 192-196-38 (13 years)
Assistant Coaches: Catherine Hanson, Katie Lachapelle
Hockey SID: Courtney Walerius
SID E-mail: walerius.2@osu.edu
SID Office Phone: (614) 292-0088
SID Fax: (614) 292-8547
2006-07 Record: 20-13-4
Conference Record: 13-11-4 (4th)
Letterman Returning/Lost: 167
Top Players: Erin Keys (Sr., F, 22-26-48),
Tessa Bowman (Sr., D, 14-22-36),
Erika Vanderveer (Sr., G, 18-10-3, .920, 2.19)
Maverick Record vs. OSU: 3-30-3



2007-08 MINNESOTA STATE HOCKEY

2006-07 Opponents



Minnesota Duluth

Nov. 23-24, Duluth, Minn. • Jan. 11-12, Mankato, Minn.

Location: Duluth, Minn.
Enrollment: 10,500
Founded: 1895
Nickname: Bulldogs
Colors: Maroon and Gold
Arena: Duluth Entertainment and Convention Center (5,301)
Press Box Phone: (218) 727-7939
Chancellor: Dr. Kathryn Martin
Athletic Director: Bob Nielson
Head Coach: Shannon Miller (Saskatchewan '85)
Office Phone: (218) 726-8164
Record at UMD: 200-57-24 (8 years)
Overall Record: 200-57-24 (8 years)
Assistant Coaches: Julie Chu, Caroline Ouellette, Robb Stauber
Hockey SID: Kelly Grgas-Wheeler
SID E-mail: kgrgaswh@d.umn.edu
SID Office Phone: (218) 726-7465
SID Fax: (218) 726-6529
2006-07 Overall Record: 24-11-4
Conference Record: 19-6-3 (2nd)
Lettermen Returning/Lost: 15/7
Top Players: Noemie Marin (Sr., F, 24-29-53),
Jessica Koizumi (Sr., F, 22-18-40),
Riita Schaublin (Sr., G, 13-4-2, .930, 1.75)
Maverick Record vs. UMD: 3-27-3



Miller



North Dakota

Nov. 30/Dec. 1, Grand Forks, N.D. • Feb. 22-23, Mankato, Minn.

Location: Grand Forks, N.D.
Enrollment: 12,954
Founded: 1883
Nickname: Fighting Sioux
Colors: "Kelly" Green and White
Arena: Ralph Engelstad Arena
Press Box Phone: (701) 777-3571 or 3572
President: Dr. Charles Kupchella
Athletic Director: Tom Buning
Head Coach: Brian Idalski
Office Phone: (701) 777-6490
Record at UND: First year
Overall Record: First year
Assistant Coaches: Grant Kimball, Maria Lewis
Hockey SID: Brandon Wolf
SID Phone: (701) 777-6743
SID Fax: (701) 777-4352
SID E-mail: brandon.wolf@und.nodak.edu
2006-07 Record: 3-31-2
Conference Record: 0-27-1(8th)
Lettermen Returning/ Lost: 17/3
Top Players: Samantha Bowers, Jr., F (5 G, 3 A, 8 Pts),
Randi Motsko, Jr., F (5 G, 3 A, 8 Pts),
Brittany Kirkham, So., G (3-29-2, .887, 3.64)
Maverick Record vs. UND: 13-4-1



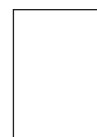
Idalski



University of Minnesota

Dec. 7-8, Mankato, Minn. • Jan. 25-26, Minneapolis, Minn.

Location: Minneapolis, Minn.
Enrollment: 50, 402
Founded: 1851
Nickname: Golden Gophers
Colors: Maroon and Gold
Arena: Ridder Arena (3,400)
Press Box Phone: (612) 625-6900
President: Robert Bruininks
Athletic Director: Joel Maturi
Interim Head Coach: Brad Frost (Bethel, '96)
Office Phone: 612-625-0188
Record at UM: First Year
Overall Record: First Year
Assistant Coaches: Laura Slominski, Tom Osiecki
Hockey SID: Michelle Traen
SID E-mail: traen001@umn.edu
SID Phone: (612) 624-0522
SID Fax: (612) 625-0359
2006-07 Record: 23-12-1
Conference Record: 17-10-1 (3rd)
Lettermen Returning/Lost: 16/5
Top Players: Gigi Marvin (Jr., F, 18-20-38),
Bobbi Ross (Jr., F, 19-16-35),
Brittany Chartier (Jr., G, 12-5-1, .899, 2.24)
Maverick Record vs. UM: 3-35-2



Frost



Robert Morris

Dec. 29-30, Pittsburg, Pa.

Location: Moon Township, Pa.
Enrollment: 5,100
Founded: 1921
Nickname: Colonials
Colors: Blue & White with Red
Arena: RMU Island Sports Center (1,000)
Press Box Phone: (412) 397-4907
President: Gregory G. Dell'Omo, Ph.D.
Athletic Director: Craig Coleman, M.D.
Head Coach: Nate Handrahan (Niagara, 2000)
Office Phone: (412) 397-4478
Record at MC: 11-22-2
Overall Record: 11-22-2
Assistant Coaches: Scott Spencer, Raffi Wolf
Hockey SID: Erik Kaminski
SID E-mail: sidga02@rmu.edu
SID Phone: (412) 262-8541
SID Fax: (412) 262-8557
2006-07 Record: 11-22-2
Conference Record (CHA): 1-11-0 (4th)
Lettermen Returning/Lost: 18/5
Top Players: Morgan Beikirch (Jr., F, 11-12-23),
Kristen Miles (Sr., F, 15-9-24),
Brianna McLaughlin (Jr., G, 8-17-2, .908, 3.28)
Maverick Record vs. RMU: 1-0-0



Handrahan



2008 WCHA Women's Championship Information

Tickets go on sale Nov. 5, 2007 at
10:00 am CT at the University of
Minnesota Duluth Ticket Office.

Three-game season tickets for the
women's championship will be
available in three prices:
\$20 for a reserved seat
\$18 for general admission
\$15 for seniors and youth
(age 18 and under)

Beginning Nov. 5, tickets may be
purchased by calling the UMD
Athletic Ticket Office at
218-726-8595.



2007-08 MINNESOTA STATE HOCKEY

All-Time Members & Team Awards

All-Time Team Members

Name (games played, goals-assists--total) Years Played

Kim Anderson (55 gp, 1-6--7)	1998-2000
Katy Battis (29 gp, 14-17--21)	1998-99
Jenny Boutain (28 gp, 3-6--9)	1998-99
Kala Buganski (32 gp, 5-10--15)	2006-SA
Kristina Bunker (106 gp, 20-41--61)	2004-SA
Dana Burgos (18 gp, 0-0--0)	1998-2000
Courtney Canniff (46 gp, 5-6--11)	2000-02
Ida Clark (35 gp, 0-5--5)	2006-SA
Autumn Conway (93 gp, 12-26--38)	2003-06
Kim Corona (64 gp, 29-20--49)	1998-2000
Candice Denigan (7gp, 1-2--3)	1998-99
Nicki DiCasmirro (1gp, 0-0--0)	1998-99
Amy Egli (96 gp, 8-10--18)	2000-03
Maggie Fisher (71 gp, 33-24--57)	2005-SA
Kirsten Frederickson (22 gp, 3-2--5)	1998-99
Ryann Geldner (113 gp, 32-28--60)	1998-02
Jennifer George (3 gp, 0-1--1)	1999-2000
Nikki Grage (5 gp, 1-0--1)	1998-99
Erin Hafermann (99 gp, 16-28--44)	1998-02
Katie Hainrich (74 gp, 19-16--35)	2002-05
Kristin Hallett (14 gp, 0-0--0)	2003-05
Shannon Heimerl (35 gp, 0-0--0)	2000-01
Jodi Helminen (99 gp, 13-27--40)	2004-SA
Cara Hendry (66 gp, 4-7--11)	2003-05
Andrea Henjum (33 gp, 1-1--2)	2000-02
Andrea Herold (30 gp, 3-3--6)	2005-07
Jenna Hewitt (23 gp, 1-0--1)	2005-SA
Sandra Hood (81 gp, 3-7--10)	2000-03
Kate Ingram (52 gp, 16-9--25)	1998-2000
Abby Jacobs (8 gp, 0-0--0)	2001-02
Laurie Jacobs (1 gp, 0-0--0)	2000-2001
Lyndsay James (79 gp, 6-4--10)	2002-05
Megan Jedinak (122 gp, 3-8--11)	2003-07
Andrea Jensrud (63 gp, 6-13--19)	2002-04
Jen Jonsson (135 gp, 4-11--15)	2002-06
Megan Keator (25 gp, 4-3--7)	1998-2000
Jenny Kern (59 gp, 0-2--2)	2000-02
Jessica Knight (4 gp, 0-0--0)	2006-07
Kristina Koga (136 gp, 9-6--15)	2000-05
Jackie Koury (55 gp, 4-2--6)	1998-2001
Mandy Krause (94 gp, 4-12--16)	1998-02
Christina Lee (35 gp, 15-13--28)	2006-SA
Brittany Mackley (101 gp., 5-5--10)	2004-SA
Lindsay Macy (34, 16-17--33)	2006-SA
Nicole Magnuson (61 gp, 3-8--11)	2001-03
Sheri Maissoneuve (61 gp, 10-13--23)	2000-02
Lindsay McCulloch (110 gp, 7-13--20)	2001-06
Ashleigh Miller (129 gp, 27-19--46)	1998-02
Sammy Miller (132 gp, 3-9--12)	2003-07
Heather Nadeau (99 gp, 3-17--20)	1998-2001
Noelle Needham (97 gp, 19-12--31)	2004-07
Felicia Nelson (26 gp, 10-4--14)	2005-06
Devon Nichols (64 gp, 16-29--45)	2002-04
Jenny Oldefendt (11 gp, 0-0--0)	2000-01
Amanda Osborn (135 gp, 20-25--45)	2000-04

Natalie Otten (40 gp, 2-2--4)	1999-2001
Keely Parrish (1 gp, 0-0--0)	2000-01
Jasey Porter (6 gp, 0-0--0)	2003-04
Jody Rankin (89 gp, 1-7--8)	1998-02
Anne Rickbeil (114 gp, 1-9--10)	1999-03
Kathleen Rosso (32 gp, 0-3--3)	2006-SA
Lindey Roy (16 gp, 0-0--0)	2000-01
Holly Synder (31 gp, 0-5--5)	2006-SA
Richelle St. Croix (124 gp, 3-8--11)	2003-07
Melanie Salatino (103 gp, 35-28--63)	2002-05
Cara Samuelson (131 gp, 22-27--49)	1998-02
Jessica Schmidt (19 gp, 0-1--1)	1998-2000
Alexis Schmidt-Pederson (26 gp, 5-7--12)	1998-99
Tiffany Searles (28 gp, 3-5--8)	1998-99
Tina Serafin (30 gp, 11-15--26)	1998-02
Amber Sharratt (138 gp, 5-27--32)	2002-06
Robyn Shaw (61 gp, 1-4--5)	2001-03
Michelle Sikich (29 gp, 18-21--39)	1998-99
Kearstin Solberg (128 gp, 19-23--42)	2001-05
Michelle Stahl (5 gp, 0-1--1)	1998-99
Tristin Stephenson (133 gp, 32-35--67)	1999-03
Amanda Stohr (97 gp, 23-26--49)	2004-SA
Andreanne Thibault (101 gp, 4-7--11)	2004-SA
Elaine Topolnisky (70 gp, 6-6--12)	2001-04
Shera Vis (136 gp, 23-25--48)	2003-07
Kerri Wallace (30 gp, 2-11--13)	2004-05
Brittany Wiger (17 gp, 0-0--0)	2003-04
Alycia Wilson (61 gp, 9-8--17)	2003-06
Ashley Young (36 gp, 6-10--16)	2005-SA

Goaltenders

Name (games played, W-L-T, sv %, GAA)Years Played
Katie Beauduy (48 gp, 11-31-3, .883, 4.07) .1999-03
Laura Brennan (32 gp, 5-21-6, .908, 2.96) ...2003-06
Katerina Geertsen (3 gp, 0-2-0, .815, 7.50)...2006-SA
Sarah Harms (6 gp, 1-4-0, .808, 8.12)1998-99
Melissa Jackson (10 gp, 6-3-0, .876, 2.78) ...1998-99
Britni Kehler (75 gp, 32-36-6, .918, 2.70) .. 2004-SA
Jennie Padgett (39 gp, 9-25-1, .872, 4.35) 1998-2000
Michelle Schaefer (2 gp, 0-0-0, .778, 4.69)1998-2000
Shari Vogt (103 gp, 26-68-9, .916, 3.18)2000-04

WCHA Awards

WCHA Co-Student Athlete of the Year

1999-00 Katie Beauduy

All-WCHA First Team

2002-03 Shari Vogt
2003-04 Shari Vogt

WCHA All-Rookie Team

2004-05 Kerri Wallace
2005-06 Maggie Fisher
2006-07 Holly Snyder

WCHA Coach of the Year

2003-04 Jeff Vizenor



Snyder

Team Awards

Team Captains

1998-99	Kim Corona
	Michelle Sikich
1999-00	Erin Hafermann
	Mandy Krause
2000-01	Jody Rankin
	Tina Serafin
2001-02	Erin Hafermann
	Tina Serafin
2002-03	Shari Vogt
	Shari Vogt
	Amy Egli
	Anne Rickbeil
2003-04	Shari Vogt
	Amanda Osborn
2004-05	Jen Jonsson
	Lindsay McCulloch
	Autumn Conway
2005-06	Jen Jonsson
	Lindsay McCulloch
2006-07	Shera Vis
	Jodi Helminen

Most Improved

1998-99	Kiri Fredrickson
1999-00	Jody Rankin
2000-01	Amanda Osborn
	Andrea Henjum
2001-02	Amy Egli
	Amber Hansen
2002-03	Jen Jonsson
2003-04	Kristin Hallett
2004-05	Casey Preston
2005-06	Brittany Mackley
2006-07	Shera Vis/Kathleen Rosso

Maverick Pride

2001-02	Amber Hansen
2002-03	Amber Sharratt
2003-04	Amanda Osborn
2004-05	Kristina Koga
2005-06	Lindsay James
2006-07	Sammy Miller

MVP

1998-99	Jennie Padgett
1999-00	Ashleigh Miller
2000-01	Shari Vogt
2001-02	Shari Vogt
2002-03	Shari Vogt
2003-04	Shari Vogt
2004-05	Melanie Salatino
2005-06	Jodi Helminen
2006-07	Britni Kehler

BW3 Star of the Year

1998-99	Ashleigh Miller
1999-00	Ashleigh Miller
2000-01	Shari Vogt
2001-02	Shari Vogt
2002-03	Tristin Stephenson
2003-04	Shari Vogt
	Melanie Salatino
2004-05	Melanie Salatino
2005-06	Britni Kehler
2006-07	Britni Kehler

Tiffany Searles Memorial Award

2000-01	Jody Rankin
2001-02	Tina Serafin
2002-03	Tristin Stephenson
2003-04	Beth Peppersack (equip. mgr.)
2004-05	Beth Peppersack (equip. mgr.)
2005-06	Amber Sharratt/Noelle Needham
2006-07	Shera Vis

Rookie of the Year

2001-02	Lindsay McCulloch
2002-03	Andrea Jensrud
2003-04	Autumn Conway
2004-05	Amanda Stohr
2005-06	Maggie Fisher
2006-07	Christina Lee



Lee



Helminen



Rosso



Kehler

2007-08 MINNESOTA STATE HOCKEY

Team & Coach Records



Team Records

Period

Most Goals: 8 (Feb. 26, 1999, 12-0 victory over Bemidji State in Bemidji, Minn.)
Most Assists: 9 (twice, most recently on Feb. 26, 1999, first period, 12-0 victory over Bemidji State in Bemidji, Minn.)
Most Shots: 30 (First Period, Feb. 20, 1999, 9-0 victory over Bemidji State in Mankato, Minn.)
Fewest Shots Allowed: 1 (three times, most recently first period, Dec. 30, 2006, 4-0 victory over Vermont in Mankato, Minn.)

Game

Most Goals: 14 (Feb. 24, 1999, 14-0 victory over St. Thomas in Minneapolis, Minn.)
Most Goals Allowed: 12 (Oct. 18, 2002, 12-1 loss to Minnesota Duluth in Mankato, Minn.)
Most Assists: 17 (Feb. 24, 1999, 14-0 victory over St. Thomas in Minneapolis, Minn.)
Most Points: 31 (Feb. 24, 1999, 14-0 victory over St. Thomas in Minneapolis, Minn.)
Most Shots: 77 (Feb. 24, 1999, 14-0 victory over St. Thomas in Minneapolis, Minn.)
Fewest Shots Attempted: 6 (three times)
Fewest Shots Allowed: 6 (Feb. 26, 1999, 12-0 victory over Bemidji State in Bemidji, Minn.)
Most Power Play Goals: 5 (Jan. 29, 1999, 11-0 victory over Minnesota Duluth in Mankato, Minn.)
Most Short Handed Goals: 2 (twice, most recently on Jan. 9, 2000, in the 7-3 victory over Gustavus)
Best Shooting Percentage: 28.6% (12 goals on 42 shots, Feb. 26, 1999, 12-0 victory over Bemidji State in Bemidji, Minn.)

Season

Most Games: 36, 2005-06
Most Wins: 16, 2003-04, 2006-07
Fewest Wins: 2, 2000-01
Most Consecutive Wins: 7, 2006-07
Most Losses: 31, 200-01
Fewest Losses: 14, 2003-04
Most Consecutive Losses: 14, 2000-01
Most Ties: 6, 2004-05
Fewest Ties: 0, 1998-99
Most Consecutive Ties: 2, 2002-03, 2004-05
Most Overtime Games: 6, 2003-04, 2004-05, 2005-06
Fewest Overtime Games: 1, 1998-99
Most Consecutive Overtime Games: 2, 2001-02, 2002-03, 2003-04, 2004-05, 2005-06
Most Consecutive Games Without a Loss: 7, 2006-07
Most Consecutive Games Without a Win: 24, 2000-01
Most Consecutive Games Without a Tie: 29, 1998-99
Most Consecutive Games Without an Overtime: 29, 2006-07

Most Goals: 114, 1998-99
Most Assists: 146, 1998-99, 2006-07
Most Points: 260, 1998-99
Most Shots Taken: 1025, 2006-07
Most Goals Per Game: 3.93, 1998-99
Most 10-Goal Games: 4, 1998-99
Most Power-Play Goals: 34, 2006-07
Most Short-Handed Goals: 8, 2006-07
Most Goals Against: 165, 1999-2000
Most Penalty Minutes: 482, 2006-07
Most Shutouts: 6, 1998-99
Most Consecutive Shutouts: 3, 1998-99
Best W-L Percentage: .529, 2003-04

Individual Records

Game

Most Goals: 4 (four times, most recently Melanie Salatino on Oct. 17, 2003 vs. North Dakota)
Most Assists: 4 (three times, most recently Kristina Bunker on Dec. 31, 2006, 7-1 victory over Vermont in Mankato, Minn.)
Most Points: 5 -- 4 goals and 1 assist, Kim Corona (Jan. 29, 1999, 11-0 victory at Augsburg at Minneapolis, Minn.)
Most Power Play Goals: 3, Melanie Salatino (Oct. 17, 2003, 5-2 win over North Dakota)
Most Short Handed Goals: 2, Michelle Sikich (Jan. 23, 11-0 victory at Augsburg at Minneapolis, Minn.)
Most Shots: 16, Michelle Sikich (Feb. 20, 1999, 9-0 victory over Bemidji State in Mankato, Minn.)
Best Plus/Minus Rating: +6 (twice, most recently Erin Hafermann on Feb. 26, 1999, 12-0 victory over Bemidji State in Bemidji, Minn.)
Most Saves In A Game: 66, Shari Vogt (Jan. 11, 2002, vs. Minnesota-Duluth)

Season

Most Consecutive Games With A Point: 7, Kristina Bunker (Nov. 5-Nov. 27, 2004)
Most Consecutive Games With A Goal: 5, Michelle Sikich (Jan. 16 - Jan. 29, 1999)



Senior forward **Kristina Bunker** shares the individual record of most assists in a game (4) and owns the season record of most consecutive games with a point (7).



Kim Corona holds the record for most points in a game with five. She scored four goals and added one assist in an 11-0 win over Augsburg in 1999.

Minnesota State Women's Hockey Year-by-Year

Year	Head Coach	GP	W	L	T	Pct
1998-99	Todd Carroll	29	14	25	0	0.483
1999-00	Todd Carroll	35	8	25	2	0.257
2000-01	Todd Carroll	35	2	31	2	0.086
2001-02	Jeff Vizenor	32	4	26	2	0.156
2002-03	Jeff Vizenor	34	10	21	3	0.338
2003-04	Jeff Vizenor	34	16	14	4	0.529
2004-05	Jeff Vizenor	35	9	20	6	0.343
2005-06	Jeff Vizenor	36	11	21	4	0.361
<u>2006-07</u>	<u>Jeff Vizenor</u>	<u>35</u>	<u>16</u>	<u>17</u>	<u>2</u>	<u>0.486</u>
Total		305	90	190	25	0.336
Carroll Coaching Totals:		99	24	71	4	0.263
Vizenor Coaching Totals:		206	66	119	21	0.371



2007-08 MINNESOTA STATE HOCKEY

Maverick Record Book



Top Game Performances

Points	
1. Kim Corona vs. Augsburg (1/23/99)	5
2. 15 tied with	4

Goals	
1. Kim Corona vs. Augsburg (1/23/99)	4
Tristin Stephenson vs. Augsburg (12/12/99)	4
Amanda Osborn vs. St. Cloud State (11/15/02)	4
Melanie Salatino vs. North Dakota (10/17/03)	4
5t. 6 tied with	3

Assists	
1. Katy Battis vs. St. Thomas (2/24/99)	4
Michelle Sikich vs. Bemidji St. (2/26/99)	4
Kristina Bunker vs. Vermont (12/31/06)	4
4t. 13 tied with	3

Shots	
1. Michelle Sikich vs. Bemidji St. (2/20/99)	16
2. Michelle Sikich at St. Thomas (2/24/99)	14
3. Lindsay Macy at Ohio State (2/24/07)	11
4t. 3 tied with	10

Shots Faced	
1. Shari Vogt vs. Minnesota Duluth (10/19/02)	69
2. Shari Vogt vs. Minnesota Duluth (1/11/02)	66
3. Shari Vogt vs. Minnesota Duluth (1/25/03)	64
4. Shari Vogt vs. Minnesota (1/14/01)	62
5. Jennie Padgett vs. Harvard (11/7/98)	61
Shari Vogt vs. Minnesota (12/8/02)	61

Saves	
1. Shari Vogt vs. Minnesota Duluth	63
2. Shari Vogt vs. Minnesota (1/14/01)	59
Shari Vogt vs. Minnesota Duluth (1/11/02)	59
4. Shari Vogt vs. Minnesota (12/8/02)	58
Shari Vogt vs. Minnesota Duluth (1/25/03)	58

Top Season Performances

Points	
1. Michelle Sikich (1998-99)	39
2. Maggie Fisher (2006-07)	34
3. Lindsay Macy (2006-07)	33
4. Tristin Stephenson (1999-00)	32
5. Cara Samuelson (1998-99)	30
Devon Nichols (2003-04)	30

Goals	
1. Michelle Sikich (1998-99)	18
Melanie Salatino (2003-04)	18
3. Kim Corona (1999-00)	17
Maggie Fisher (2006-07)	17
5. Maggie Fisher (2005-06)	16
Lindsay Macy (2006-07)	16

Assists	
1. Michelle Sikich (1998-99)	21
Devon Nichols (2003-04)	21
3. Kristina Bunker (2006-07)	18
4t. 5 tied with	17

Power-Play Goals

1. Melanie Salatino (2003-04)	11
2. Christina Lee (2006-07)	8
3. Tristin Stephenson (1999-00)	7
Noelle Needham	7
5. Michelle Sikich (1998-99)	6

Game-Winning Goals

1. Maggie Fisher (2006-07)	5
2t. 6 tied with	3

Shots	
1. Lindsay Macy (2006-07)	148
2. Michelle Sikich (1998-99)	146
3. Melanie Salatino (2003-04)	137
4. Christina Lee (2006-07)	135
5. Kristina Bunker (2006-07)	120

Shooting Percentage (minimum 1 shot/game)

1. Ryann Geldner (1998-99)	295
2. Kim Corona (1998-99)	167
3. Kim Corona (1999-00)	162
4. Maggie Fisher (2006-07)	160
5. Ashleigh Miller (1998-99)	153

Plus/Minus Rating

1. Katy Battis (1998-99)	+15
2. Jackie Koury (1998-99)	+14
3. Shera Vis (2006-07)	+12
4. Alexis Schmidt-Pederson (1998-99)	+10
5. Lindsay Macy (2006-07)	+7

Goaltenders

Wins	
1. Britni Kehler (2006-07)	16
2. Shari Vogt (2003-04)	15
3. Britni Kehler (2005-06)	10
4. Jennie Padgett (1998-99)	7
5. 4 tied with	6

Shots Faced	
1. Britni Kehler (2006-07)	1158
2. Shari Vogt (2003-04)	1103
3. Shari Vogt (2002-03)	1015
4. Shari Vogt (2001-02)	913
5. Shari Vogt (2000-01)	888

Saves	
1. Britni Kehler (2006-07)	1064
2. Shari Vogt (2003-04)	1030
3. Shari Vogt (2002-03)	932
4. Shari Vogt (2001-02)	836
5. Shari Vogt (2000-01)	792

Save Percentage	
1. Shari Vogt (2003-04)934
2. Britni Kehler (2005-06)923
3. Britni Kehler (2006-07)919
4. Shari Vogt (2002-03)918
5. Shari Vogt (2001-02)916

Goals Against Average	
1. Shari Vogt (2003-04)	2.26
2. Britni Kehler (2005-06)	2.50
3. Laura Brennan (2004-05)	2.74
4. Britni Kehler (2004-05)	2.86
5. Melissa Jackson (1998-99)	2.78
Britni Kehler (2006-07)	2.78

Minutes	
1. Britni Kehler (2006-07)	2028:33
2. Shari Vogt (2003-04)	1936:58
3. Britni Kehler (2005-06)	1514:37
4. Shari Vogt (2002-03)	1507:10
5. Shari Vogt (2001-02)	1438:32

Shutouts	
1. Britni Kehler (2006-07)	5
2. Britni Kehler (2005-06)	4
Jennie Padgett (1998-99)	4
4. Britni Kehler (2004-05)	3
5. Shari Vogt (2001-02)	2
Katie Beauduy (2002-03)	2
Laura Brennan (2004-05)	2

Top Career Performances

Games Played	
1. Amber Sharratt (2002-06)	138
2. Kristina Koga (2000-05)	136
Shera Vis (2003-07)	136
4. Jen Jonsson (2002-06)	135
Amanda Osborn (2000-04)	135
6. Tristin Stephenson (1999-03)	133

Points	
1. Tristin Stephenson (1999-03)	67
2. Melanie Salatino (2002-05)	63
3. Kristina Bunker (2004-SA)	61
4. Ryann Geldner (1998-02)	60
5. Maggie Fisher (2005-SA)	57
6. Kim Corona (1998-00)	49
Cara Samuelson (1998-02)	49

Goals	
1. Melanie Salatino (2002-05)	35
2. Maggie Fisher (2005-SA)	33
3. Ryann Geldner (1998-02)	32
Tristin Stephenson (1999-03)	32
5. Kim Corona (1998-00)	29
6. Ashleigh Miller (1998-02)	27

Assists

1. Kristina Bunker (2004-SA)	41
2. Tristin Stephenson (1999-03)	35
3. Devon Nichols (2002-04)	29
4. Ryann Geldner (1998-02)	28
Erin Hafermann (1998-02)	28
Melanie Salatino (2002-05)	28

Power Play Goals

1. Melanie Salatino (2002-05)	17
2. Tristin Stephenson (1999-03)	14
3. Noelle Needham (2004-2007)	11
4. Christina Lee (2006-SA)	8
5. Kate Hainrich (2002-05)	7
6. 3 tied with	6

Game-Winning Goals

1. Maggie Fisher (2005-SA)	7
2. Amanda Stohr (2004-SA)	5
3. Cara Samuelson (1998-02)	4
Kim Corona (1998-00)	4
Tristin Stephenson (1999-03)	4
Alycia Wilson (2003-06)	4

Shots	
1. Tristin Stephenson (1999-03)	330
2. Shera Vis (2003-07)	327
3. Melanie Salatino (2002-05)	316
4. Kristina Bunker (2004-SA)	297
5. Amanda Osborn (2000-04)	272

Goaltenders

Games Played	
1. Shari Vogt (2000-04)	103
2. Britni Kehler (2004-SA)	75
3. Katie Beaudy (1999-03)	48

Wins	
1. Britni Kehler (2004-SA)	32
2. Shari Vogt (2000-04)	26
3. Katie Beaudy (1999-03)	11

Saves	
1. Shari Vogt (2000-04)	3590
2. Britni Kehler (2004-SA)	2281
3. Katie Beaudy (1999-03)	1370

Save Percentage	
1. Brit Kehler (2004-SA)918
2. Laura Brennan (2003-06)917
3. Shari Vogt (2000-04)916
4. Katie Beaudy (1999-03)883

Goals Against Average

1. Brit Kehler (2004-SA)	2.70
2. Laura Brennan (2003-06)	2.71
3. Melissa Jackson (1998-99)	2.78
4. Shari Vogt (2000-04)	3.18
5. Katie Beaudy (1999-03)	4.14



MSU senior goaltender **Britni Kehler** ranks at the top of many season and career all-time records.

2007-08 MINNESOTA STATE HOCKEY

Key Dates in MSU Women's Hockey History



Sept. 17, 1997 - MSU announces that St. Olaf men's assistant coach **Todd Carroll** has been selected as first coach of the Maverick women's hockey program.

Oct., 30, 1998 - MSU falls by an 11-1 margin in the first game of Maverick women's hockey history. Freshman **Michelle Sikich** scored the first goal in school history with her first-period tally coming at the 2:44 mark. **Heather Nadeau** and **Jody Rankin** drew assists on the goal by Sikich.

Nov. 13, 1998 - **Alexis Schmidt-Pederson's** overtime tally lifts MSU to a 3-2 victory over Gustavus for program's first win.

Dec. 6, 1998 - Freshman forward **Erin Haferman** collects first hat trick in MSU women's hockey history when she scores three times in 7-4 win over Boston College.

March 6, 1999 - MSU closes out the inaugural season with a 6-0 loss at Minnesota. **Michelle Sikich** led the Mavericks in scoring for the season with 18-21--38 and freshman goaltender **Jenny Padgett** was named MVP as MSU posted a 14-15-0 record for the season.

Mar. 15 and 16, 1999 - The Mavericks open the season with a two-game home sweep over Wayne State as the Mavericks prevail by the scored of 8-0 and 8-2 over the visiting Warriors.

Feb. 26, 2000 - Minnesota downs MSU 10-0 in Minneapolis as the Mavericks concluded Year Two with an 8-25-2 ledger.

Mar. 8, 2001 - A 10-1 loss at Minnesota Duluth puts a bow on the 2000-01 campaign and the game marks the last MSU contest in the tenure of head coach **Todd Carroll**.

May 10, 2001 - Former Wisconsin women's hockey assistant coach **Jeff Vizenor** is introduced as the second head coach in the history of MSU women's hockey.

Oct. 26, 2001 - **Kearstin Soberg** scores twice as the Mavericks down Wayne State, 3-1, to give Vizenor his first win as head coach of the Mavericks.

Oct. 19, 2002 - Junior netminder **Shari Vogt** stops a team-record 63 shots in 6-1 loss at Minnesota Duluth. By the end of the season the Richmond, Minn., native would become the program's first All-WCHA selection.

Mar. 1, 2003 - A 7-3 home loss to St. Cloud State ends MSU's season, but the team's ten victories during the course of the season are an eight-win improvement over the previous year.

Oct. 17, 2003 - Forward **Melanie Salatino** becomes the fourth player in the program's history to score four goals in a game as the Mavericks best North Dakota 5-2 in Mankato.

Mar. 26, 2004 - MSU goes 16-14-4 and an announcement is made that **Jeff Vizenor** has been named WCHA Coach of the Year and senior goaltender **Shari Vogt** has been named All-WCHA First Team.

Mar. 29, 2004 - Senior goaltender **Shari Vogt** is named to the 2004 Jofa NCAA Division I Jofa All-America Second team, becoming the first MSU women's hockey player named All-American. Vogt, who was also a finalist for the Patty Kazmeier Award as the top player in the nation, concluded her stellar collegiate career as a four-time team MVP, an eight-time WCHA Player of the Week and the holder of virtually every MSU goaltending record.

Jan. 15, 2005 - Thunder Bay, Ont., native **Melanie Salatino** scores her 33rd career goal to become MSU's all-time leading goal-scorer as the Mavericks down North Dakota 3-0 in a WCHA game played in Mankato. The win was MSU's fifth in a row. Salatino scores two more times as MSU competes the year with a 9-20-6 record.

Feb. 24, 2006 - Sophomore goaltender **Britni Kehler** stops 48 shots in 3-3 overtime tie with #5 Minnesota Duluth and is named WCHA Defensive Player of the Week for third time of the season. MSU goes on to forge 11-21-4 record for the 2005-06 season.

Jan. 20, 2007 - The Mavericks claim a 4-3 win over Minnesota to complete a two-game home sweep over the seventh-ranked Gophers. The victory extends MSU's winning-streak to a school-record seven games and the Mavericks go 10-6-2 in the last 17 games of the year to finish 2006-07 with a 16-18-2 mark.

Feb. 10, 2007 - Junior goaltender **Britni Kehler** stops 30 shots and **Maggie Fisher** and **Jodi Helminen** score goals as the Mavericks down St. Cloud State. The win is the 100th of **Jeff Vizenor's** collegiate coaching career.



Michelle Sikich scored the first goal in school history with her first-period tally coming at the 2:44 mark.



Oct. 17, 2003 **Melanie Salatino** became the fourth player in the program's history to score four goals in a game. She is MSU's all-time leading goal scorer.



Shari Vogt was a finalist for the Patty Kazmeier Award as the top player in the nation, a four-time team MVP and an eight-time WCHA Player of the Week.



2007-08 MINNESOTA STATE HOCKEY

Year-by-Year Results

1998-99			Wisconsin (12/3)* L 7-0			Findlay (2/8) W 1-0			Overall Record: 9-20-6		
Minnesota (10/30)	L	11-1	Mercyhurst (12/9)	L	4-1	Ohio State (2/14)*	L	2-1 ot	WCHA Record: 8-17-3		
Harvard (11/7)\$	L	10-0	Mercyhurst (12/10)	L	4-1	Ohio State (2/15)*	L	5-4	(Head Coach Jeff Vizenor)		
New Hampshire (11/8)\$	L	8-0	Mercyhurst (1/5)	L	3-1	Minnesota (2/22)*	L	5-1	Team Leaders:		
Gustavus Adolphus (11/13)	W	3-2 ot	Niagara (1/6)	L	2-0	Minnesota (2/23)*	L	4-0	Stohr/Bunker/Salatino	19	
Gustavus Adolphus (11/14)	W	6-1	Minnesota (1/13)*	L	4-0	St. Cloud State (2/28)*	W	3-2	Amanda Stohr	10	
Minnesota (11/20)	L	8-1	Minnesota (1/14)*	L	3-0	St. Cloud State (3/1)*	L	7-3	Kristina Bunker	15	
St. Cloud State (11/21)	W	5-0	Minnesota-Duluth (1/19)*	L	8-0	Overall Record: 10-21-3			Points		
St. Lawrence (11/27)	L	5-1	Minnesota-Duluth (1/20)*	L	7-0	WCHA Record: 3-18-3			Goals		
St. Lawrence (11/28)	L	10-0	Gustavus (1/25)	L	3-2 ot	(Head Coach Jeff Vizenor)			Assists		
Boston College (12/4)	W	5-2	Ohio State (2/2)*	L	4-1	Team Leaders:			Power-Play Goals		
Boston College (12/6)	L	7-4	Ohio State (2/3)*	L	5-1	Tristin Stephenson/Amanda Osborn	21		GW Goals		
St. Cloud State (1/2)	W	4-1	Findlay (2/4)	L	2-1	Tristin Stephenson	11		PIM		
Gustavus Adolphus (1/9)	L	2-1	Findlay (2/9)	W	3-1	Amanda Osborn	11		2005-06		
Gustavus Adolphus (1/10)	W	6-2	Findlay (2/10)	T	2-2	Tristin Stephenson	4		Mercyhurst (10/7)	W	2-0
&Concordia (Que.) (1/15)	L	7-0	Wisconsin (2/16)*	L	5-1	Tristin Stephenson	3		Mercyhurst (10/8)	L	2-4
&Providence (1/16)	L	10-1	Wisconsin (2/17)*	L	5-0	Tristin Stephenson	26/58		North Dakota (10/14)	W	3-1
&St. Lawrence (1/17)	L	6-2	Bemidji State (2/24)*	L	4-2	Robyn Shaw			North Dakota (10/15)	W	3-2
Augsburg (1/22)	W	6-3	St. Cloud State (3/2)*	L	4-2	Points			Wisconsin (10/21)	L	1-4
Augsburg (1/23)	W	11-0	St. Cloud State (3/3)*	L	5-2	Goals			Ohio State (10/28)	T	2-2 ot
Minnesota-Duluth (1/29)	W	11-0	**Minnesota-Duluth (3/8)	L	10-1	Assists			Ohio State (10/29)	W	6-2
Minnesota-Duluth (1/30)	W	4-1	**WCHA Playoff Game in Rochester, Minn.			Power-Play Goals			Bemidji State (11/4)	W	3-0
Minnesota (2/7)	L	4-0	Overall Record: 2-31-2			GW Goals			Bemidji State (11/5)	L	1-2
Minnesota (2/14)	L	10-1	WCHA Record: 0-23-1			PIM			Wisconsin (11/9)	L	1-7
Providence (2/19)	L	4-2	(Head Coach Todd Carroll)			Team Leaders:			Wayne State (11/11)	W	3-2
Bemidji State (2/20)	W	9-0	2001-02			Sheri Maisonneuve	14		Wayne State (11/12)	W	5-1
St. Thomas (2/24)	W	14-0				Sheri Maisonneuve/Tristin Stephenson	5		St. Cloud State (11/18)	W	3-0
Bemidji State (2/26)	W	12-0				Sheri Maisonneuve	9		St. Cloud State (11/19)	W	2-0
%Minnesota-Duluth (3/6)	W	4-1				Cara Samuelson/Kristina Koga	2		Minnesota Duluth (12/2)	L	1-4
%Minnesota (3/11)	L	6-0				Jenny Kern	23/46		Minnesota Duluth (12/3)	L	1-5
Final Record: 14-15-0						2003-04			Minnesota (12/9)	L	0-1
(Head Coach Todd Carroll)						Minnesota Duluth (10/10)*	W	4-3	Minnesota (12/10)	T	1-1 ot
Team Leaders:						Minnesota Duluth (10/11)*	W	3-2	Ohio State (1/6)	L	0-3
Points	Michelle Sikich	39				North Dakota (10/17)	W	5-2	Ohio State (1/7)	L	2-4
Goals	Michelle Sikich	18				North Dakota (10/18)	W	3-2	Providence (1/14)	T	3-3 ot
Assists	Michelle Sikich	21				Bemidji State (10/24)*	W	2-1	Providence (1/15)	L	2-6
Power-Play Goals	Michelle Sikich	6				Bemidji State (10/25)*	W	3-0	Bemidji State (1/20)	L	1-2
GW Goals	Cara Samuelson/Ryann Geldner	3				North Dakota (11/8)	L	2-1	Bemidji State (1/21)	W	5-2
PIM	Erin Hafermann	35/81				North Dakota (11/9)	W	2-2 ot	North Dakota (1/29)	W	5-1
1999-2000						Wisconsin (11/15)*	L	4-3	Minnesota (2/3)	L	1-2 ot
Wayne State (10/15)*	W	8-0				Minnesota (11/22)*	T	1-1 ot	Minnesota (2/4)	L	3-4 ot
Wayne State (10/16)*	W	8-2				Minnesota (11/23)*	L	4-0	St. Cloud State (2/10)	L	0-1
Niagara (10/29)*	L	7-1				St. Cloud State (12/05)*	W	4-1	St. Cloud State (2/11)	L	1-6
St. Lawrence (10/30)*	L	3-1				St. Cloud State (12/06)*	T	3-3 ot	Wisconsin (2/17)	L	2-3
St. Lawrence (10/31)*	L	7-0				Providence (1/3)	W	2-1 ot	Minnesota Duluth (2/24)	T	3-3 ot
St. Cloud State (11/12)*	L	2-1				Providence (1/4)	W	2-1	Minnesota Duluth (2/25)	L	1-5
St. Cloud State (11/13)*	T	3-3 ot				Connecticut (1/9)	W	5-2	Minnesota	L	1-5
Minnesota-Duluth (11/19)*	L	10-4				Connecticut (1/10)	W	4-0	Minnesota	L	0-6
Minnesota-Duluth (11/20)*	L	7-0				Ohio State (1/16)*	L	3-0			
Minnesota (11/23)*	L	7-1				Ohio State (1/17)*	L	2-2 ot			
Bemidji State (11/27)*	W	4-3 ot				Findlay (1/18)	L	4-5			
Bemidji State (11/28)*	W	4-1				Minnesota (1/24)*	L	3-2			
Wisconsin (12/3)*	L	3-2				Minnesota (1/25)*	W	3-2 ot			
Wisconsin (12/4)*	L	5-2				Wisconsin (2/7)*	L	3-0			
Ohio State (12/10)*	L	2-1				Wisconsin (2/8)*	L	4-1			
Ohio State (12/11)*	L	2-0				Ohio State (2/13)*	W	4-1			
Augsburg (12/12)*	W	6-2				Ohio State (2/14)*	L	2-0			
Findlay (1/7)*	L	4-3				Bemidji State (2/20)*	T	2-2 ot			
Gustavus Adolphus (1/8)*	W	6-2				Bemidji State (2/21)*	W	4-1			
Gustavus Adolphus (1/9)*	W	7-3				St. Cloud State (2/27)*	L	2-1			
Minnesota (1/14)*	L	7-0				St. Cloud State (2/28)*	W	3-2			
Minnesota (1/15)*	L	10-0				Minnesota Duluth (3/5)*	L	9-0			
St. Cloud State (1/28)*	L	3-2				Minnesota Duluth (3/6)*	L	3-0			
St. Cloud State (1/29)*	L	5-4 ot				Ohio State (3/12)#	L	3-1			
Bemidji State (2/4)*	T	2-2				Overall Record: 16-14-4					
Bemidji State (2/5)*	W	5-4				WCHA Record: 9-11-4					
Minnesota (2/8)*	L	8-3				(Head Coach Jeff Vizenor)					
Wisconsin (2/11)*	L	6-2				Team Leaders:					
Wisconsin (2/12)*	L	7-1				Devon Nichols	30				
Ohio State (2/18)*	L	6-0				Melanie Salatino	18				
Ohio State (2/19)*	L	4-3				Devon Nichols	21				
Findlay (2/20)*	L	6-3				Power-Play Goals	11				
Minnesota-Duluth (2/25)*	L	7-0				GW Goals	3				
Minnesota-Duluth (2/26)*	L	9-2				PIM	36/72				
**Minnesota (3/2)*	L	10-0				2004-05					
Overall Record: 4-26-2						Ohio State (10/15)*	L	2-1			
WCHA Record: 1-22-1						Ohio State (10/16)*	L	4-2			
(Head Coach Jeff Vizenor)						Minnesota Duluth (10/22)*	L	2-0			
Team Leaders:						Minnesota Duluth (10/23)*	T	3-3 ot			
Points	Ryann Geldner	11				Minnesota (10/29)*	L	6-1			
Goals	Ryann Geldner	7				Minnesota (10/30)*	L	6-0			
Assists	Elaine Topolnisky	5				St. Cloud State (11/05)*	W	2-0			
Power-Play Goals	Sheri Maisonneuve/Amy Egli	2				St. Cloud State (11/06)*	T	1-1 ot			
GW Goals	Elaine Topolnisky	2				Bemidji State (11/12)*	W	5-3			
PIM	Robyn Shaw	18/36				Bemidji State (11/13)*	W	4-2			
2002-03						Connecticut (11/19)	T	2-2 ot			
Ohio State (10/11)*	L	6-1				Connecticut (11/20)	T	2-2 ot			
Ohio State (10/12)*	L	3-1				New Hampshire (11/27)	L	4-1			
Minnesota Duluth (10/18)*	L	12-1				Dartmouth (11/28)	L	4-0			
Minnesota Duluth (10/19)*	L	6-1				North Dakota (12/4)	L	2-1			
Bemidji State (10/25)*	L	6-2				North Dakota (12/5)	T	4-2 ot			
Bemidji State (10/26)*	W	2-1				Wisconsin (12/10)*	L	4-4			
Mercyhurst (11/2)	L	2-1				Wisconsin (12/11)*	L	4-1			
Mercyhurst (11/3)	L	3-2				Vermont (12/31)	T	0-0 ot			
North Dakota (11/8)	L	3-2				Vermont (1/3)	W	1-0			
North Dakota (11/9)	W	3-1				St. Cloud State (1/7)*	W	4-2			
St. Cloud State (11/15)*	W	6-0				St. Cloud State (1/8)*	W	6-3			
St. Cloud State (11/16)*	L	1-0				North Dakota (1/14)*	W	2-0			
Wisconsin (11/30)*	T	3-3 ot				North Dakota (1/15)	W	3-0			
Wisconsin (12/1)*	L	4-0				Minnesota Duluth (1/21)*	L	4-0			
Minnesota (12/7)*	L	5-2				Minnesota Duluth (1/22)*	L	4-1			
Minnesota (12/8)	L	3-0				Wisconsin (2/5)*	L	3-0			
Quinnipiac (1/4)	W	6-0				Wisconsin (2/6)*	L	7-2			
Quinnipiac (1/5)	W	5-1				Bemidji State (2/11)*	L	3-0			
Bemidji State (1/10)*	T	2-2 ot				Bemidji State (2/12)*	L	1-0			
Bemidji State (1/11)*	T	3-3 ot				Minnesota (2/19)*	L	5-0			
Wayne State (1/17)	W	2-1				Minnesota (2/20)*	L	3-0			
Wayne State (1/18)	W	5-3				Ohio State (2/25)*	L	5-3			
Minnesota-Duluth (1/25)*	L	6-1				Ohio State (2/26)*	W	3-2			
Wisconsin (1/31)*	L	6-1				Ohio State (3/4)#	L	4-1			
Wisconsin (2/1)*	L	3-1				Points					
Findlay (2/7)	W	9-1				Points	Maggie Fisher	34			
2000-01						Goals	Maggie Fisher	17			
Wayne State (10/13)	L	0-1 ot				Assists	Kristina Bunker	18			
Wayne State (10/14)	W	3-2				Power-Play Goals	Christina Lee	8			
St. Cloud State (10/20)*	L	5-1				GW Goals	Maggie Fisher	5			
St. Cloud State (10/21)*	L	6-1				PIM	Noelle Needham	34/87			
Minnesota (10/27)*	L	2-1				Overall Record: 16-17-2					
Minnesota (10/28)*	L	6-1				WCHA Record: 12-14-2					
Minnesota-Duluth (11/3)*	L	7-0				(Head Coach Jeff Vizenor)					
Minnesota-Duluth (11/4)*	L	6-0				Home games in BOLD					
Bemidji State (11/10)*	L	1-0				Conference matches denoted with *					
Bemidji State (11/11)*	L	3-0									
Ohio State (11/17)*	T	6-0									
Ohio State (11/18)*	T	2-2									
Wisconsin (12/2)*	L	3-1									

2007-08 MINNESOTA STATE HOCKEY

All-Time Series Records



RECORDS VS. OPPONENTS

Augsburg (3-0-0)

1998-99	W, 6-3
1998-99	W, 11-0
1999-2000	W, 6-2

Bemidji State (15-13-6)

1998-99	W, 9-0
1998-99	W, 12-0
1999-2000	W, 4-3 ot
1999-2000	W, 4-1
1999-2000	T, 2-2
1999-2000	W, 5-4
2000-01	L, 1-0
2000-01	L, 3-0
2000-01	L, 4-2
2000-01	L, 5-2
2001-02	L, 4-1
2001-02	L, 4-3
2001-02	L, 5-1
2001-02	T, 2-2 ot
2002-03	L, 6-2
2002-03	W, 2-1
2002-03	T, 2-2
2002-03	T, 3-3
2003-04	W, 2-1
2003-04	W, 3-1
2003-04	T, 2-2
2003-04	W, 4-1
2004-05	W, 5-3
2004-05	W, 4-2
2004-05	L, 3-0
2004-05	L, 1-0
2005-06	W, 3-0
2005-06	L, 2-1
2005-06	L, 2-1
2005-06	W, 5-2
2006-07	L, 5-2
2006-07	W, 5-1
2006-07	W, 4-1
2006-07	T, 3-3

Boston College (1-1-0)

1998-99	W, 5-2
1998-99	L, 7-4

Concordia - Quebec (0-1-0)

1998-99	L, 7-0
---------	--------

Connecticut (2-0-2)

2003-04	W, 5-2
2003-04	W, 4-0
2004-05	T, 2-2 ot
2004-05	T, 2-2 ot

Dartmouth (0-1-0)

2004-05	L, 4-0
---------	--------

Findlay (4-5-1)

1999-2000	L, 4-3
1999-2000	L, 6-3
2000-01	L, 2-1
2000-01	W, 3-1
2000-01	T, 2-2
2001-02	L, 4-2
2001-02	W, 1-0
2002-03	W, 9-1
2002-03	W, 1-0
2003-04	L, 4-3

Gustavus Adolphus (5-2-0)

1998-99	W, 3-2 ot
1998-99	W, 6-1
1998-99	L, 2-1

1998-99	W, 6-2
---------	--------

1999-2000	W, 6-2
1999-2000	W, 7-3
2000-01	L, 3-2 ot

Harvard (0-1-0)

1998-99	L, 10-0
---------	---------

Mercyhurst (1-8-0)

2000-01	L, 4-0
2000-01	L, 4-1
2000-01	L, 3-1
2001-02	L, 3-1
2001-02	L, 3-1
2002-03	L, 2-1
2002-03	L, 3-2
2005-06	W, 2-0
2005-06	L, 4-2

Minnesota (3-35-2)

1998-99	L, 11-1
1998-99	L, 8-1
1998-99	L, 4-0
1998-99	L, 10-1
1998-99	L, 6-0
1999-2000	L, 7-1
1999-2000	L, 10-0
1999-2000	L, 8-3
1999-2000	L, 10-0
2000-01	L, 2-1
2000-01	L, 6-1
2000-01	L, 4-0
2000-01	L, 3-0
2001-02	L, 2-0
2001-02	L, 4-1
2001-02	L, 3-0
2001-02	L, 6-1
2002-03	L, 5-2
2002-03	L, 3-1
2002-03	L, 5-1
2002-03	L, 4-0
2003-04	T, 1-1
2003-04	L, 4-0
2003-04	L, 3-2
2003-04	W, 3-2
2004-05	L, 6-1
2004-05	L, 6-0
2004-05	L, 5-0
2004-05	L, 3-0
2005-06	L, 1-0
2005-06	T, 1-1 ot
2005-06	L, 2-1 ot
2005-06	L, 4-3 ot
2005-06	L, 5-1
2005-06	L, 6-0
2006-07	L, 4-1

Minnesota Duluth Club (3-0-0)

1998-99	W, 11-0
1998-99	W, 4-1
1998-99	W, 4-1

Minnesota Duluth (3-27-3)

1999-2000	L, 10-4
1999-2000	L, 7-0
1999-2000	L, 3-1
1999-2000	L, 9-2
2000-01	L, 7-0

2000-01	L, 6-0
---------	--------

2000-01	L, 8-0
2000-01	L, 7-0

2000-01	L, 10-1
2001-02	L, 7-0
2001-02	L, 6-1
2001-02	L, 2-1
2001-02	L, 6-2
2002-03	L, 12-1
2002-03	L, 6-1
2002-03	L, 6-1
2002-03	L, 8-1
2003-04	W, 4-3
2003-04	W, 3-2
2003-04	L, 9-0
2003-04	L, 3-0
2004-05	L, 2-0
2004-05	T, 3-3 ot
2004-05	L, 4-0
2004-05	L, 4-1
2005-06	L, 4-1
2005-06	L, 5-1
2005-06	T, 3-3 ot
2005-06	L, 5-1
2006-07	L, 3-1
2006-07	L, 6-1
2006-07	T, 5-5 ot
2006-07	W, 5-3

New Hampshire (0-2-0)

1998-99	L, 8-0
2004-05	L, 4-1

Niagara (0-2-0)

1999-2000	L, 7-1
2000-01	L, 2-0

North Dakota (13-4-1)

2002-03	L, 3-2
2002-03	W, 3-1
2003-04	W, 5-2
2003-04	W, 3-2
2003-04	L, 2-0
2003-04	W, 5-2
2004-05	L, 4-1
2004-05	T, 2-2 ot
2004-05	W, 2-0
2004-05	W, 3-0
2005-06	W, 3-1
2005-06	W, 3-2
2005-06	L, 3-0
2005-06	W, 5-1
2006-07	W, 7-0
2006-07	W, 3-0
2006-07	W, 4-2
2006-07	W, 4-2

Ohio State (3-30-3)

1999-2000	L, 2-0
1999-2000	L, 2-0
1999-2000	L, 7-0
1999-2000	L, 4-3
2000-01	L, 6-0
2000-01	T, 2-2
2000-01	L, 4-1
2000-01	L, 5-1
2001-02	L, 2-0
2001-02	L, 3-1
2001-02	L, 4-2
2001-02	L, 2-0
2002-03	L, 6-1
2002-03	L, 3-1
2002-03	L, 2-1 ot

2002-03	L, 5-4
---------	--------

2003-04	L, 3-0
2003-04	T, 2-2

2003-04	W, 4-1
2003-04	L, 2-0
2003-04	L, 6-1
2004-05	L, 2-1
2004-05	L, 4-2
2004-05	L, 3-5
2004-05	W, 3-2
2004-05	L, 4-1
2005-06	T, 2-2 ot
2005-06	W, 6-2
2005-06	L, 3-0
2005-06	L, 4-2
2006-07	L, 2-1
2006-07	L, 4-3
2006-07	L, 4-3 ot
2006-07	L, 6-4
2006-07	L, 1-0
2006-07	L, 5-4 ot

Providence (2-2-1)

1998-99	L, 10-1
2003-04	W, 2-1
2003-04	W, 2-1
2005-06	T, 3-3 ot
2005-06	L, 6-2

Quinnipiac (2-1-1)

2001-02	L, 3-2 ot
2001-02	T, 1-1 ot
2002-03	W, 6-0
2002-03	W, 5-1

Robert Morris (1-0)

2006-07	W, 6-0
---------	--------

St. Cloud State (15-16-3)

1998-99	W, 5-0
1998-99	W, 4-1
1999-2000	L, 2-1
1999-2000	T, 3-3 ot
1999-2000	L, 3-2
1999-2000	L, 5-4 ot
2000-01	L, 5-1
2000-01	L, 6-1
2000-01	L, 4-2
2000-01	L, 5-2
2001-02	L, 8-3
2001-02	L, 7-2
2001-02	L, 2-1
2001-02	W, 3-2 ot
2002-03	W, 6-0
2002-03	L, 1-0
2002-03	W, 3-2
2002-03	L, 7-3
2003-04	W, 4-1
2003-04	T, 3-3
2003-04	L, 2-1
2003-04	W, 3-2
2004-05	W, 2-0
2004-05	T, 1-1 ot
2004-05	W, 4-2
2004-05	W, 6-3
2005-06	W, 3-0
2005-06	W, 2-0
2005-06	L, 1-0
2005-06	L, 6-1
2006-07	W, 3-2
2006-07	L, 3-2
2006-07	W, 4-3 ot
2006-07	W, 2-0

St. Lawrence (0-5-0)

1998-99	L, 5-1
1998-99	L, 10-0
1998-99	L, 6-2
1999-2000	L, 3-1
1999-2000	L, 7-0

St. Thomas (1-0-0)

1998-99	W, 14-0
---------	---------

Vermont (1-0-1)

2004-05	T, 0-0 ot
2004-05	W, 1-0
2006-07	W, 4-0
2006-07	W, 7-1

Wayne State (10-2-0)

1999-2000	W, 8-0
1999-2000	W, 8-2
2000-01	L, 1-0 ot
2000-01	W, 3-2
2001-02	W, 3-1
2001-02	W, 1-0
2002-03	W, 2-1
2002-03	W, 5-3
2005-06	W, 3-2
2005-06	W, 5-1
2006-07	W, 6-1
2006-07	L, 7-3

Wisconsin (0-31-1)

1999-2000	L, 3-2
1999-2000	L, 5-2
1999-2000	L, 6-2
1999-2000	L, 6-1
2000-01	L, 3-1
2000-01	L, 7-0
2000-01	L, 5-1
2000-01	L, 5-0
2001-02	L, 4-1
2001-02	L, 3-0
2001-02	L, 4-0
2001-02	L, 3-0
2002-03	T, 3-3
2002-03	L, 4-0
2002-03	L, 6-1
2002-03	L, 3-1
2003-04	L, 3-0
2003-04	L, 4-3
2003-04	L, 3-0
2003-04	L, 4-1
2004-05	L, 4-0
2004-05	L, 4-1
2004-05	L, 3-0
2004-05	L, 7-2
2005-06	L, 4-1
2005-06	L, 7-1
2005-06	L, 3-2
2005-06	L, 5-0
2006-07	L, 3-1
2006-07	L, 6-1
2006-07	L, 5-0
2006-07	L, 8-0

All-time Record (9 years)

90-190-25 (.336)

WCHA Record (8 years)

44-141-19 (.262)



2007-08 MINNESOTA STATE HOCKEY

MSU Facilities



Alltel Center

The Mavericks men's hockey team christened the Alltel Center Feb. 3, 1995 when they defeated Alabama-Huntsville 6-3 in front of 3,147 fans.

An integral part of the Mavericks' move to NCAA Division I status, the arena seats 4,704.

In just a short time, the Alltel Center has established itself as one of the Midwest's premiere centers for meetings and entertainment.

Operated by Compass Management, the Alltel Center has hosted nationally televised events, such as the Riders Professional Ladies Figure Skating Championships and Monday Nitro World Championship Wrestling as well as collegiate, international and professional sporting events.

The Alltel Center is made up of four components, including a 7,300-seat arena, a reception hall, conference center and a banquet/exhibition hall. They

also feature an in-house advertising agency as well as providing sales, catering and security staffing for all events.

The Alltel Center Conference Center is flexible to handle large or small groups. Equipment rental, high-tech teleconferencing links and full-service catering are available and the nine meeting rooms can be customized to meet the special needs of any group.

Arena

State-of-the-art acoustics and a superb sound system make the Alltel Center Arena one of the finest in the country. With one of the largest floor capacities in Minnesota, the Arena has 7,300 seats available for concerts and has hosted some of the hottest national entertainment acts touring today.

Post-Game Events

Following the Minnesota State women's hockey game against Wisconsin Jan. 5, 2008, members of the Maverick women's hockey team will participate in the annual "Skate with the Mavericks", at All Seasons Arena in Mankato, Minn. "Skate With The Mavericks" allows a chance for fans and supporters of Maverick hockey the opportunity to skate with the athletes.



Fans and supporters of Maverick hockey on the ice of the Alltel Center.



All Seasons Arena

Opened in 1974, All Seasons Arena has served as the home of Minnesota State Hockey for more than 25 years.

With the completion of the MSU Hockey Complex addition (renamed The Don Brose Hockey Center in Oct. of 2000) to All Seasons Arena in the summer of 1999, the Mavericks can claim practice and administrative facilities second-to-none.

The facility is named after the former coach of MSU's men's hockey program, Don Brose. Brose, who led the Mavericks to a NCAA Division II title in 1980, completed his 30-year coaching career following the 1999-2000 season with a 536-335-79 record.

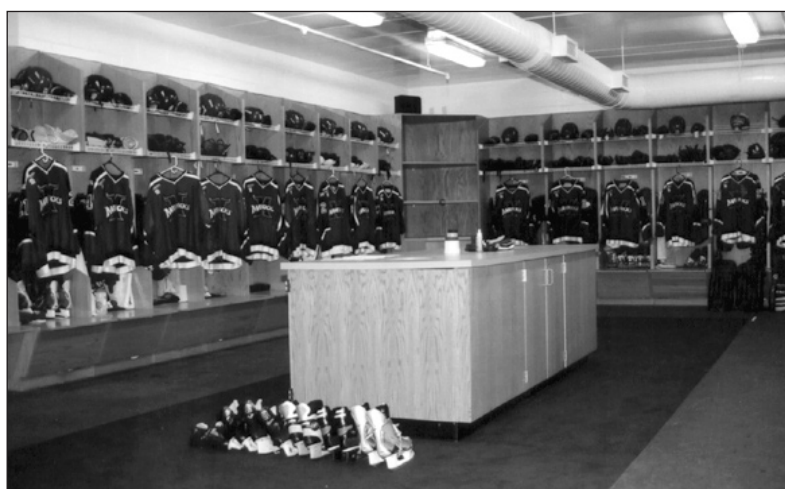
Constructed to accommodate MSU's men's and women's hockey programs, All Seasons Arena features several amenities in making it one of the top college hockey administrative facilities in the nation.

With two different-sized ice sheets - one regulation and one Olympic, ASA gives the Mavericks unique flexibility.

The two-story 96,000-square foot Don Brose Hockey Center, completed in August of 1999, boasts student study center/lounge area equipped with computers, video equipment and a big screen television.

The complex also includes a reception area, athletic training room, equipment room, men's and women's hockey coaches offices, weight room and locker room areas.

The Don Brose Hockey Center is located in All Seasons Arena at 1251 Monks, Suite 2 and the phone number is 507-389-1210.





With a noteworthy past that spans six decades and marks its 56th season overall in 2007-08, three characteristics that continue to define the Western Collegiate Hockey Association are history, tradition and success.

From the founding days as the Midwest Collegiate Hockey League (MCHL) from 1951-53, to the Western Intercollegiate Hockey League (WIHL) from 1953-58, and ultimately on to the Western Collegiate Hockey Association in 1959, this prestigious athletic conference has developed and maintained a tradition of excellence that truly is second to none.

In fact, no collegiate conference - in any sport - can top the impressive list of national scale accomplishments of the WCHA and its member teams. Since 1951, teams representing the men's WCHA have earned a record 36 NCAA (national) championships, finished as the national runner-up another 27 times, and qualified for a berth in collegiate hockey's national championship round - the NCAA Men's Frozen Four - in 52 of 55 seasons overall. And since it's founding in 1999-2000, teams representing the women's WCHA have now captured eight consecutive national championships in 2000, 2001, 2002, 2003, 2004, 2005, 2006 and 2007!

In addition to its successes in national championship tournament play over the years, the Western Collegiate Hockey Association owns an enviable reputation for producing outstanding coaches and student-athletes, with hundreds upon hundreds of its alumni moving on to successful professional and Olympic playing careers. On top of the more than 200 men's and women's league alumni who have Olympic experience playing for the likes of the U.S., Canada, Italy, Norway, Austria, Germany, Sweden, Finland, and France, conference-member teams and players have also received additional international exposure on a regular basis since 1951. The WCHA has hosted touring teams from the USSR, Canada, Sweden, Czechoslovakia, Latvia, Germany, Italy, Finland, Norway, Switzerland, England and France. The league has also sent men's WCHA All-Star Teams to Europe in both 1998 (Switzerland) and 2000 (Norway) and hopes to make another overseas trip in the future, while the women's WCHA has also regularly put together all-star teams, with the 2005-06 season bringing WCHA All-Star Team games against the U.S. National Team at both Xcel Energy Center and the Duluth Entertainment & Convention Center. In 2006-07, the women's WCHA had nine current and seven former players compete at the 2007 IIHF Women's World Championship in Manitoba, with the likes of former and current WCHA stars Carla MacLeod, Caroline Ouellette, and Tessa Bonhomme winning Gold as members of Team Canada.

Just a few of the more than 350 past and present National Hockey League's who have roots in the WCHA include the likes of legendary goaltenders Tony Esposito, Eddie Mio and Glenn 'Chico' Resch, defensemen Keith Magnuson, Lou Nanne and Curt Giles, and forwards Lou Angotti, Bill Masterton, Bill 'Red' Hay, Red Berenson, Glenn Anderson and Mark Johnson. The current crop of WCHA stars playing in the NHL include the likes of Chris Chelios, Brett Hull, Dany Heatley, Mark Parrish, Jordan Leopold, Curtis Joseph, Greg Johnson, Sean Hill, Antti Laaksonen, Jason Blake, Tyler Arnason, Andy Sutton, Bret Hedican and Matt Carle.

WCHA home attendance for men's games reached another new milestone in 2006-07, this time surpassing the 1.6 million mark for the first time with a record total of 1,606,686 and a per game average attendance of 7,370. The WCHA has now surpassed the one million mark in home attendance 14 straight seasons and 1.5 million for five straight seasons.

The WCHA also led the way again in women's national attendance in 2006-07. Wisconsin ranked first in average home attendance with at 1,362 for 20 home dates. They also led the nation with a total home attendance figure of 28,607. Minnesota and Minnesota Duluth ranked second and third, respectively, in both categories. WCHA home arenas were also the site of two of the top single-game attendance highs. Leading the way was the NCAA regional game at UW's Kohl Center against Harvard with 5,125 on March 10. Also ranked was a January sellout at Ridder Arena when Minnesota drew 3,251 for a game against Wisconsin. The Border Battle attracted 5,524 for the two-game series.

Over the last decade, the WCHA has been able to showcase its exciting brand of hockey to an ever-increasing number of fans, thanks in part to such impressive new facilities as Ralph Engelstad Arena in Grand Forks, Colorado Springs World Arena, the Kohl Center in Madison, Magness Arena in Denver, Mariucci Arena and Ridder Arena in Minneapolis, the National Hockey Center in St. Cloud, and Alltel Center in Mankato.

The conference's two annual playoff championships, known as the Red Baron WCHA Final Five (men's) and the WCHA Championship (women's), continue to be among the most successful collegiate tournaments of their kind. Held at Xcel Energy Center in St. Paul, the WCHA Final Five has drawn in excess of 1,100,000 fans since its inception in 1987 - including a record 88,900 in 2007. The women's 2008 WCHA Championship, set for next March 8-9 at the Duluth Entertainment & Convention Center, also continues to grow both in exposure and attendance.

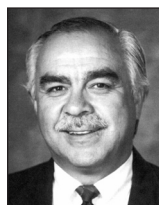
Also in 2007-08, WCHA member arenas will be showcased throughout the hockey world as they will host several national events. On the final weekend of March, the Colorado Springs World Arena, home of the CC Tigers, will host the NCAA Men's West Regional while the Kohl Center, home of the UW Badgers, will host the NCAA Men's Midwest Regional. And the University of Denver will serve as the host institution for the 2008 NCAA Men's Frozen Four, to be held April 10-12 at Pepsi Center in the Mile High City. On the women's side, the Duluth Entertainment & Convention, home of the UMD Bulldogs, will host both the WCHA Championship on March 8-9 and the 2008 NCAA Women's Frozen Four from March 20-22.

Under the leadership and guidance of Commissioner Bruce M. McLeod and Associate Commissioner Sara R. Martin, the Western Collegiate Hockey Association proudly celebrates its 56th season of men's competition and ninth in women's competition in 2007-08 with prospects for another tremendously competitive campaign being extremely bright.



WCHA Administrative and Office
2201 Asbury Avenue
Denver, CO 80208-320
Phone: 303-871-4223
FAX: 303-871-2600

Public Relations and Marketing
PO Box 5426
Madison, WI 53705-5426
Phone: 608-829-0100
FAX: 608-829-0200
e-mail: dspencer@mailbag.com
Web site: www.wcha.com



Bruce McLeod
Commissioner



Sara Martin
Associate
Commissioner



Doug Spencer
Public Relations
Director

WCHA Members/Contacts

Bemidji State

Cedrique Flemming
1500 Birchmont Dr. NE
Bemidji, MN 56601
Phone: 218-755-2763
Fax: 218-755-3898
e-mail:
cflemming@bemidjistate.edu

Minnesota

Michelle Traen
220 Bierman Athletic Bldg.
516 15th Avenue
Minneapolis, MN 55455-0101
Phone: 612-624-0522
Fax: 612-625-0359
e-mail: traen001@umn.edu

Minnesota Duluth

Kelly Grgas-Wheeler
10 University Drive
Duluth, MN 55812
Phone: 218-726-8937
Fax: 218-726-6529
e-mail: kgrgaswh@d.umn.edu

Minnesota State

Dax Larson
175 Taylor Center
Mankato, MN 56001
Phone: 507-389-5967
Fax: 507-389-1923
e-mail: dax.larson@mnsu.edu

North Dakota

Jayson Hajdu
P.O. Box 9013
Grand Forks, ND 58202-9013
Phone: 701.777.2986
Fax: 701-777-4352
e-mail: jaysonhajdu@mail.und.nodak.edu

Ohio State

Courtney Walerius
410 Woody Hayes Drive
124 St. John Arena
Columbus, OH 43210-1166
Phone: 614-292-0088
Fax: 614-292-8547
e-mail: walerius.2@osu.edu

St. Cloud State

Celest Stang
Halenbeck Hall, Rm 202
720 4th Avenue South
St. Cloud, MN 56301-4498
Phone: 320-308-2141
Fax: 320-308-2099
e-mail: crstang@stcloudstate.edu

Wisconsin

Adam Augustine
1440 Monroe Street
Madison, WI 53711
Phone: 608-262-2255
Fax: 608-262-8184
e-mail: ara@athletics.wisc.edu

2007-08 MINNESOTA STATE HOCKEY

2006-07 Western Collegiate Hockey Association



All-WCHA First Team

Po.	Name	School
F	Sara Bauer	UW
F	Noemie Marin	UMD
F	Gigi Marvin	UM
D	Meaghan Mikkelsen	UW
D	Tessa Bonhomme	OSU
G	Jessie Vetter	UW

Second Team

Po.	Name	School
F	Meghan Duggan	UW
F	Erin Keys	OSU
F	Jinelle Zaugg	UW
D	Amber Bowman	OSU
D	Bobbi-Jo Slusar	UW
G	Kim Martin	UMD

Rookie Team

Po.	Name	School
F	Meghan Duggan	UW
F	Holly Roberts	SCSU
F	Saara Tuominen	UMD
D	Holly Snyder	MSU
D	Michelle Maunu	UMD
D	Ashley Lynch	UND
G	Kim Martin	UMD

Player of the Year

Sara Bauer, UW

Student-Athlete of the Year

Riita Schaublin, UMD

Defensive Player of the Year

Meaghan Mikkelsen, UW

Rookie of the Year

Meghan Duggan, UM

Coach of the Year

Mark Johnson, UW

WCHA All-Academic Team

Bemidji State (11): Haley Balcom, Emily Brookshaw, Brooke Collins, Tara Hiscock, Lisa Kissick, Jaime LeDuc, Jessica Pullar, Monica Rawlings, Kate Robinson, Helena Tageson, Nina Zieganahals

Minnesota (8): Lindsay Block, Gigi Marvin, Erica McKenzie, Anya Miller, Andrea Nichols, Bobbi Ross, Maggie Souba, Dagney Willey

Minnesota Duluth (9): Karine Demeule, Kirsti Hakala, Jessica Koizumi, Michaela Lanzl, Noemie Marin, Tawni Mattila, Riita Schaublin, Myriam Trepanier, Suvi Vacker

Minnesota State (12): Kristina Bunker, Jodi Helminen, Jenna Hewitt, Megan Jedinak, Britni Kehler, Lindsay Macy, Samantha Miller, Richelle St. Croix, Amanda Stohr, Andreanne Thibault, Shera Vis, Ashley Young

North Dakota (7): Aynsley Allen, Christey Allen, Christine Carlson, Alexia Gagnon-LaPlante, Casie Hanson, Alyssa Johnson, Randi Motsko

Ohio State (11): Olivia Antognoli, Liana Bonanno, Amber Bowman, Jody Heywood, Megan Hostasek, Erin Keys, Whitney Miller, Mallory Peckels, Lacey Schultz, Krysta Skarda, Erika Vanderveer

St. Cloud State (12): Bobbie Anderson, Hailey Clarkson, Jacqueline Jensen, Abby Krause, Laura Fast, Tricia Fast, Marie-Michel Lemieux, Denelle Maguet, Michelle Moen, Sammy Nixon, Brita Schroeder, Lauri St. Jacques

Wisconsin (7): Sara Bauer, Rachel Bible, Angie Keseley, Heidi Kletzien, Meaghan Mikkelsen, Phoebe Monteleone, Jessie Vetter

WCHA Standings

Team	Pts	GP	Record	Win%	GF- GA	GP	Record	Win%	GF-GA
1. Wisconsin	50	28	23-1-4	.893	112-33	41	36-1-4	.927	166-36
2. Minnesota Duluth	41	28	19-6-3	.732	102-38	39	24-11-4	.667	128-68
3. Minnesota	35	28	17-10-1	.625	85-66	36	23-12-1	.653	115-85
4. Ohio State	30	28	13-11-4	.536	79-70	37	20-13-4	.595	112-87
5. Minnesota State	26	28	12-14-2	.464	78-91	35	16-17-2	.486	108-106
6. Bemidji State	22	28	9-15-4	.393	53-85	36	11-20-5	.375	66-110
7. St. Cloud State	19	28	7-16-5	.339	66-94	37	12-18-7	.419	99-110
8. North Dakota	1	28	0-27-1	.018	24-122	36	3-31-2	.111	39-142

Conference

Overall

Statistical Leaders

Point Scoring Leaders

Rk	Name	Team	Yr.	Pos.	GP	G-A--P	PPG
1	Sara Bauer	UW	SR	F	28	16-35-51	1.82
2	Noemie Marin	UMD	SR	F	28	21-20-41	1.46
3	Erin Keys	OSU	JR	F	28	19-20-39	1.39
4	Meghan Duggan	UW	FR	F	26	17-17-34	1.31
5	Meaghan Mikkelsen	UW	SR	D	28	9-24-33	1.18
6	Jessica Koizumi	UMD	SR	F	25	15-17-32	1.28
7	Gigi Marvin	UM	SO	F	28	16-15-31	1.11
	Saara Tuominen	UMD	FR	F	28	8-23-31	1.11
9	Jinelle Zaugg	UW	JR	F	28	20-10-30	1.07
10	Amber Bowman	OSU	SR	D	28	5-24-29	1.04



Defenseman **Holly Snyder** made the All-WCHA Rookie Team.

Rookie Scoring

Rk	Name	Team	Yr.	Pos.	GP	G-A--P	PPG
1	Meghan Duggan	UW	FR	F	26	17-17-34	1.31
2	Saara Tuominen	UMD	FR	F	28	8-23-31	1.11
3	Emmanuelle Blais	UMD	FR	F	28	11-15-26	0.93
4	Elin Holmlov	UMD	FR	F	22	5-20-25	1.14
	Christina Lee	MSU	FR	F	28	13-12-25	0.89
6	Meaghan Pezon	SCSU	FR	F	28	8-11-19	0.68
	Holly Roberts	SCSU	FR	F	28	7-12-19	0.68
	Brittany Francis	UM	FR	F	28	6-13-19	0.68
9	Caitlin Hogan	SCSU	FR	F	28	8- 7-15	0.54
10	Kala Buganski	MSU	FR	F	27	4- 8-12	0.44
	Kyla Sanders	UW	FR	F	28	6- 6-12	0.43



Goaltender **Britni Kehler** ranked fourth in the WCHA with a .923 save percentage.

Goaltending Statistics

Rk	Name	Team	Yr.	Minutes	GA	GAA	Svs	Pct.
1	Kim Martin	UMD	FR	872:22	16	1.10	382	.960
2	Christine Dufour	UW	SR	727:01	13	1.07	243	.949
3	Riita Schaublin	UMD	SR	793:12	21	1.59	317	.938
4	Jessie Vetter	UW	SO	965:02	20	1.24	275	.932
5	Erika Vanderveer	OSU	SR	1385:53	53	2.29	573	.915
6	Britni Kehler	MSU	JR	1626:49	84	3.10	897	.914
7	Brittony Chartier	UM	SO	773:51	26	2.02	272	.913
8	Emily Brookshaw	BSU	JR	1657:39	80	2.90	816	.911
9	Kim Hanlon	UM	SO	883:22	38	2.58	320	.894
10	Brittany Kirkham	UND	FR	1554:48	105	4.05	744	.876



September	November	Fri/14	St. Cloud State @ Minnesota State 7:07 pm CT
Fri/28 Wisconsin @ Union College (nc) 7:00 pm ET Univ. of Manitoba @ Bemidji State (x) 7:07 pm CT	Thu/1 St. Cloud State @ Minnesota State 7:07 pm CT	Minnesota Duluth @ St. Lawrence (nc) 7:00 pm ET	Sun/3 North Dakota @ Wisconsin 2:07 pm CT
Sat/29 Wisconsin @ Union College (nc) 7:00 pm ET Wilfrid Laurier Univ. @ Ohio State (x) 1:07 pm ET Balmoral Hall School @ St. Cloud State (x) 2:07 pm CT Univ. of Manitoba @ North Dakota (x) 7:07 pm CT	Fri/2 Bemidji State @ Ohio State 7:07 pm ET Minnesota @ Wisconsin 2:07 pm CT	Sat/15 Minnesota Duluth @ St. Lawrence (nc) 7:00 pm ET	Fri/8 Wisconsin @ Minnesota Duluth 7:07 pm CT Ohio State @ Minnesota 7:07 pm CT Bemidji State @ Minnesota State 7:07 pm CT St. Cloud State @ North Dakota 7:07 pm CT
Sun/30 Minnesota Whitecaps @ Minnesota State (x) 2:07 pm CT	Sat/3 Bemidji State @ Ohio State 7:07 pm ET Minnesota @ Wisconsin 2:07 pm CT Minnesota State @ St. Cloud State 2:07 pm CT Minnesota Duluth @ North Dakota 2:07 pm CT	Fri/21 - Sun/23 No Games Scheduled	Sat/9 Wisconsin @ Minnesota Duluth 7:07 pm CT Ohio State @ Minnesota 7:07 pm CT Bemidji State @ Minnesota State 3:07 pm CT St. Cloud State @ North Dakota 4:07 pm CT
October	Sun/4 Minnesota Duluth @ North Dakota 2:07 pm CT	Sat/29 Vermont @ Bemidji State (nc) 2:07 pm CT Minnesota State @ Robert Morris (nc) 4:00 pm ET	Sat/15 Minnesota State @ Ohio State 7:07 pm ET Minnesota @ St. Cloud State 7:07 pm CT
Fri/5 Minnesota State @ Bemidji State 7:07 pm CT Minnesota Duluth @ St. Cloud State 7:07 pm CT Ohio State @ Connecticut (nc) 7:00 pm ET Robert Morris @ Wisconsin (nc) 7:07 pm CT Nike Bauer Women's Classic @ Ridder Arena, Minneapolis, MN Boston Univ. vs North Dakota (nc) 4:07 pm CT Northeastern vs Minnesota 7:07 pm CT	Fri/9 North Dakota @ St. Cloud State 7:07 pm CT Ohio State @ Minnesota State 7:07 pm CT Bemidji State @ Niagara (nc) 7:00 pm ET	Sun/30 Vermont @ Bemidji State (nc) 2:07 pm CT Minnesota State @ Robert Morris (nc) 1:00 pm ET	Sat/17 Bemidji State @ Wisconsin 2:07 pm CT
Sat/6 Minnesota State @ Bemidji State 2:07 pm CT Minnesota Duluth @ St. Cloud State 7:07 pm CT Ohio State @ Connecticut (nc) 4:00 pm ET Robert Morris @ Wisconsin (nc) 7:07 pm CT Nike Bauer Women's Classic @ Ridder Arena, Minneapolis, MN Northeastern vs North Dakota (nc) 4:07 pm CT Boston Univ. vs Minnesota (nc) 7:07 pm CT	Sat/10 Ohio State @ Minnesota State 3:07 pm CT North Dakota @ St. Cloud State 7:07 pm CT Bemidji State @ Niagara (nc) 2:00 pm ET	January	Fri/15 Minnesota State @ Ohio State 7:07 pm ET Minnesota @ St. Cloud State 7:07 pm CT
Fri/12 St. Cloud State @ Minnesota 6:07 pm CT Minnesota State @ Connecticut (nc) 7:00 pm ET North Dakota @ Rensselaer (nc) 7:00 pm ET	Fri/16 St. Cloud State @ Boston University (nc) 7:00 pm ET Providence @ Ohio State (nc) 7:07 pm ET Robert Morris @ Bemidji State (nc) 7:07 pm CT Niagara @ North Dakota (nc) 7:07 pm CT	Fri/4 North Dakota @ Ohio State 7:07 pm ET Bemidji State @ St. Cloud State 2:07 pm CT Wisconsin @ Minnesota State 7:07 pm CT	Sat/16 Bemidji State @ Wisconsin 2:07 pm CT Minnesota State @ Ohio State 4:07 pm ET St. Cloud State @ Minnesota 7:07 pm CT
Sat/13 Ohio State @ Wisconsin 2:07 pm CT Bemidji State @ Minnesota Duluth 3:37 pm CT Minnesota @ St. Cloud State 2:07 pm CT Minnesota State @ Connecticut (nc) 4:00 pm ET North Dakota @ Rensselaer (nc) 4:00 pm ET	Sat/17 Minnesota @ Minnesota Duluth 3:37 pm CT Wisconsin @ New Hampshire (nc) 5:00 pm ET Providence @ Ohio State (nc) 4:07 pm ET St. Cloud State @ Boston University (nc) 3:00 pm ET Robert Morris vs Bemidji State (nc) 6:07 pm CT @ Grand Rapids, Minn. Niagara @ North Dakota (nc) 7:07 pm CT	Sat/5 North Dakota @ Ohio State 4:07 pm ET Bemidji State @ St. Cloud State 2:07 pm CT Wisconsin @ Minnesota State 3:07 pm CT Minnesota @ Wayne State (nc) 1:00 pm ET	Sun/17 Bemidji State @ Wisconsin 2:07 pm CT
Sun/14 Ohio State @ Wisconsin 1:07 pm CT Bemidji State @ Minnesota Duluth 3:07 pm CT	Sun/18 Minnesota @ Minnesota Duluth 3:07 pm CT Wisconsin @ New Hampshire (nc) 3:00 pm ET	Sun/6 Minnesota @ Wayne State (nc) 1:00 pm ET	Fri/22 Ohio State @ Bemidji State 7:07 pm CT North Dakota @ Minnesota State 7:07 pm CT
Fri/19 Minnesota @ Ohio State 7:07 pm ET Bemidji State @ North Dakota 7:07 pm CT Wisconsin @ St. Cloud State 7:07 pm CT Univ. of Regina @ Minnesota State (x) 7:07 pm CT	Fri/23 St. Cloud State @ Ohio State 7:07 pm ET Wisconsin @ Bemidji State 7:07 pm CT Minnesota State @ Minnesota Duluth 7:07 pm CT	Fri/11 Ohio State @ St. Cloud State 7:07 pm CT Minnesota Duluth @ Minnesota State 7:07 pm CT North Dakota @ Bemidji State 7:07 pm CT	Sat/23 Ohio State @ Bemidji State 2:07 pm CT St. Cloud State @ Minnesota Duluth 3:37 pm CT Wisconsin @ Minnesota 3:07 pm CT North Dakota @ Minnesota State 3:07 pm CT
Sat/20 Minnesota @ Ohio State 7:07 pm ET Bemidji State @ North Dakota 4:07 pm CT Wisconsin @ St. Cloud State 7:07 pm CT Mercyhurst @ Minnesota Duluth (nc) 3:37 pm CT Univ. of Regina @ Minnesota State (x) 3:07 pm CT	Sat/24 St. Cloud State @ Ohio State 4:07 pm ET Wisconsin @ Bemidji State 2:07 pm CT Minnesota State @ Minnesota Duluth 7:07 pm CT North Dakota @ Minnesota 3:07 pm CT	Sat/12 Ohio State @ St. Cloud State 2:07 pm CT Minnesota Duluth @ Minnesota State 7:07 pm CT North Dakota @ Bemidji State 2:07 pm CT Boston College @ Minnesota (nc) 1:07 pm CT	Sun/24 Wisconsin @ Minnesota 3:07 pm CT St. Cloud State @ Minnesota Duluth 3:07 pm CT
Sun/21 Mercyhurst @ Minnesota Duluth (nc) 3:07 pm CT	Sun/25 North Dakota @ Minnesota 3:07 pm CT	Sun/13 Boston College @ Minnesota (nc) 1:07 pm CT	• end of regular season •
Fri/26 Minnesota State @ Wisconsin 2:07 pm CT Minnesota Duluth @ Minnesota 3:07 pm CT Ohio State @ North Dakota 7:07 pm CT St. Cloud State @ Robert Morris (nc) 4:05 pm ET	Fri/30 Minnesota Duluth @ Wisconsin 2:07 pm CT Bemidji State @ Minnesota 6:07 pm CT Minnesota State @ North Dakota 7:07 pm CT	Fri/18 Wisconsin @ Ohio State 7:07 pm ET Minnesota Duluth @ Bemidji State 7:07 pm CT Minnesota @ North Dakota 7:07 pm CT Vermont @ St. Cloud State (nc) 7:07 pm CT	Fri/29 - Sun/2 WCHA Playoffs • 1st Round • Best-of-3 TBA (#8 @ #1, #7 @ #2, #6 @ #3, #5 @ #4)
Sat/27 Minnesota State @ Wisconsin 4:07 pm CT Minnesota Duluth @ Minnesota 6:07 pm CT Ohio State @ North Dakota 4:07 pm CT St. Cloud State @ Robert Morris (nc) 4:05 pm ET	December	Sat/19 Minnesota Duluth @ Bemidji State 2:07 pm CT Wisconsin @ Ohio State 4:07 pm ET Minnesota @ North Dakota 4:07 pm CT Vermont @ St. Cloud State (nc) 7:07 pm CT	March
Sun/28 Minnesota State @ Wisconsin 2:07 pm CT Minnesota Duluth @ Minnesota 3:07 pm CT Minnesota State @ North Dakota 2:07 pm CT	Fri/7 Minnesota @ Minnesota State 7:07 pm CT	Fri/25 North Dakota @ Minnesota Duluth 7:07 pm CT Minnesota State @ Minnesota 7:07 pm CT Ohio State @ Niagara (nc) 7:00 pm ET	Sat/8 2008 WCHA Playoff Championship @ DECC, Duluth, MN Semi-Final #1 1:07 pm CT Semi-Final #2 4:07 pm CT
Fri/28 Wisconsin @ Union College (nc) 7:00 pm ET Univ. of Manitoba @ Bemidji State (x) 7:07 pm CT	Sat/1 Minnesota Duluth @ Wisconsin 2:07 pm CT Bemidji State @ Minnesota 3:07 pm CT Minnesota State @ North Dakota 2:07 pm CT	Sat/26 St. Cloud State @ Wisconsin 2:07 pm CT North Dakota @ Minnesota Duluth 7:07 pm CT Minnesota State @ Minnesota 7:07 pm CT Ohio State @ Niagara (nc) 2:00 pm ET	Sun/9 2008 WCHA Playoff Championship @ DECC, Duluth, MN Championship Game 1:07 pm CT
Sat/29 Wisconsin @ Union College (nc) 7:00 pm ET Wilfrid Laurier Univ. @ Ohio State (x) 1:07 pm ET Balmoral Hall School @ St. Cloud State (x) 2:07 pm CT Univ. of Manitoba @ North Dakota (x) 7:07 pm CT	Fri/7 Minnesota @ Minnesota State 7:07 pm CT	Sun/27 St. Cloud State @ Wisconsin 2:07 pm CT	Fri/14 - Sun/16 NCAA Regionals TBA
Sun/30 Minnesota Whitecaps @ Minnesota State (x) 2:07 pm CT	Sat/8 St. Cloud State @ Bemidji State 2:07 pm CT Ohio State @ Minnesota Duluth 3:37 pm CT Minnesota @ Minnesota State 3:07 pm CT Wisconsin @ North Dakota 2:07 pm CT	February	Thu/20 2008 NCAA Women's Frozen Four @ DECC, Duluth, MN Semi-Final #1 TBA pm CT Semi-Final #2 TBA pm CT
Fri/5 Minnesota State @ Bemidji State 7:07 pm CT Minnesota Duluth @ St. Cloud State 7:07 pm CT Ohio State @ Connecticut (nc) 7:00 pm ET Robert Morris @ Wisconsin (nc) 7:07 pm CT Nike Bauer Women's Classic @ Ridder Arena, Minneapolis, MN Boston Univ. vs North Dakota (nc) 4:07 pm CT Northeastern vs Minnesota 7:07 pm CT	Sun/9 St. Cloud State @ Bemidji State 2:07 pm CT Wisconsin @ North Dakota 2:07 pm CT Ohio State @ Minnesota Duluth 3:07 pm CT	Fri/1 Minnesota Duluth @ Ohio State 7:07 pm ET Minnesota @ Bemidji State 2:07 pm CT Minnesota State @ St. Cloud State 7:07 pm CT	Sat/22 2008 NCAA Women's Frozen Four @ DECC, Duluth, MN National Championship Game TBA pm CT
Sat/6 Minnesota State @ Bemidji State 2:07 pm CT Minnesota Duluth @ St. Cloud State 7:07 pm CT Ohio State @ Connecticut (nc) 4:00 pm ET Robert Morris @ Wisconsin (nc) 7:07 pm CT Nike Bauer Women's Classic @ Ridder Arena, Minneapolis, MN Northeastern vs North Dakota (nc) 4:07 pm CT Boston Univ. vs Minnesota (nc) 7:07 pm CT	Sat/1 Minnesota Duluth @ Wisconsin 2:07 pm CT Bemidji State @ Minnesota 3:07 pm CT Minnesota State @ North Dakota 2:07 pm CT	Sat/2 Minnesota @ Bemidji State 2:07 pm CT Minnesota Duluth @ Ohio State 4:07 pm ET North Dakota @ Wisconsin 2:07 pm CT	Schedule Key All Association-member home games faceoff at either :07 or :37 after the hour; (nc) non-conference; (x) exhibition; tournaments/special events in BOLD